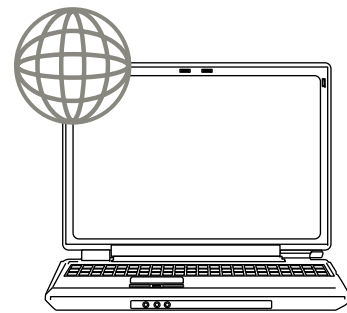




## Image Scanner SP-1130Ne / Scanneur d'image SP-1130Ne Getting Started / Instructions préliminaires

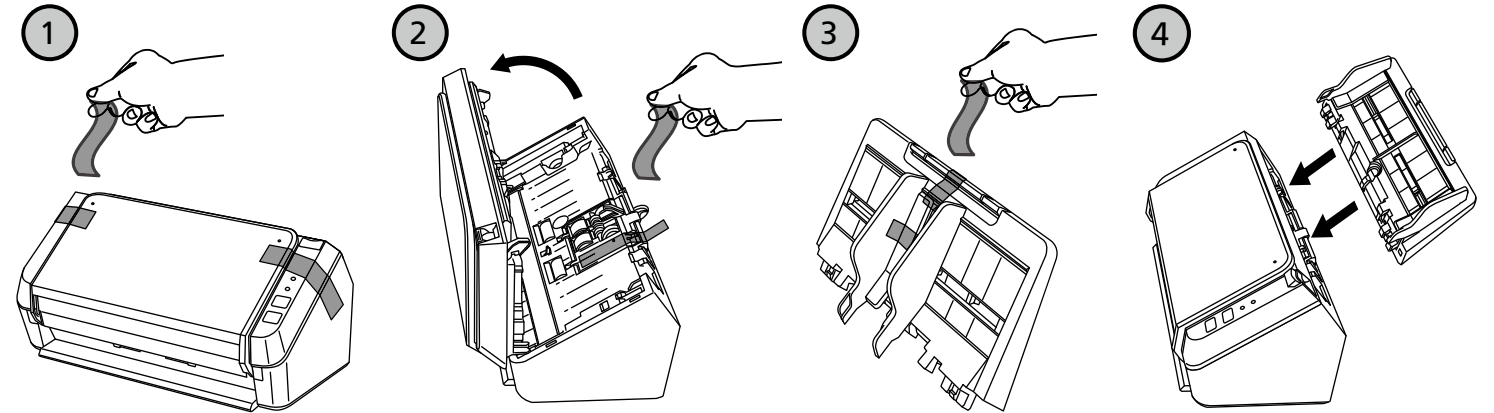
### Software and Manuals Logiciels et guides



<http://sp-ne.com/d/>

To install the software, download the installer from the website above.  
Pour installer le logiciel, téléchargez le programme d'installation à partir du site Web ci-dessus.

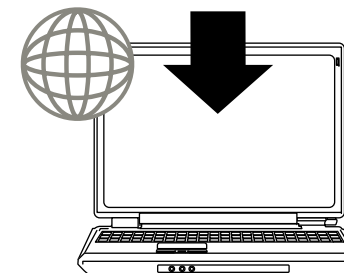
## 1 Remove tape / Retirez le ruban



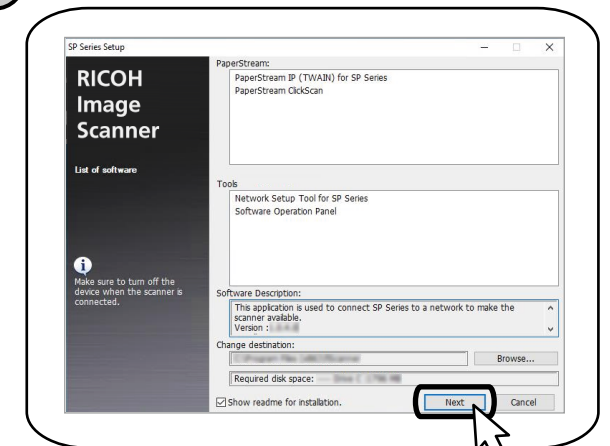
## 2 Install software and start the setup Installez le logiciel et lancez l'installation

### 1 <http://sp-ne.com/d/>

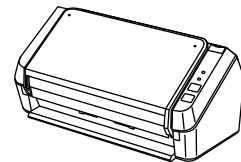
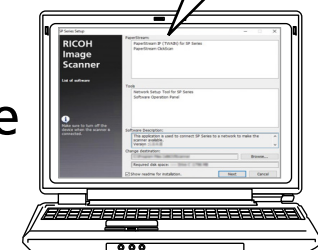
Download the installer.  
Téléchargez le programme d'installation.



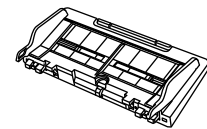
### 3



### 2 Double-click the installer Double-cliquez sur le programme d'installation



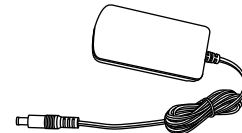
Scanner (x1)  
Scanneur (x1)



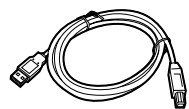
ADF paper chute (feeder) (x1)  
Plateau d'alimentation de l'AAD (chargeur) (x1)



Plugs (\*)  
Prises (\*)



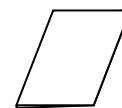
AC adapter (x1)  
Adaptateur CA (x1)



USB cable (x1)  
Câble USB (x1)



Safety Precautions (x1)  
Consignes de sécurité (x1)

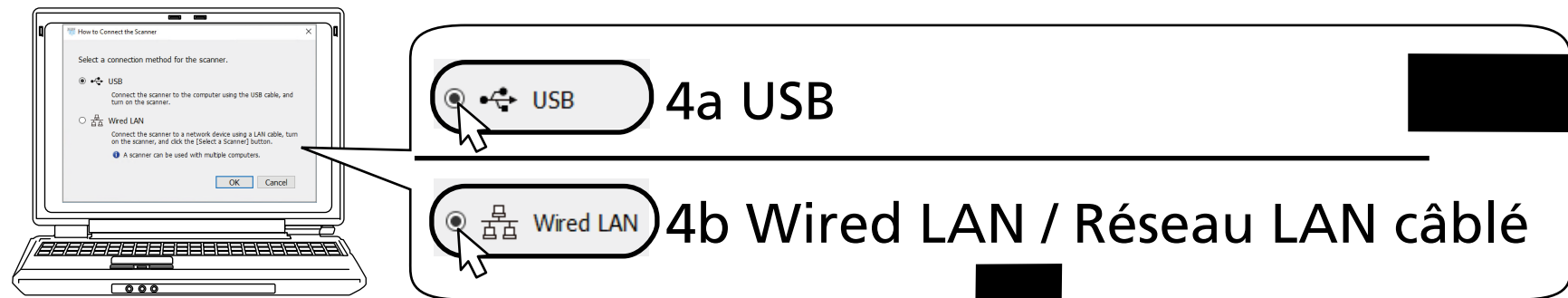


Getting Started (This sheet) (x1)  
Instructions préliminaires (Cette page) (x1)

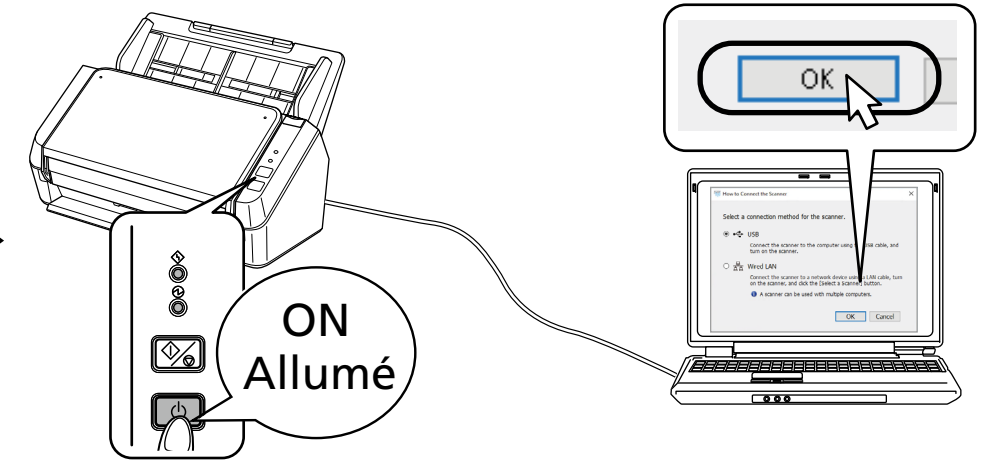
(\*) Two or three plugs are enclosed with each package. Use the one that fits the AC outlet in your region.  
Deux ou trois prises différentes sont fournies dans chaque emballage. Utilisez celle qui correspond à votre région.

Keep the contents, box, and packaging materials in a safe place and do not discard them.  
Ne jetez pas le contenu, le carton et les matériaux d'emballage, conservez-les dans un endroit sûr.

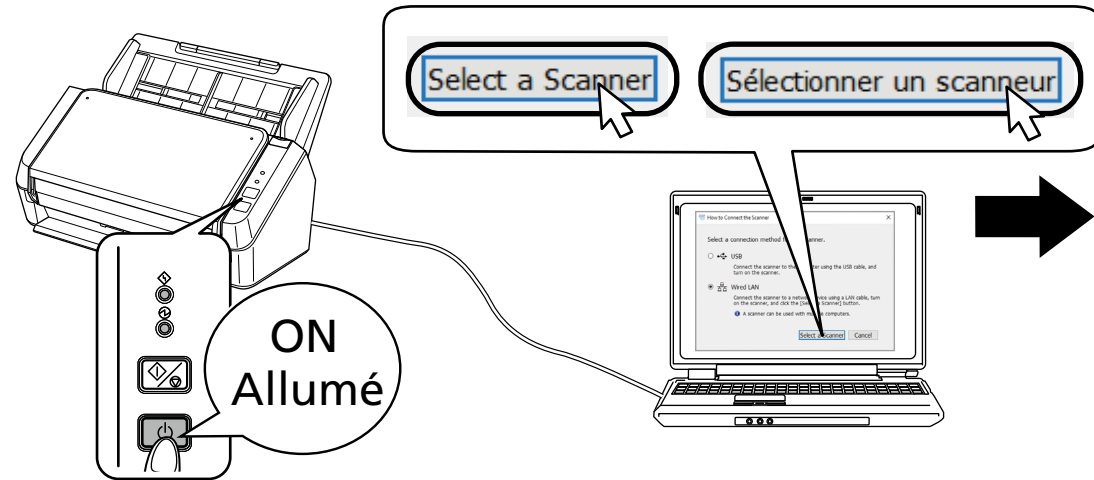
### 3 Select a connection method and connect your scanner Sélectionnez une méthode de connexion et branchez votre scanner



### 4a USB



### 4b Wired LAN / Réseau LAN câblé



**DHCP**  
Obtain automatically (Default).  
Obtenir automatiquement (Défaut).

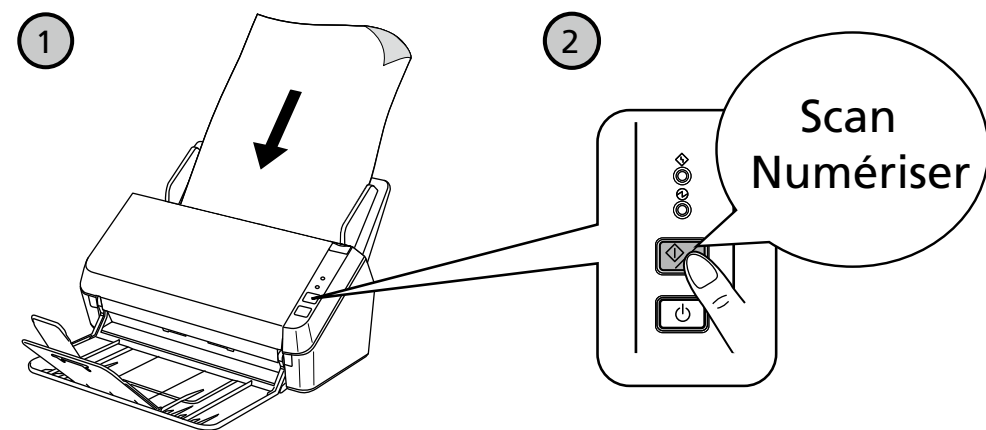
1 Select your scanner. / Sélectionnez votre scanner.

Model Name	Scanner Name	IP Address
✓ SP-		

2 OK Cancel OK Annuler

**DHCP**  
Set an IP Address / Configurer une adresse IP  
Configure manually.  
Configurer manuellement.

### 5 Scan / Numériser



### Need help? / Besoin d'aide ?

Refer to the contact list on the following web page:  
<https://www.pfu.ricoh.com/r/ctl/>

Consultez la liste des contacts sur la page Internet suivante:  
<https://www.pfu.ricoh.com/r/ctl/>

The full text of the FCC of conformity is available at the following internet address:  
<https://www.pfu.ricoh.com/global/scanners/sps/support/certificates/>  
Le texte complet de la FCC de conformité est disponible à l'adresse internet suivante:  
<https://www.pfu.ricoh.com/global/scanners/sps/support/certificates/>