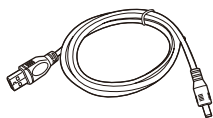
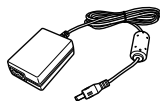
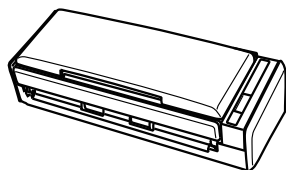
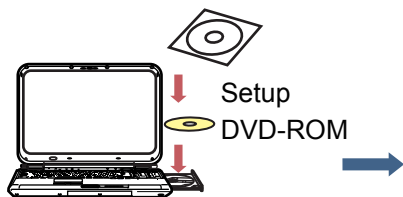
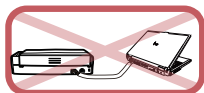


1



Setup DVD-ROM

2

Setup
DVD-ROM

Windows®



Mac OS

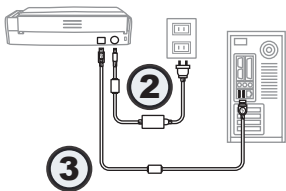
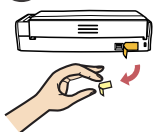


连接 ScanSnap 到您的电脑前，请安装需要的软件。
如电脑上没有 DVD-ROM 驱动器，请访问我公司的 Download Request page
(下载申请页面)。
Be sure to install the required software before connecting ScanSnap to your
computer.
If your computer has no DVD-ROM drive, visit our download request page.
Download Request page.....
<https://www.pfu.fujitsu.com/registration/ss-setpg/en/no-check01.html>

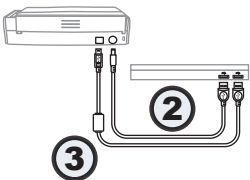


3

①



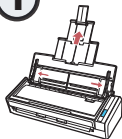
使用电源电缆。
Using the Power Cable.



使用 USB 总线电源电缆。
Using the USB Bus Power Cable.

4

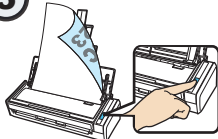
①



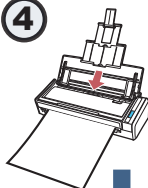
②



③



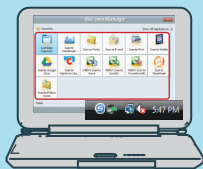
④



⑤

Windows®

Mac OS

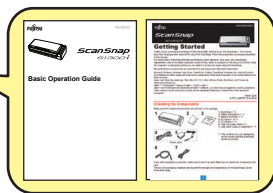


更多信息请参阅各种指南或 ScanSnap 支持网站。

For further information, refer to the manuals or ScanSnap Support Site.



Setup
DVD-ROM



简体中文 <http://scansnap.fujitsu.com/g-support/zh/>

English <http://scansnap.fujitsu.com/g-support/en/>