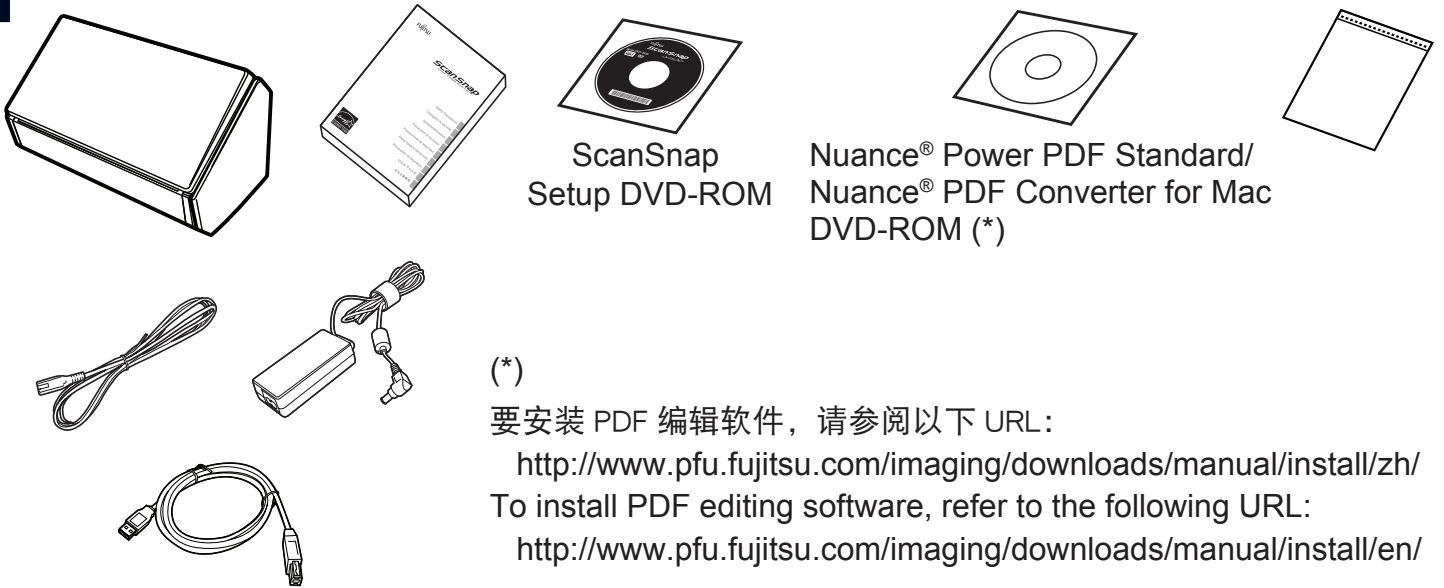


ScanSnap iX500

1



(*)

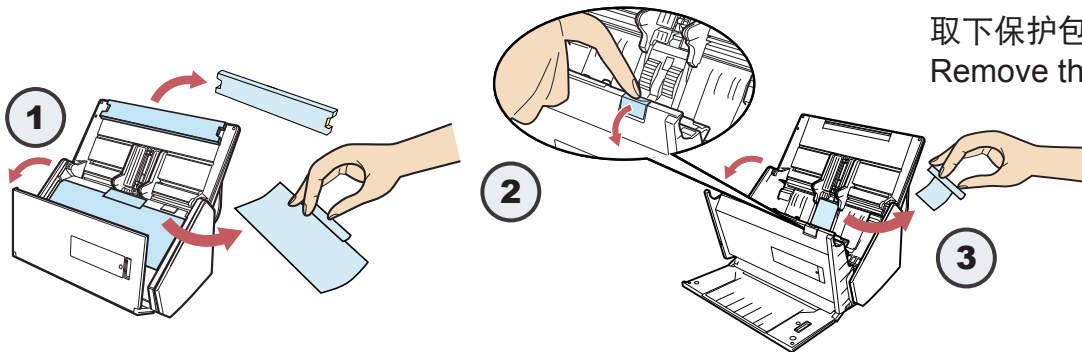
要安装 PDF 编辑软件，请参阅以下 URL：

<http://www.pfu.fujitsu.com/imaging/downloads/manual/install/zh/>

To install PDF editing software, refer to the following URL:

<http://www.pfu.fujitsu.com/imaging/downloads/manual/install/en/>

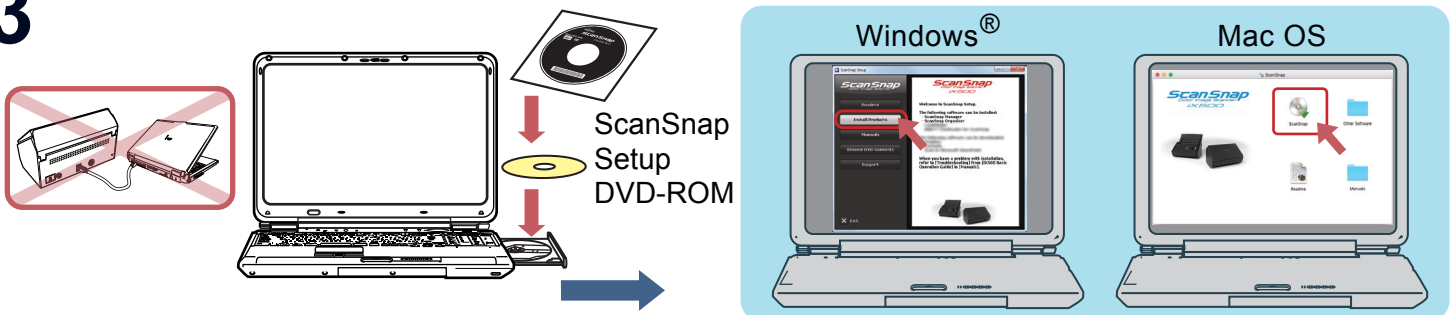
2



取下保护包装。

Remove the protective packaging.

3



连接 ScanSnap 到您的电脑前，请安装需要的软件。

如电脑上没有 DVD-ROM 驱动器，请访问我公司的 Download Request page（下载申请页面）。

Be sure to install the required software before connecting ScanSnap to your computer.

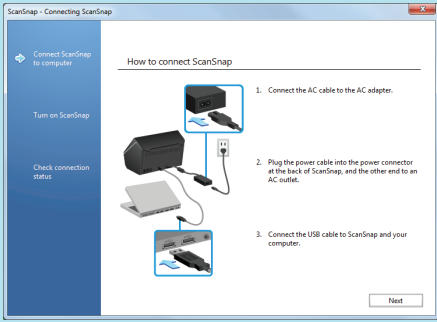
If your computer has no DVD-ROM drive, visit our download request page.

Download Request page.....

<https://www.pfu.fujitsu.com/registration/ss-setpg/en/no-check01.html>

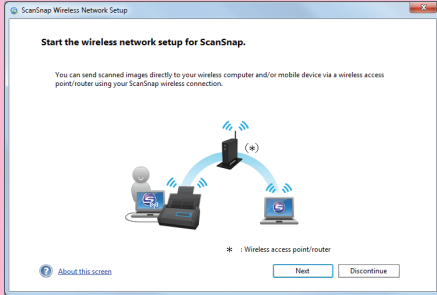


4



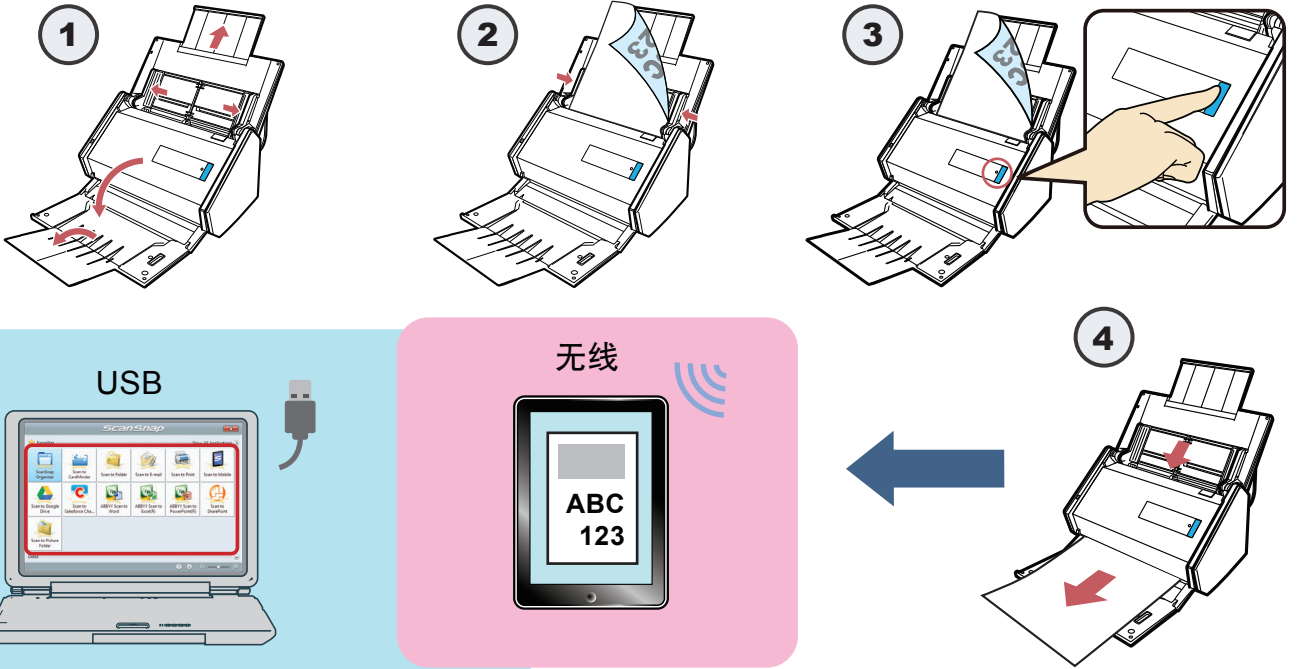
请将 ScanSnap 连到电脑。
Connect ScanSnap to your computer.

5



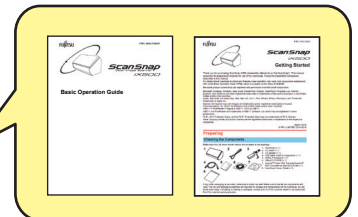
若要无线扫描，请跟随屏幕上的指示操作。
If you need to scan wirelessly, follow the instructions on the screen.

6



更多信息请参阅各种指南或 ScanSnap 支持网站。
For further information, refer to the manuals or ScanSnap Support Site.

ScanSnap
SetupDVD-ROM



简体中文
English

<http://scansnap.fujitsu.com/g-support/zh/>
<http://scansnap.fujitsu.com/g-support/en/>