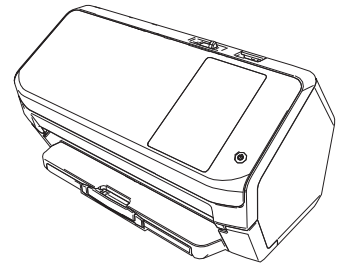


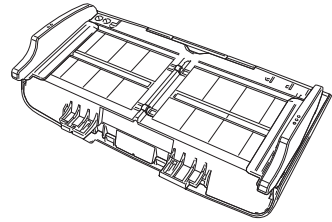


Image Scanner/Scanneur d'image fi-7300NX Getting Started/Instructions préliminaires

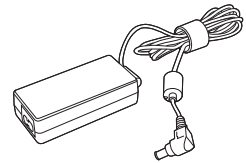
1



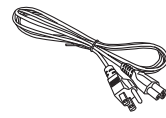
Scanner
Scanneur



ADF paper chute
(feeder)
Plateau d'alimentation de l'AAD
(chargeur)



AC adapter
Adaptateur CA



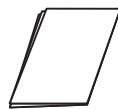
AC cable
Câble CA



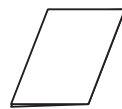
USB cable
Câble USB



Setup DVD-ROM
DVD-ROM d'installation



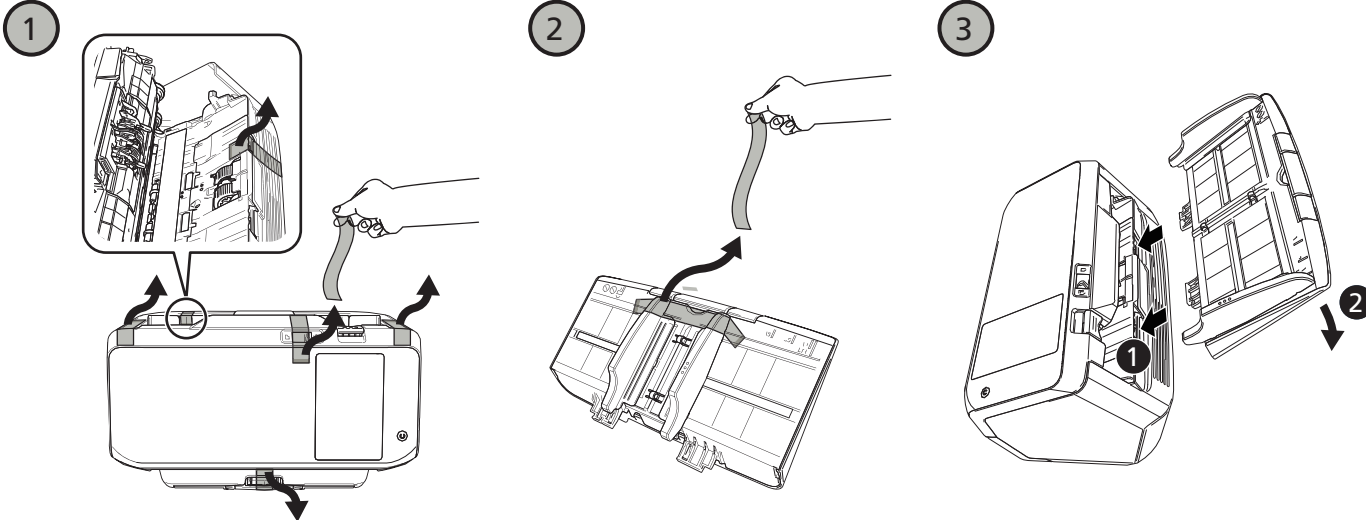
Safety Precautions
Consignes de sécurité



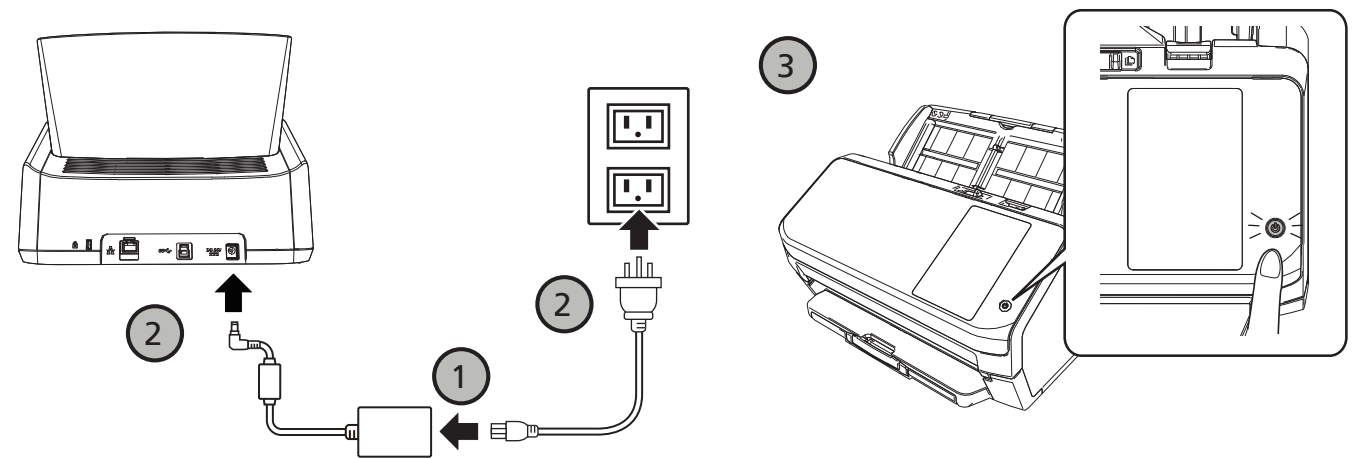
Getting Started
(This sheet)
Instructions préliminaires
(Cette page)

The contents may vary depending on the country and the model purchased.
Le contenu risque de différer selon le pays d'achat et le modèle.
Je nach Land und Modell können sich die Inhalte unterscheiden.
I contenuti possono variare a seconda del Paese e del modello acquistato.
Los contenidos pueden diferir de acuerdo al modelo y al país donde adquirió.
Содержимое может изменяться в зависимости от страны и выбранной модели сканера.
O conteúdo pode variar dependendo do país e do modelo adquirido.
Isi dapat bervariasi tergantung pada negara dan model yang dibeli.

2



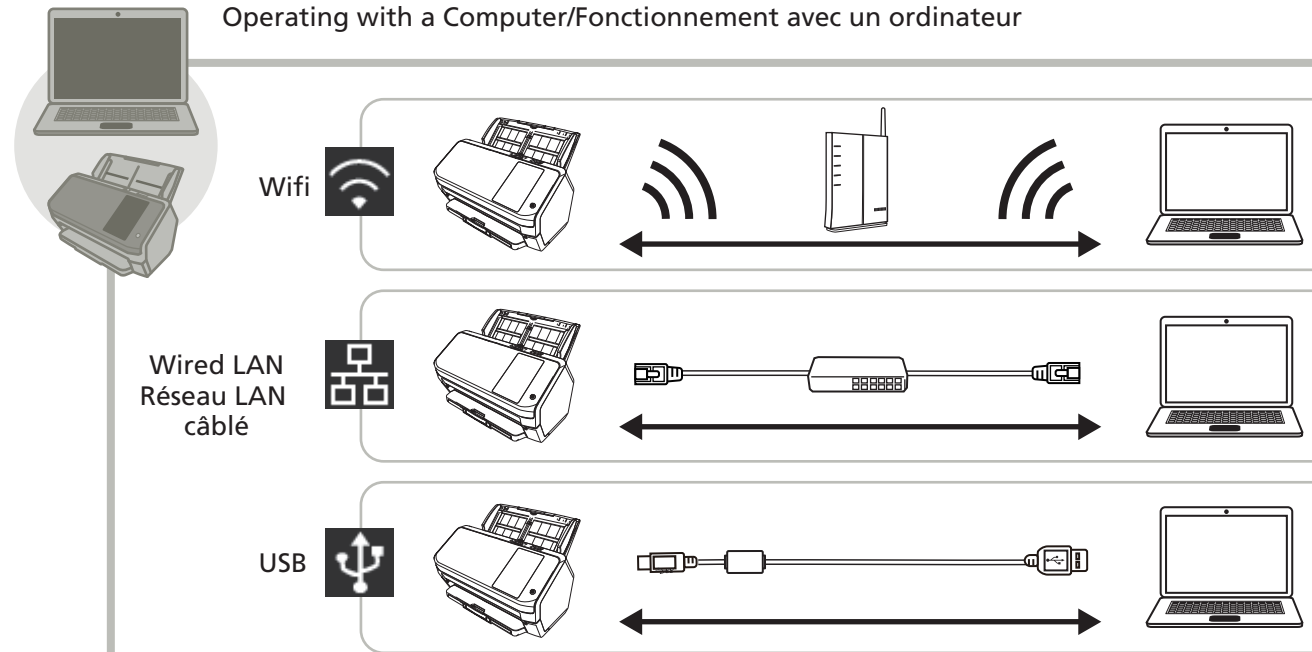
3



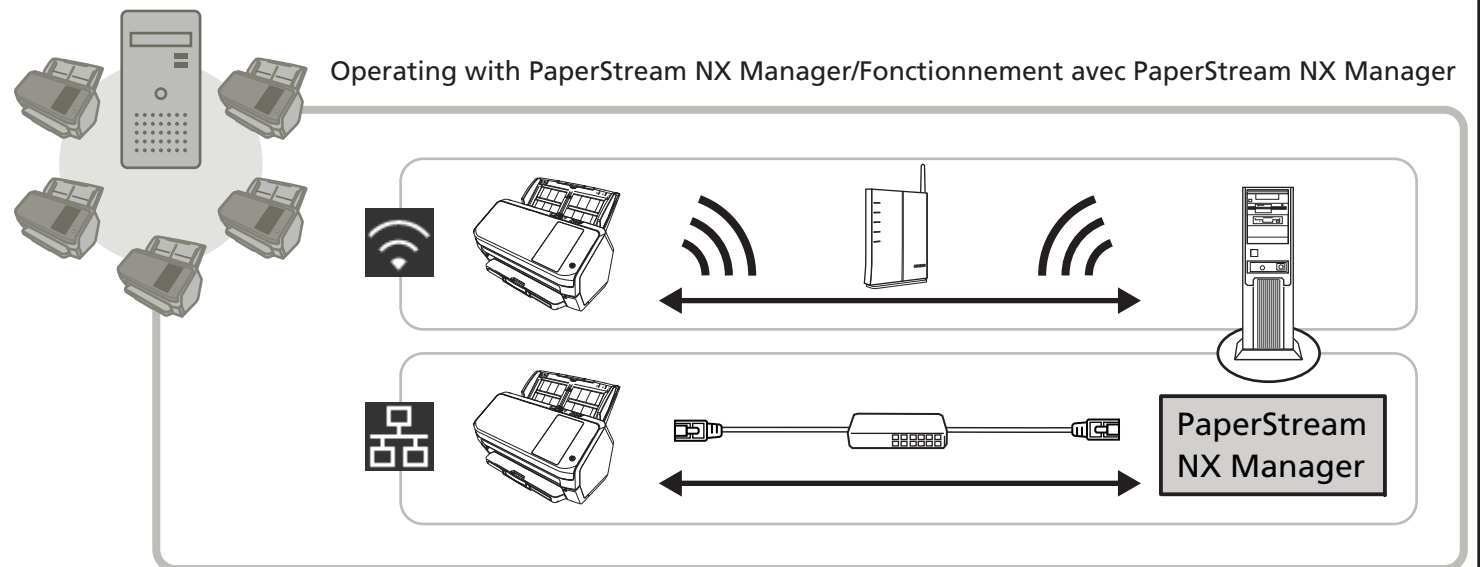
4

Check the operation and connection methods./Vérifiez le fonctionnement et les méthodes de connexion.

Operating with a Computer/Fonctionnement avec un ordinateur

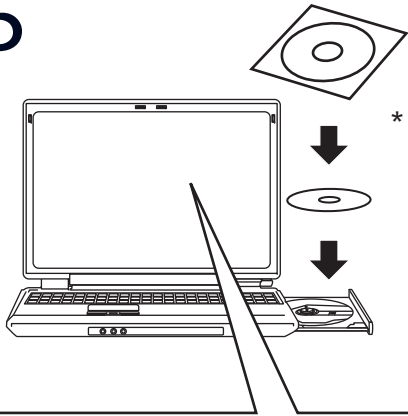


Operating with PaperStream NX Manager/Fonctionnement avec PaperStream NX Manager



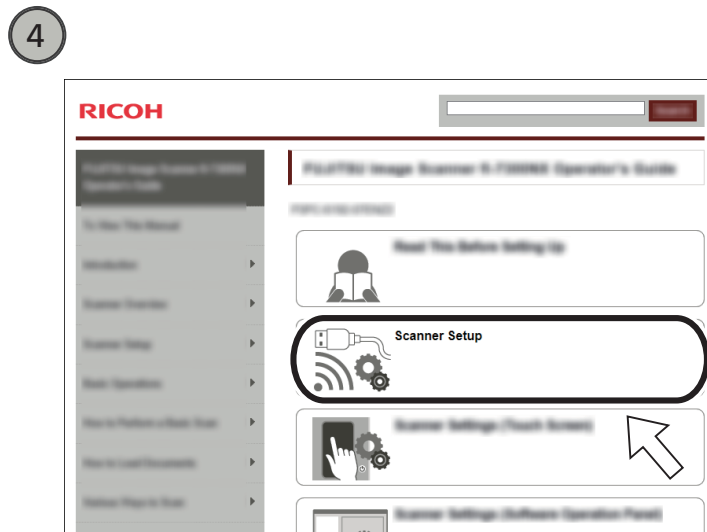
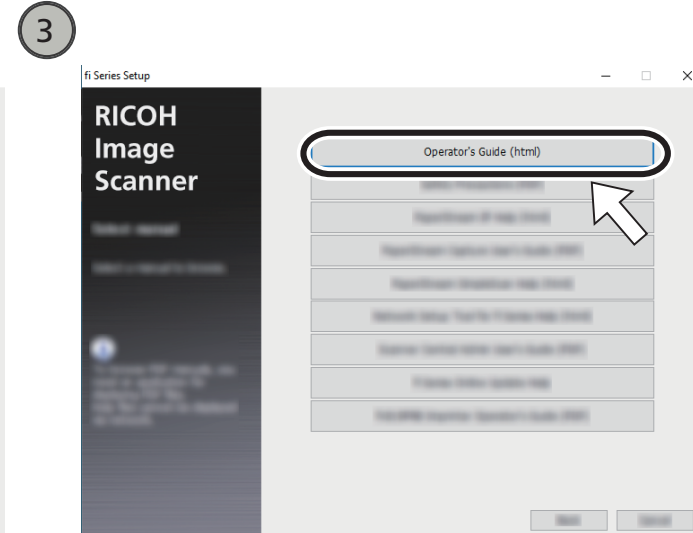
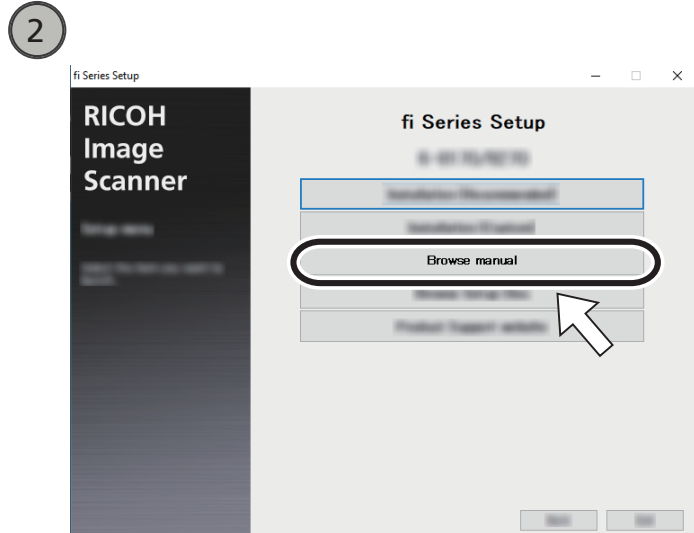
5

Setup DVD-ROM (*)
DVD-ROM d'installation (*)



* Please keep this disc safe as it will not be reissued.
 Conservez ce disque dans un endroit sûr car ce sera votre seul unique exemplaire.
 Bitte bewahren Sie diese Disk sicher auf, da keine Neuauflage erhältlich sein wird.
 Non danneggiare il disco perché non verrà ridistribuito.
 Mantenga seguro este disco, ya que no se emitirá de nuevo.
 Так как диск не будет переиздан, пожалуйста, бережно храните да нный диск.
 Mantenha o disco em um local seguro. A segunda via do disco não pode ser emitida.
 Silakan simpan disk ini dengan aman karena tidak akan diterbitkan ulang.

- 1 Click the scanner model name to be used (if the window for selecting a model name is displayed).
 Cliquez sur le nom du modèle de scanneur à utiliser (si la fenêtre de sélection d'un nom de modèle s'affiche).
 Klicken Sie auf den Namen des verwendeten Scannermodells (wenn das Fenster zur Auswahl des Modellnamens angezeigt wird).
 Cliccare il nome del modello di scanner da utilizzare (se è visualizzata la finestra per la selezione di un nome del modello).
 Haga clic en el nombre de modelo del escáner que se va a utilizar (si se muestra la ventana para seleccionar un nombre de modelo).
 Нажмите имя модели сканера для использования (если отображается окно выбора названия модели).
 Clique no nome do modelo do scanner a ser usado (se a janela para seleção de um nome do modelo for exibido).
 Klik nama model pemindai yang akan digunakan (jika jendela untuk memilih nama model ditampilkan).



Refer to "Scanner Setup" in the Operator's Guide.
 Reportez-vous à la rubrique "Configuration du scanneur" du Guide d'utilisation.
 Siehe "Scanner-Setup" im Bedienungshandbuch.
 Consultare "Installazione dello scanner" nella Guida dell'operatore.
 Consulte "Instalación del escáner" en la Guía del usuario.
 Смотрите "Настройка сканера" в Руководстве по эксплуатации.
 Consulte "Configuração do scanner" no Manual de instruções.
 Rujuk "Penyiapan Pemindai" dalam Panduan Pengguna.

6

IMPORTANT NOTICE
 AVIS IMPORTANT
 WICHTIGER HINWEIS
 INFORMAZIONI IMPORTANTI
 AVISO IMPORTANTE
 ВАЖНОЕ ПРИМЕЧАНИЕ
 AVISO IMPORTANTE
 PENGUMUMAN PENTING
<https://www.pfu.ricoh.com/global/scanners/flyer/fi/>



The full text of the FCC of conformity is available at the following internet address:
<https://www.pfu.ricoh.com/fi/r/cert/>
 Le texte complet de la FCC de conformité est disponible à l'adresse internet suivante:
<https://www.pfu.ricoh.com/fi/r/cert/>