

PaperStream NX Manager 1.5

PaperStream NX Manager Web Scan

Operation Guide for the Authentication Function

Contents

1. Introduction.....	3
2. Setting the Authentication Function in the installer.....	4
2.1 Running the installer.....	4
2.2 Installation order by feature of the installer.....	4
2.3 Installing PaperStream NX Manager	4
3. Adding authenticated users to the authentication group.....	6
3.1 Adding authenticated users to the authentication group.....	6
3.2 Adding authenticated users to the authentication group from the Command Prompt.....	12
4. Creating an authenticated user	13
4.1 Creating an authenticated user	13
4.2 Creating an authenticated user from the Command Prompt	15
5. PaperStream NX Manager Web Scan Authentication	16

1. Introduction

This document provides instructions to use the authentication function in PaperStream NX Manager Web Scan. Only local user of the Windows Server on which NX Manager is installed can use the authentication function.

The general flow is as follows:

- (1) Enable the authentication function in the installer.
- (2) Add users used for authentication to an authentication group *.
- (3) Log in to Web Scan

* If you prepare a new user for authentication, create the user before step 2.

2. Setting the Authentication Function in the installer

The authentication function in The PaperStream NX Manager Web Scan must be enabled when the PaperStream NX Manager is installed. The instruction is as follows.

2.1 Running the installer

Run the NX Manager installer in any folder.

Installer : NxManager151.exe

2.2 Installation order by feature of the installer

For a new installation, the installer installs each function in the following order:

1. PaperStreamIP
2. PaperStream NX Manager Database
3. PaperStream NX Manager

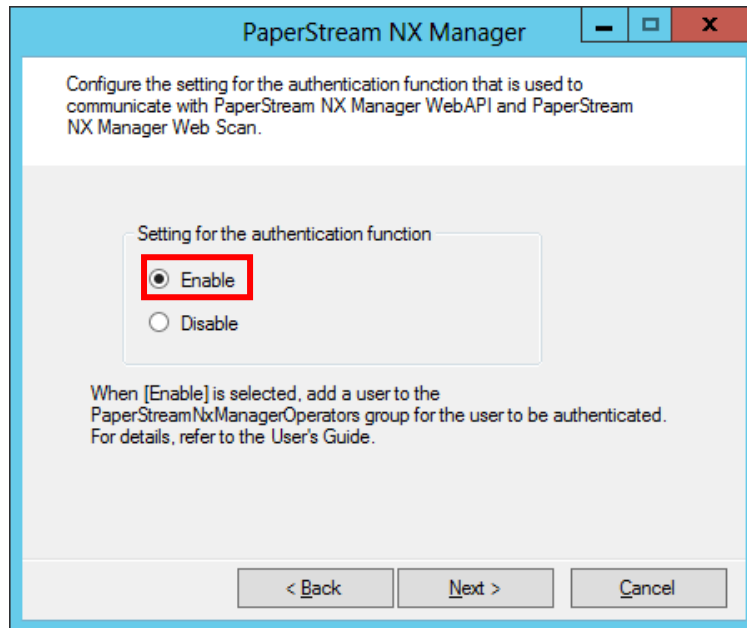
The authentication function in PaperStream NX Manager Web Scan is configured in step 3. For detail, please view "2.3 Installing PaperStream NX Manager" below.

2.3 Installing PaperStream NX Manager

The following screens appear while installing the PaperStream NX Manager. Select whether to use the authentication function in PaperStream NX Manager Web Scan in "6. Configure the setting for the authentication function". Other screen settings have no effect on the authentication function, so set them according to your environment.

1. Welcome screen
2. License Agreement
3. SQL Server settings
4. Configure the settings to communicate with the scanner
5. Configure the settings to communicate with the browser
6. Configure the setting for the authentication function
7. Configure the settings to communicate with PaperStream NX Manager WebAPI
8. Configure the settings to communicate with PaperStream NX Manager Web Scan
9. Install PaperStream NX Manager

To use the authentication function, select "Enable" as shown below and click the [Next] button in "6. Configure the setting for the authentication function".



3. Adding authenticated users to the authentication group

Authenticated users must be added to the authentication group "PaperStreamNxManagerOperators". The group "PaperStreamNxManagerOperators" is made when PaperStream NX Manager is installed. The instruction to add authenticated users is as follows.

3.1 Adding authenticated users to the authentication group

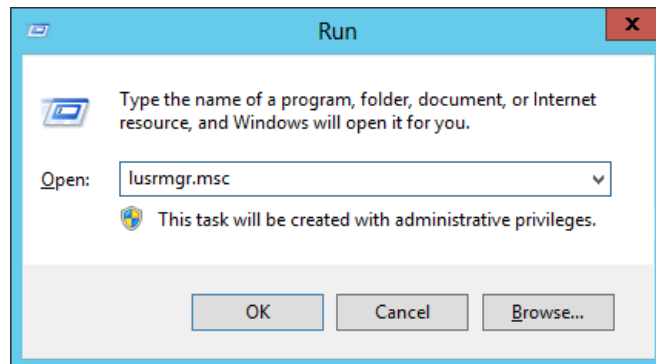
- (1) Open the "Local Users and Groups" window.

Run the `lusrmgr.msc` command to open the "Local Users and Groups" screen.

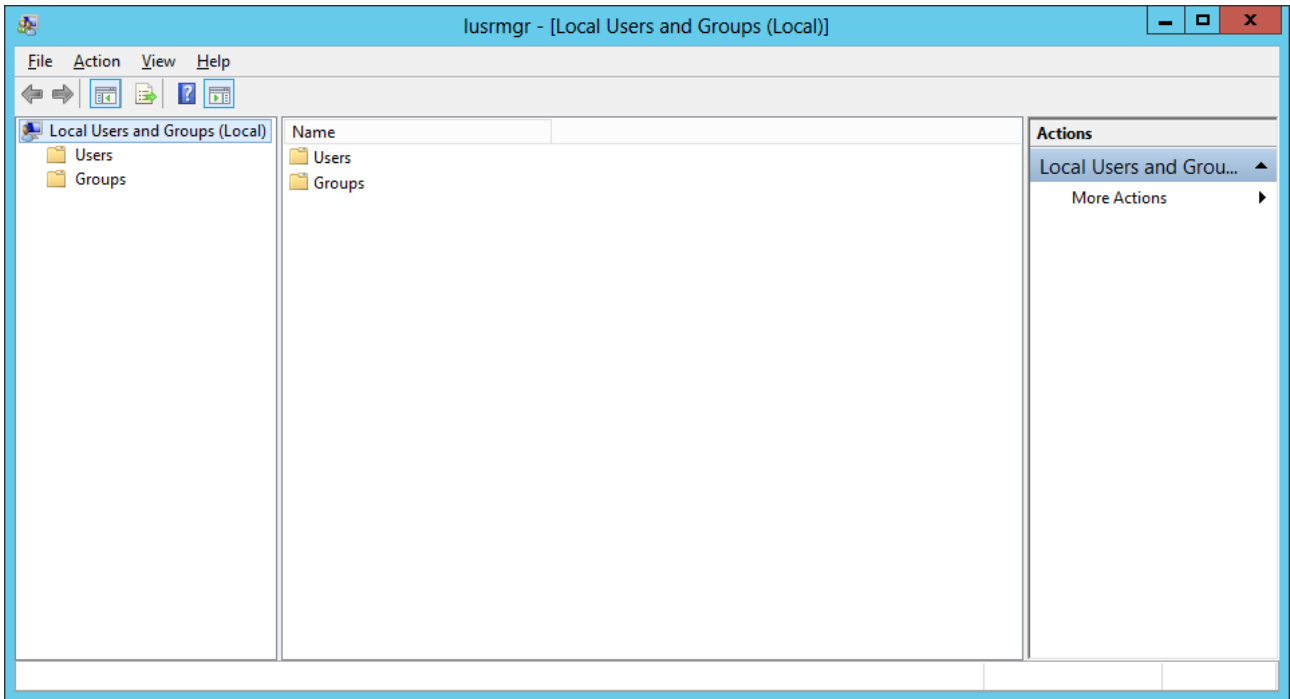
The instruction to run the command is as follows.

1. Press the Windows key and the R key simultaneously, or right-click the Start button and select "Run" to display the following screen.
2. Enter "`lusrmgr.msc`" in "Open" and click the [OK] button, the "Local Users and Groups" screen is displayed.

Note) If the "Local Users and Groups" screen does not work, refer to section ["3.2 Adding authenticated users to the authentication group from the Command Prompt"](#) (page 12) to add an authenticated user to the authentication group.



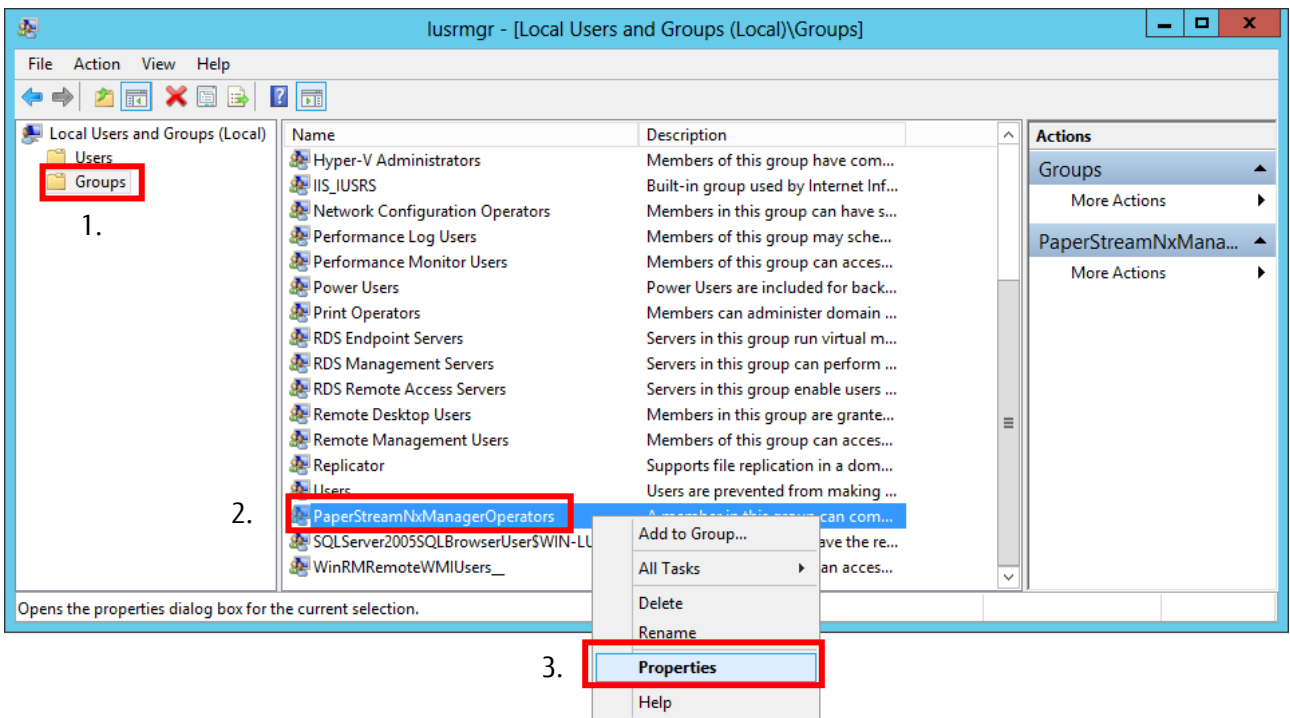
The "Local Users and Groups" screen will appear as the following.



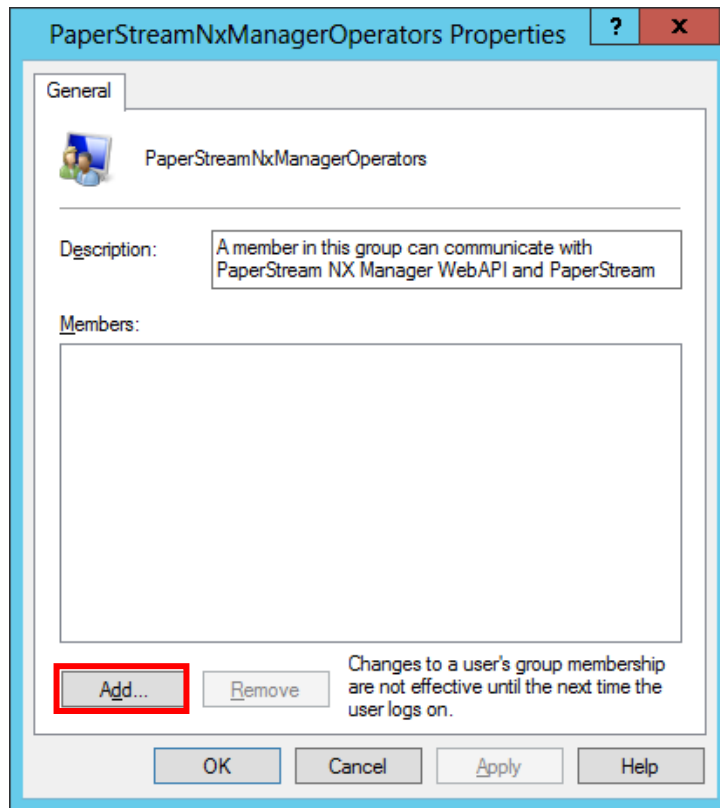
(2) Display the PaperStreamNxManagerOperators properties.

The instruction to open the PaperStreamNxManagerOperators properties is as follows.

1. Click the Groups folder to display the group list
2. Right-click "PaperStreamNxManagerOperators" group to display context menu
3. Select "Properties" in the context menu



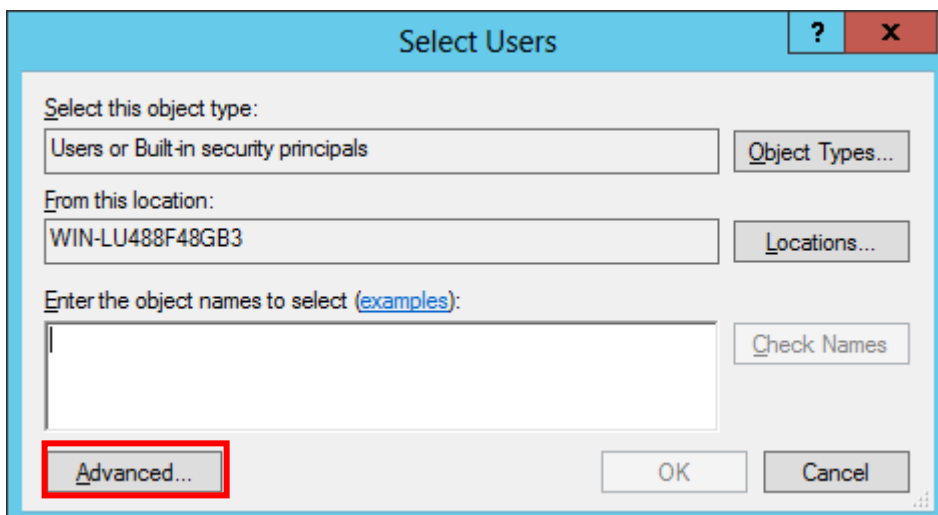
When the following properties screen appears, click the [Add] button to display the "Select Users" screen.



(3) Select users on the "Select Users" screen.

To create a new local user that you want to add to the authentication group, refer to section ["4. Creating an authenticated user"](#) (page 12) and create the user first.

When you click the [Add] button in the PaperStreamNxManagerOperators property screen, the following "Select Users" screen is displayed. Click the [Advanced...] button.



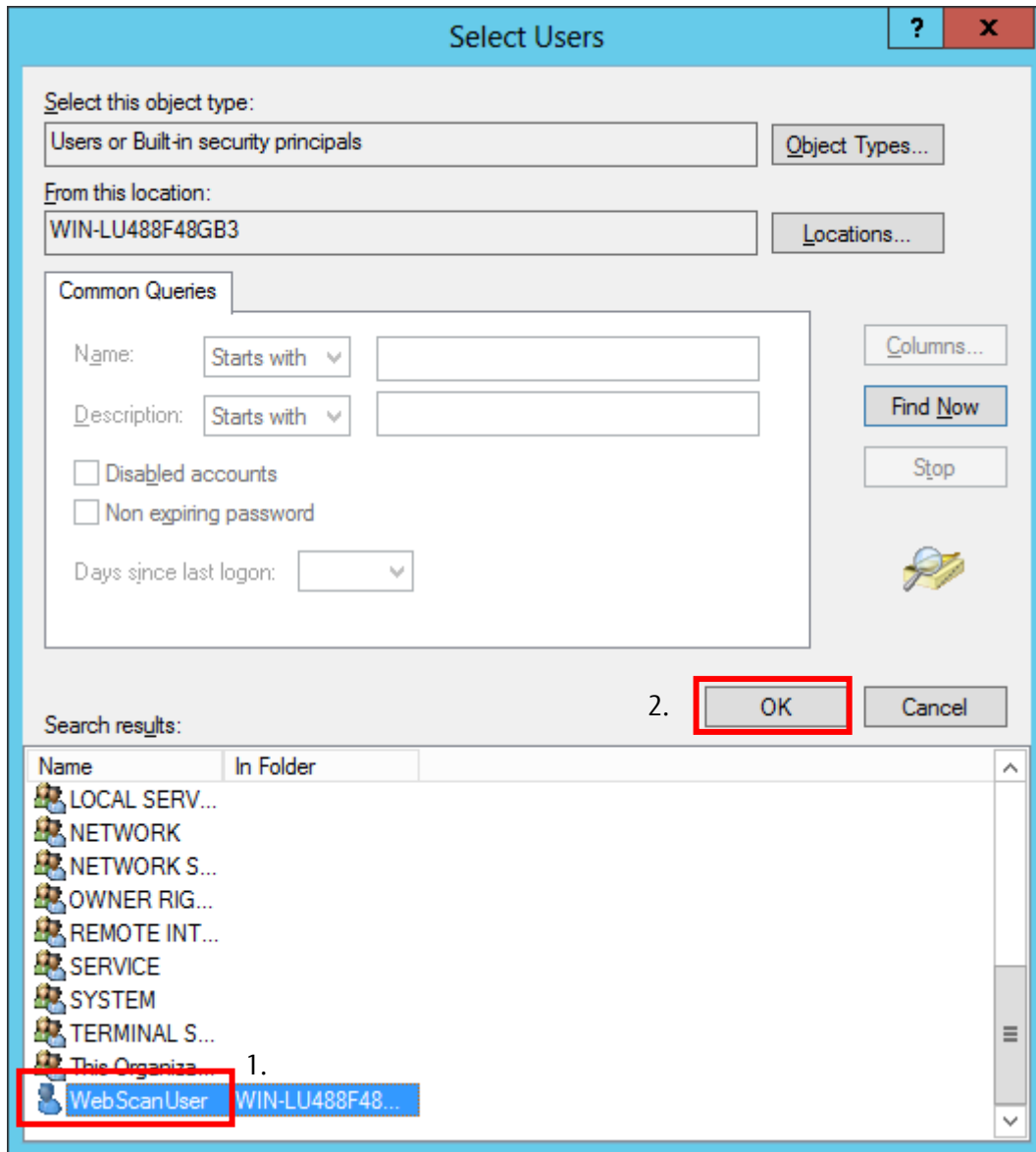
The following screen will appear. Click the [Find Now] button.

The screenshot shows a dialog box titled "Select Users" with a blue header bar containing a question mark and a close button (X). The dialog is divided into several sections:

- Select this object type:** A text box containing "Users or Built-in security principals" and a button labeled "Object Types...".
- From this location:** A text box containing "WIN-LU488F48GB3" and a button labeled "Locations...".
- Common Queries:** A section with search filters:
 - Name: "Starts with" dropdown and an empty text box.
 - Description: "Starts with" dropdown and an empty text box.
 - Checkboxes for "Disabled accounts" and "Non expiring password", both currently unchecked.
 - Days since last logon: A dropdown menu.
- Buttons:** On the right side, there are buttons for "Columns...", "Find Now" (highlighted with a red rectangle), and "Stop". Below these is a magnifying glass icon.
- Search results:** At the bottom, there are "OK" and "Cancel" buttons above a table with two columns: "Name" and "In Folder". The table is currently empty.

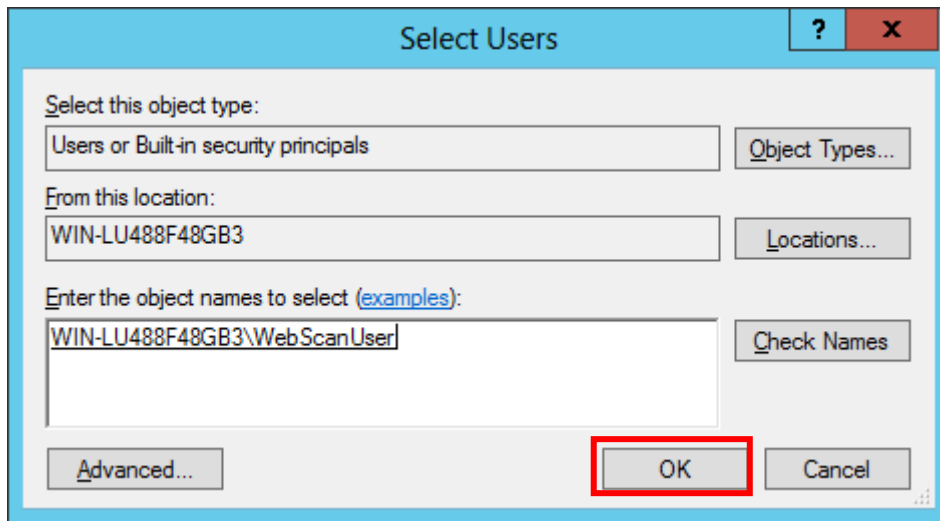
A list of users appears as the following.

1. Select the user to use for authentication.
2. Click the [OK] button.

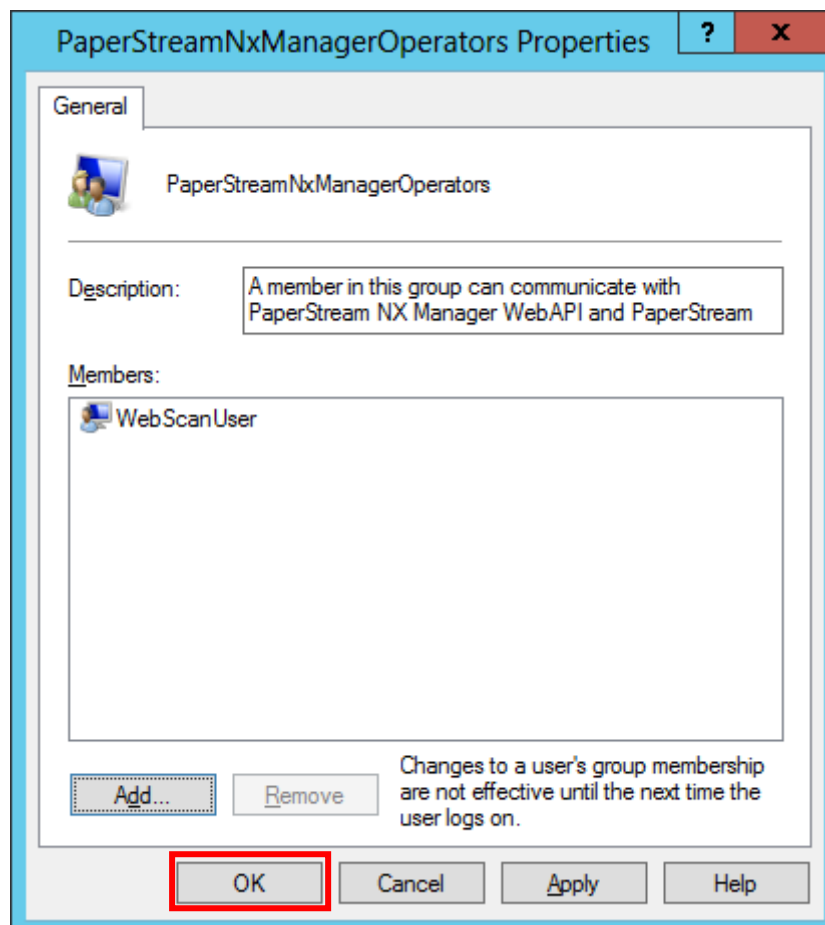


The selected user appears as the following.

Click the [OK] button to return to the PaperStreamNxManagerOperators properties screen.

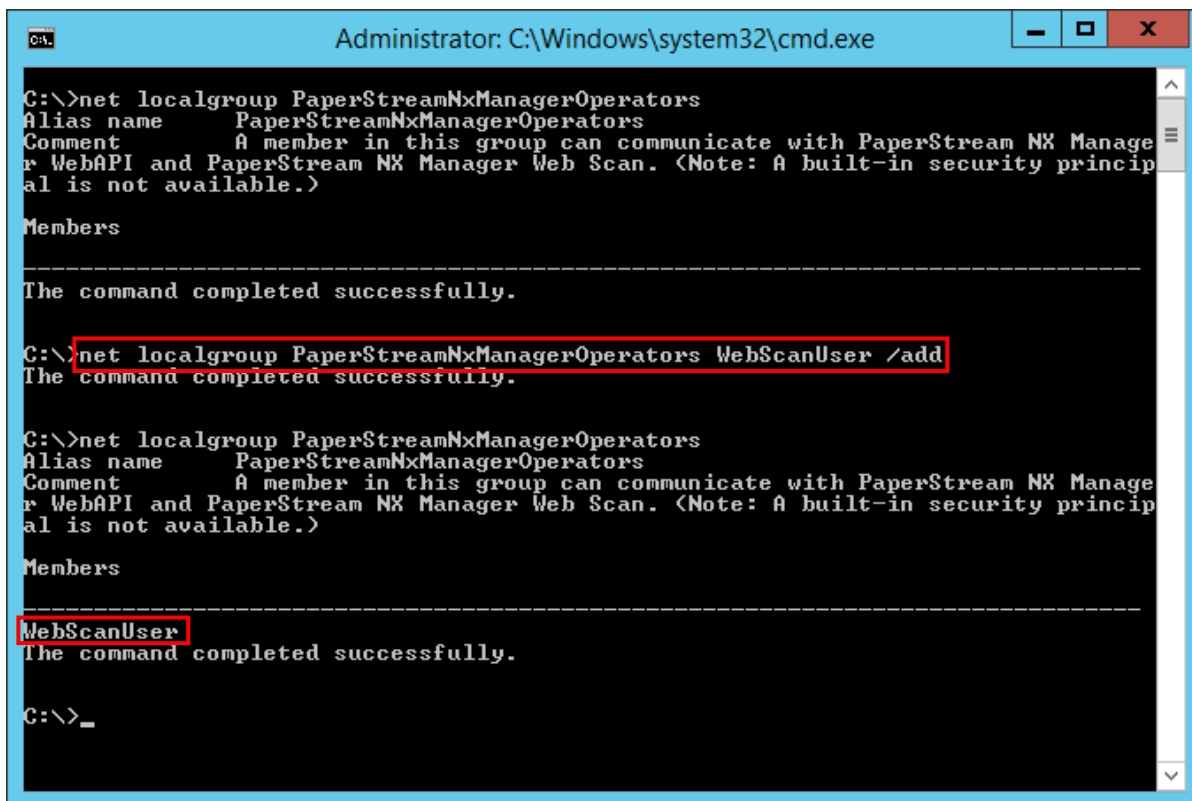


- (4) Confirm if additional users exist in the PaperStreamNxManagerOperators properties screen and then close the screen by clicking the [OK] button.



3.2 Adding authenticated users to the authentication group from the Command Prompt

- (1) Open a Command Prompt with administrator privileges.
- (2) Add authenticated users to the authentication group.
`net localgroup PaperStreamNxManagerOperators [username] /add`
* To create a new user added to the authentication group, refer to section ["4. Creating an authenticated user" \(page 13\)](#) and create the user first.
- (3) Check the added users.
`net localgroup PaperStreamNxManagerOperators`



The screenshot shows a Windows Command Prompt window titled "Administrator: C:\Windows\system32\cmd.exe". The window contains the following text:

```
C:\>net localgroup PaperStreamNxManagerOperators
Alias name      PaperStreamNxManagerOperators
Comment        A member in this group can communicate with PaperStream NX Manage
r WebAPI and PaperStream NX Manager Web Scan. <Note: A built-in security princip
al is not available.>
Members

-----
The command completed successfully.

C:\>net localgroup PaperStreamNxManagerOperators WebScanUser /add
The command completed successfully.

C:\>net localgroup PaperStreamNxManagerOperators
Alias name      PaperStreamNxManagerOperators
Comment        A member in this group can communicate with PaperStream NX Manage
r WebAPI and PaperStream NX Manager Web Scan. <Note: A built-in security princip
al is not available.>
Members

-----
WebScanUser
The command completed successfully.

C:\>_
```

In the screenshot, the command `net localgroup PaperStreamNxManagerOperators WebScanUser /add` and the output `WebScanUser` are highlighted with red boxes.

4. Creating an authenticated user

Create a user for the authentication function in the PaperStream NX Manager Web Scan. Only local user of the Windows Server on which NX Manager is installed can use the authentication function.

4.1 Creating an authenticated user

- (1) Open "Local Users and Group" screen.

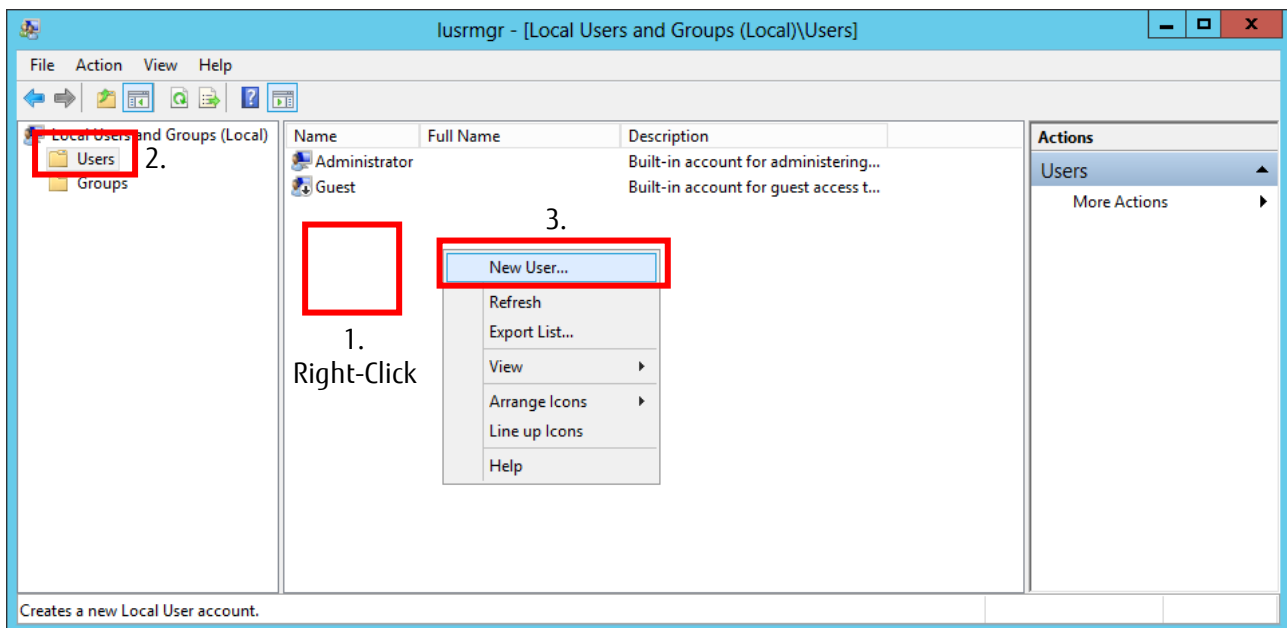
Refer to section ["3. Adding authenticated users to the authentication group \(1\)"](#) (page 6).

Note) If the "Local Users and Groups" screen does not work, refer to section ["4.2 Creating an authenticated user from the Command Prompt"](#) (page 15) to create and add an authenticated user.

- (2) Add a local user

On the "Local Users and Groups" screen, do the following to display the "New User" screen:

1. Click the Users folder to display the user list
2. Right-click in the user list area to display the context menu
3. Select "New User" in the context menu



The following "New User" screen appears. After entering the required information on this screen, click the "Create" button to create the user.

1. Enter the username to authenticate in the PaperStream NX Manager Web Scan
2. Enter the password of the user to authenticate the PaperStream NX Manager Web Scan
3. Uncheck the "User must change password at next logon" checkbox
If checked, PaperStream NX Manager Web Scan authentication will fail.
4. Click the [Create] button.

The 'New User' dialog box is shown with the following fields and options:

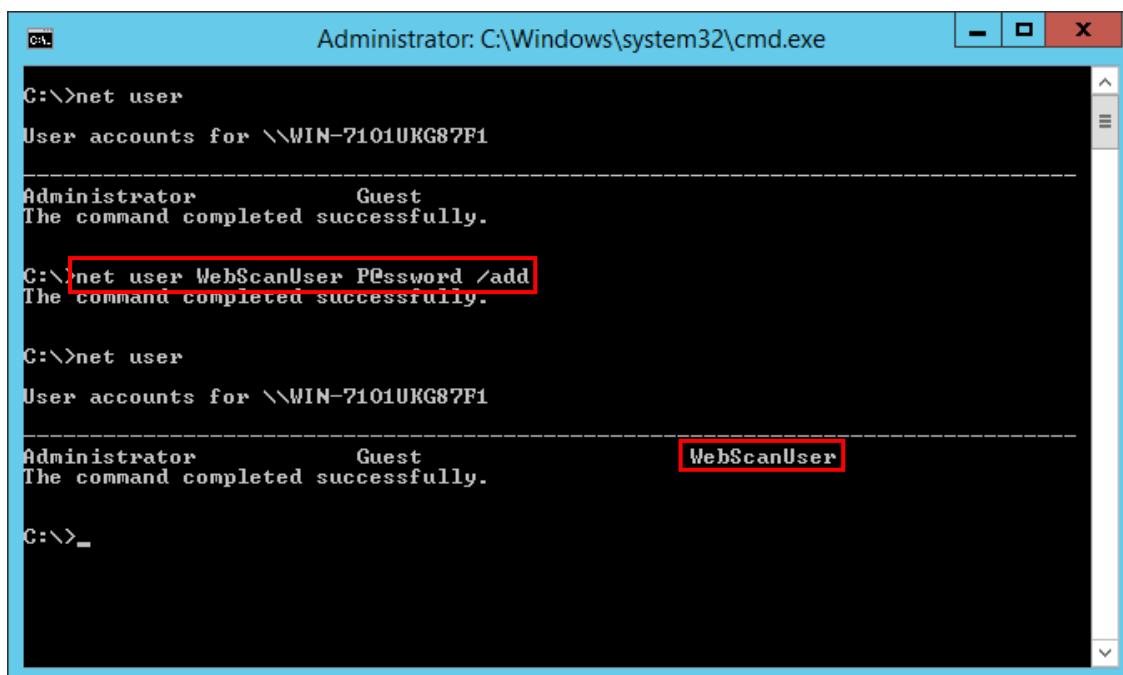
- User name:** WebScanUser (1.)
- Full name:** (empty)
- Description:** A user for Web Scan
- Password:** (seven dots) (2.)
- Confirm password:** (seven dots)
- User must change password at next logon (3.)
- User cannot change password
- Password never expires
- Account is disabled
- Buttons:** Help, Create (4.), Close

The user is created as shown in the red box by the above steps.

Name	Full Name	Description
Administrator		Built-in account for administering...
Guest		Built-in account for guest access t...
WebScanUser	WebScanUser	A user for Web Scan

4.2 Creating an authenticated user from the Command Prompt

- (1) Open a Command Prompt with administrator privileges.
- (2) Create a user.
net user [username] [password] /add
- (3) Check the created users.
net user



```
Administrator: C:\Windows\system32\cmd.exe
C:\>net user
User accounts for \\WIN-7101UKG87F1
-----
Administrator          Guest
The command completed successfully.

C:\>net user WebScanUser P@ssword /add
The command completed successfully.

C:\>net user
User accounts for \\WIN-7101UKG87F1
-----
Administrator          Guest          WebScanUser
The command completed successfully.

C:\>_
```

5. PaperStream NX Manager Web Scan Authentication

When the authentication function is enabled, a login screen appears when you access the PaperStream NX Manager Web Scan. Now log in with the user you added to the "PaperStreamNxManagerOperators" group.

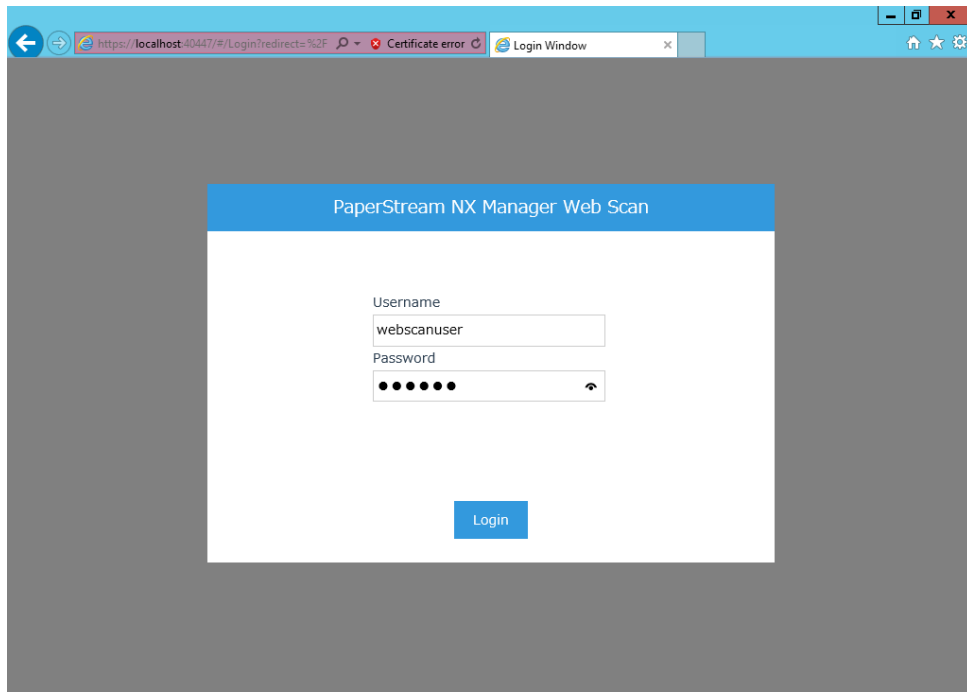


Fig. login screen

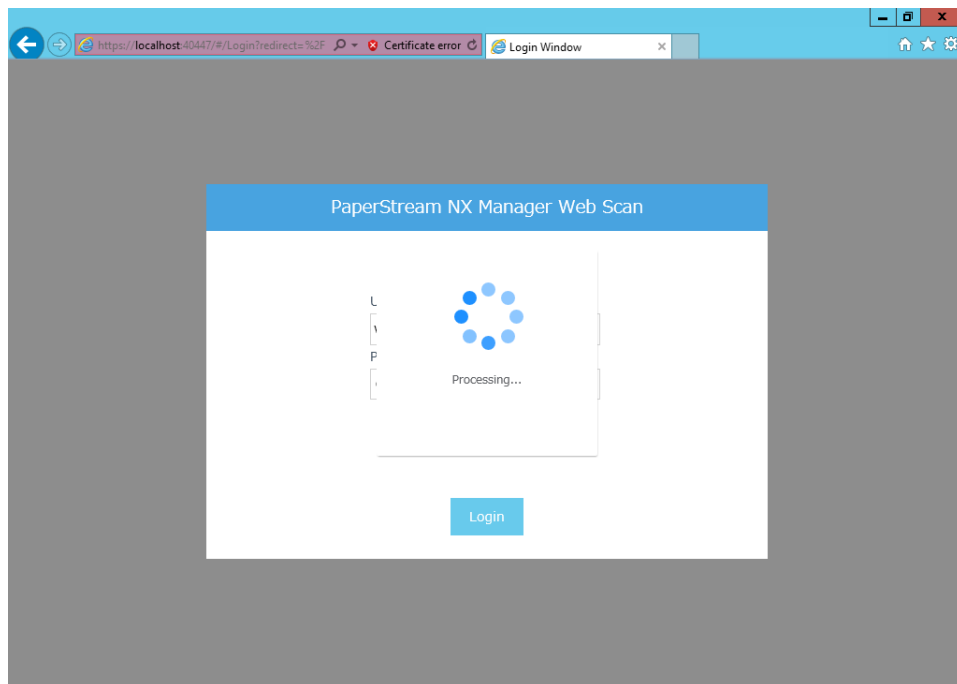


Fig. login processing screen

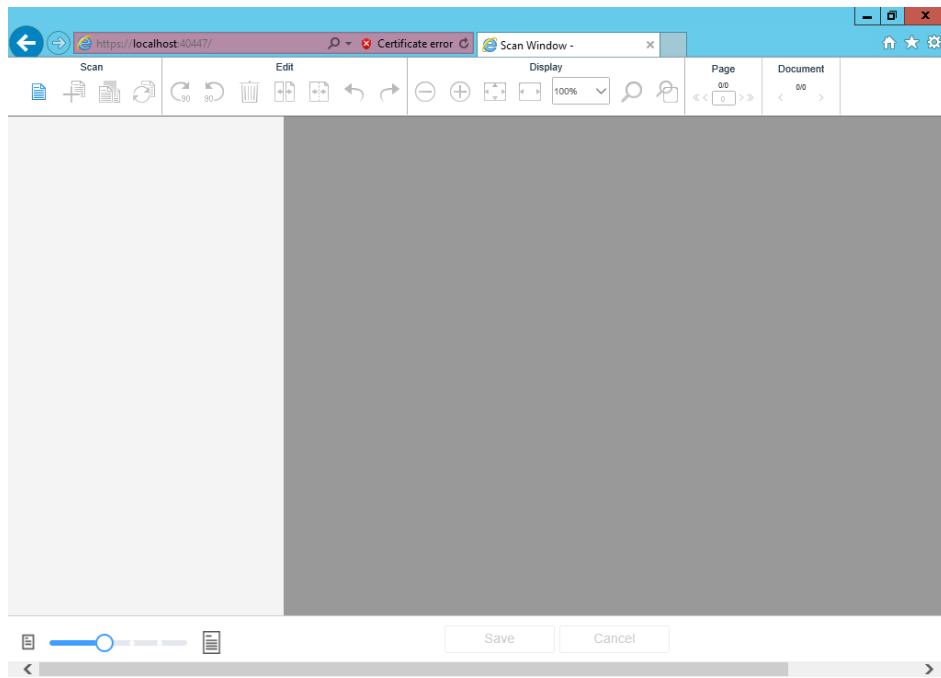


Fig. login completion screen

PaperStream NX Manager 1.5
PaperStream NX Manager Web Scan
Operation Guide for the Authentication Function

Issue date: March 2020

Issued by: PFU Limited

-
- The contents of this manual are subject to change without notice.
 - PFU Limited assumes no liability for incidental or consequential damages arising from the use of this product, and any claims by a third party.
 - Copying of the contents of this manual, in whole or in part, as well as the scanner applications is prohibited under the copyright law.