

Auto Power OFF Setup Tool

[The Functions of Auto Power OFF Setup Tool]

- Even when the Software Operation Panel is not installed, you can change the Auto Power OFF setting.
- By using the Scanner Central Admin function, you can apply the same Auto Power OFF setting to multiple devices.
Note: See [Operation Method] for details.

[The Usage Conditions of Auto Power OFF Setup Tool]

- This tool is enabled on Windows PC (XP/2003 or later) with the TWAIN/ISIS driver of the scanner device installed correctly, and in the state where the scanner device is recognized correctly (where the scanner device is displayed in [Scanners and Cameras] in the Control Panel). Also, please exit other scanning applications and ScanSnap Mode before using this tool.
(Scanning operation by the driver and changing the Software Operation Panel settings are not available while this tool is running.)
- To use this tool with CGA board connected (HVRS), HVRS needs to be installed.
- According to the language environment of the operating system, the display is in Japanese, English, German, French, Italian, Spanish, Chinese (Simplified/Traditional), Russian, Korean, or Portuguese. (In the case of other languages, English is applied)
- Please use this tool under the Administrator privileges.

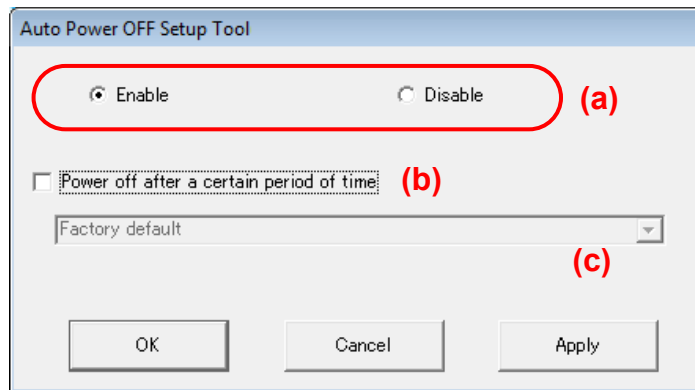
[The Configuration of Auto Power OFF Setup Tool]

- (1) AutoPowerOff_CTL.exe: Executable file of this tool. Displays the start screen and allows you to perform detailed settings and to assign from command line.
- (2) Others
 - Cmtaupi.dll: Command Execution DLL
 - Usbenv.ini: File for Command Execution DLL
 - resource: Resource folder for multiple languages
 - AutoPOffRes040A.dll: Resource DLL
 - AutoPOffRes040C.dll: Resource DLL
 - AutoPOffRes0404.dll: Resource DLL
 - AutoPOffRes0407.dll: Resource DLL
 - AutoPOffRes0409.dll: Resource DLL
 - AutoPOffRes0410.dll: Resource DLL
 - AutoPOffRes0411.dll: Resource DLL
 - AutoPOffRes0412.dll: Resource DLL
 - AutoPOffRes0416.dll: Resource DLL
 - AutoPOffRes0419.dll: Resource DLL
 - AutoPOffRes0804.dll: Resource DLL

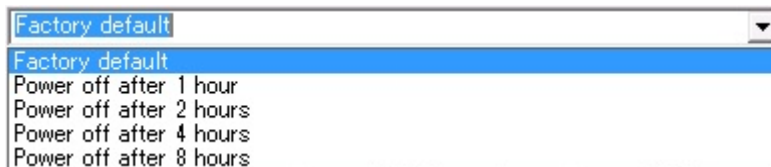
[Operation Method]

Auto Power OFF CTL.exe

- 1) To set from the advanced settings screen
The advanced settings screen below will appear.



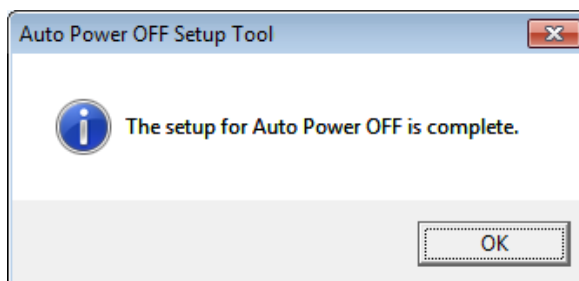
- (a) Select a radio button whether to enable/disable the Auto Power OFF function.
- (b) If you selected to enable the Auto Power OFF mode, you can select whether or not to turn off the power automatically after a certain period of time by selecting/clearing the check box. If you selected to disable the function, you cannot select the check box.
- (c) In order to set the power to turn off automatically after a certain period of time, select time from the combo box.



Note: If you cleared the check box in step (b) in order not to activate the Auto Power OFF mode after a certain period of time, the combo box is disabled.

Change the settings by clicking the [OK] button or [Apply] button. (If you clicked the [OK] button, the tool will end after the setting is complete. Clicking the [Apply] button returns to the startup screen after the setting is complete. If you clicked the [Cancel] button, the tool will end without completing the setting.)

The following message appears after the setting is normally completed.



2) To set the silent mode from the command line

You can run silent mode by specifying the command line with this tool.
(If you apply this command, the startup screen and/or the completion message will not be displayed)

The following 3 files are required for silent mode:

AutoPowerOff_CTL.exe:	Executable file
Cmtaupi.dll:	Command Execution DLL
Usbenv.ini:	File for Command Execution DLL

The result is reported with the Return Code. (The Return Code is 0 when the process has successfully completed, and is a value other than 0 when an error occurs. For details, refer to Appendix A.)

You can output the log file according to parameter specification.

How to specify:

- e: Enables the Auto Power OFF mode
- d: Disables the Auto Power OFF mode
- l: Outputs the log file.
- p: Specifies the destination folder of the log file.

To change the Auto Power OFF time, specify the time as a decimal number. You can specify 0 (factory default = 4 hours), 1, 2, 4, and 8. Other values are recognized as 0.

0 : 4 hours
1 : 1 hour
2 : 2 hours
4 : 4 hours
8 : 8 hours
Other decimal number : 4 hours

- e.g.) AutoPowerOff_CTL.exe – e: 0 Enables the function, and Auto Power OFF time = 4 hours later
- e.g.) AutoPowerOff_CTL.exe – e: 8 Enables the function, and Auto Power OFF time = 8 hours later
- e.g.) AutoPowerOff_CTL.exe – e Enables the function, and does not change Auto Power OFF time
- e.g.) AutoPowerOff_CTL.exe – d Does not allow the power to turn off after a certain period of time

The default name of the log file is “Result.txt”. If the file with identical name exists, the result is added to the existing file (output size is about 200 bytes each time).
Specify the file name as [“-l *file name*”] if you want to change the log file name.

Specify the folder name as [“-p *folder name*”] if you want to redirect the destination folder of the log file. If the folder is not specified, the log file is output under the same folder where this tool (AutoPowerOff_CTL.exe) is stored.

If the log file cannot be output to the specified folder (such as CD/DVD), it is output on the desktop.

Format example) AutoPowerOff_CTL.exe –e:0 –l

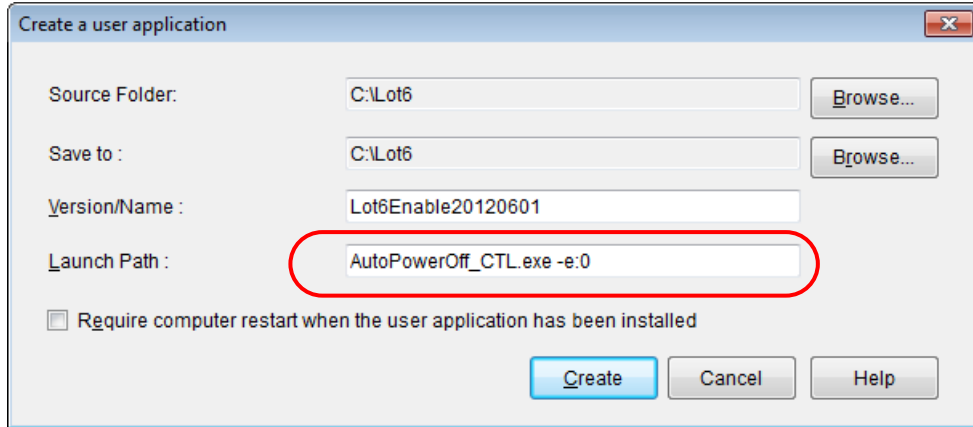
- Enables the function, and Auto Power OFF time = 4 hours later.
The result is named as “Result.txt” and output to the folder where this tool is stored.

Format example) AutoPowerOff_CTL.exe –e:0 “-l logfile.txt” “-p c:\test”

- Enables the function, and Auto Power OFF time = 4 hours later.
The result is named as “logfile.txt” and output to the folder “c:\test”.

You can also apply the same Auto Power OFF setting to multiple devices by using Scanner Central Admin function.

Run SCAModuleCreator.exe and click the [Setup] button for [Create a user application].

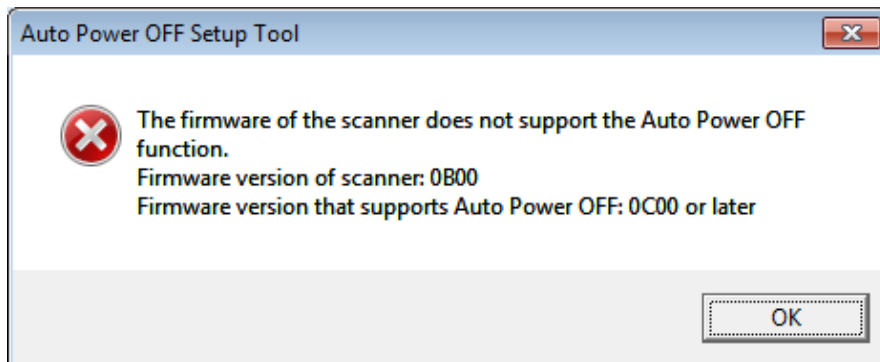


For [Launch Path], type in a command by referring to the examples above. Click the [Create] button to create the user application (.CAB file).

Note: For details about setting configuration, refer to section “3.9 Updating the Image Scanners” in Chapter 3 of the Scanner Central Admin User’s Guide.

[Error Messages]

If the Auto Power OFF function cannot be set, an error message explaining the reason appears. (Refer to Appendix A for details about the Error List and how to resolve the problem.) Exit the tool, and then try again after making sure that the Auto Power OFF function can be set.



Example: The target scanner does not support the Auto Power OFF function

The Auto Power OFF function cannot be used if the above message appears.

Appendix A: Return Codes

The user is notified of Return Codes when the Auto Power OFF function is set from the command line.

(When using DOS, the environmental variable ERRORLEVEL can judge the Return Code.)

Example: `cmd/c AutoPowerOff_CTL.exe-e:0`
`echo %errorlevel%`

Return Code	Content	Resolution
0	Setup is completed successfully.	No action required.
-1	The firmware updater is running.	Exit the firmware updater or this tool.
-2	There is no scanner connected that supports the Auto Power OFF function.	Connect with a target scanner (Power on) Exit the applications that can perform scan or configure the scan settings (ScandAll PRO, QuickScan, SOP). If connecting CGA board, install HVRS.
-3	An error occurred while processing exclusive control on the scanner.	Exit the applications that can perform scan or configure the scan settings (ScandAll PRO, QuickScan, SOP). Or exit this tool. Check if there are any errors in the operating system (Restart the computer if you are not sure)
-4	The scanner is being used by another application.	Exit the applications that can perform scan or configure the scan settings (ScandAll PRO, QuickScan, SOP).
-17	Failed to read EEPROM.	Check if the cables are connected correctly. Check for any hardware errors in the target scanner. If any hardware errors are found, repair the scanner, and then try again.
-18	The scanner does not support the Auto Power OFF function.	— (The Auto Power OFF function cannot be used.)
-19	Failed to obtain the firmware version.	Check if the cables are connected correctly. Check for any hardware errors in the target scanner. If any hardware errors are found, repair the scanner, and then try again.
-20	The status of the firmware of the target scanner is abnormal.	— (The Auto Power OFF function cannot be used.)
-21	Failed to write to EEPROM.	Check if the cables are connected correctly. Check for any hardware errors in the target scanner. If any hardware errors are found, repair the scanner, and then try again.
-33	USB power feeding is enabled.	Check the settings of the target scanner. Disable the USB power feeding mode, and try again.
-34	The power switch is disabled.	Check the settings of the target scanner. Enable the power switch, and try again.
-35	USB power feeding is enabled.	Check the settings of the target scanner. Disable the USB power feeding mode, and try again.
-36	Emulation mode is enabled.	Check the settings of the target scanner. Disable the emulation mode, and try again.

-49	The firmware of the scanner does not support the Auto Power OFF function.	— (The Auto Power OFF function cannot be used.)
-128	The specified command line is incorrect. (multiple or unknown specification)	Check the parameter of the executed command. Correct any wrong parameter, and try again.

If the log file was not output correctly, “-1000” is added to the Return Code.
Refer to the example blow.

-1000	Setting was completed correctly. The log file was not output correctly.	Check if the destination folder of the log file is write-inhibited.
-1019	Failed to read the firmware version. The log file was not output correctly.	
-1049	The firmware of the target scanner does not support the Auto Power OFF function. The log file was not output correctly.	