

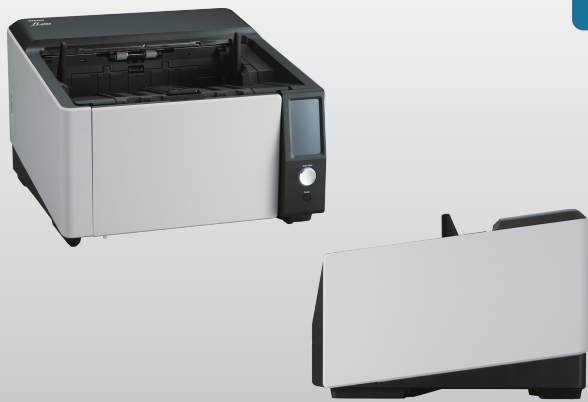
Image Scanner

# RICOH fi-8950

## Datasheet

Scanner

**RICOH**  
imagine. change.



## Unlock work efficiency with ultra-fast scans to endure daily duties

- High speed and volume scanning to endure daily duties
- Unlocking work efficiency of job operators
- Usability-first design for smooth operation

### Enhanced productivity, ideal for large daily duties

The fi-8950 achieves a scanning speed of 150 ppm/300 ipm (A4 landscape, color, 200/300 dpi), and is highly optimized for centralized scanning.

### Increase work efficiency with exceptionally accurate feeding

Offering two novel functions, the scanner realizes stable paper feeding performance, even for high-volume scanning with a mixed batch. Automatic Skew Correction corrects the skew of documents one by one before feeding. To prevent stapled documents, which are easy to overlook from being damaged when batch scanning, Stapled Documents Detection detects stapled documents regardless of where the staple position is and stops document feeding immediately.

### Designed to prioritize operator usability

The scanner can handle a wide variety of documents. The Dual Path Mechanism enables switching of the ejecting paths. Documents up to

1.25 mm, such as cardboard envelopes can be scanned with Straight Scan, while the U-turn Scan enables continuous scanning for standard documents. Manual Feed Mode scans bi-folded and multi-layered documents as is.

The paper ejection control after scanning has been well-improved. Even when scanning at higher speed, documents are neatly stacked in order, since the scanner quickly controls the paper output speed by identifying each document's size and position. With the improved ejecting abilities, even folded or curled documents, which tend to cause paper jams at the paper outlet, are handled smoothly. Operators can collect scanned documents without fuss or hassle.

The scanner also comes with a 4.3-inch touch screen for easier operation, and it supports LAN and USB 3.2 connectivity.

### Effective data utilization combined with the PaperStream Series

The scanner driver, PaperStream IP, automatically produces clear image data and supports OCR accuracy. The powerful capture software PaperStream Capture efficiently feeds information into organization workflow by automatically utilizing data extracted from barcodes and zonal OCR, further streamlining mundane tasks.

Technical Information

Scanner Type	ADF (Automatic Document Feeder)/Manual Feed, Duplex
Scanning Speed* <sup>1</sup> (A4 Landscape) (Color* <sup>2</sup> /Grayscale* <sup>2</sup> / Monochrome* <sup>3</sup> )	Simplex: 150 ppm (200/300 dpi) Duplex : 300 ipm (200/300 dpi)
Scanning Speed* <sup>1</sup> (A4 Portrait) (Color* <sup>2</sup> /Grayscale* <sup>2</sup> / Monochrome* <sup>3</sup> )	Simplex: 115 ppm (200/300 dpi) Duplex : 230 ipm (200/300 dpi)
Image Sensor Type	CIS x 2 (front x 1, back x 1)
Light Source	RGB LED x 4 (front x 2, back x 2)
Optical Resolution	600 dpi
Output Resolution* <sup>4</sup> (Color/Grayscale/ Monochrome)	50 to 600 dpi (adjustable by 1 dpi increments), 1,200 dpi (driver)* <sup>5</sup>
Output Format	Color: 24-bit, Grayscale: 8-bit, Monochrome: 1-bit
Background Colors	White/Black (selectable)
Document Size	
Maximum	304.8 x 431.8 mm (12 x 17 in.)
Minimum	48 x 70 mm (1.9 x 2.8 in.)
Long Page Scanning* <sup>6</sup>	6,096 mm (240 in.) (up to 200 dpi)
Paper Weight (Thickness)	
Straight Scan	
Larger than A5 and up to A4 Size	20 to 570 g/m <sup>2</sup> (5.3 to 152 lb)
A5 or Smaller and Over A4 Size	40 to 570 g/m <sup>2</sup> (11 to 152 lb)
Envelope	1.25 mm or less
U-turn Scan	
Larger than A5 and up to A4 Size	20 to 209 g/m <sup>2</sup> (5.3 to 56 lb)
A5 or Smaller Size	64 to 209 g/m <sup>2</sup> (17 to 56 lb)
Over A4 Size	64 to 256 g/m <sup>2</sup> (17 to 68 lb)* <sup>7</sup>
ADF Capacity* <sup>8</sup>	750 sheets (A4 80 g/m <sup>2</sup> or Letter 20 lb) Total thickness: less than 80 mm
Expected Daily Volume* <sup>9</sup>	130,000 sheets
Multifeed Detection	Overlap detection (Ultrasonic sensor), Length detection
Paper Protection	Stapled Documents Detection, Lag detection
Other Functions	Automatic Skew Correction
Interface	
USB	USB 3.2 Gen1/USB 3.0/USB2.0/USB1.1
Ethernet	10BASE-T/100BASE-TX/1000BASE-T
Power Requirements	AC 100 to 240 V ±10%

Power Consumption	
Operating Mode	70 W or less/40 W or less (Eco mode)
Sleep Mode	2.5 W or less
Auto Standby (Off) Mode	0.2 W or less
Operating Environment	
Temperature	5 to 35°C (41 to 95°F)
Relative Humidity	15 to 80% (non-condensing)
Environmental Compliance	ENERGY STAR, RoHS
Dimensions* <sup>10</sup> (Width x Depth x Height)	460 x 430 x 315 mm (18.1 x 16.9 x 12.4 in.)
Weight	23 kg (50.7 lb)
Supported Operating System	Windows 11* <sup>11</sup> , Windows 10* <sup>11</sup> , Windows Server 2025, Windows Server 2022, Windows Server 2019, Windows Server 2016
Software/Drivers* <sup>13</sup>	PaperStream IP Driver (TWAIN/TWAIN x64/ISIS), WIA Driver* <sup>12</sup> , PaperStream Capture, PaperStream ClickScan, Software Operation Panel, Error Recovery Guide, PaperStream Central Admin
Image Processing Functions	Multi image output, Automatic color detection, Blank page detection, Static threshold, Dynamic threshold (iDTC), Advanced DTC, SDTC, Error diffusion, Dither, De-Screen, Emphasis, Dropout color (None/Red/ Green/Blue/White/Saturation/Custom), sRGB output, Hole punch removal, Cropping, Index tab cropping, Split image, De-Skew, Edge correction, Vertical streaks reduction, Character extraction, Background pattern removal, Automatic profile selection
Included Items	AC cable, AC adapter, USB 3.0 cable, Setup DVD-ROM

Options

RICOH fi-890PRF	PA03830-D301	Front-side printing on document
RICOH fi-890PRB	PA03830-D303	Back-side printing on document
Carrier Sheets	PA03360-0013	Each package contains 5 carrier sheets
Photo Carrier Sheets	PA03770-0015	Each package contains 3 carrier sheets
PaperStream Capture Pro Premium	PA43404-B421	One year license of PaperStream Capture Pro Premium

Consumables

Pick Roller	PA03830-K021	Every 700,000 sheets* <sup>14</sup>
Separator Roller	PA03830-K022	Every 700,000 sheets* <sup>14</sup>
Brake Roller	PA03830-K023	Every 700,000 sheets* <sup>14</sup>
Print Cartridge	CA00050-0262	4,000,000 printed characters

\*<sup>1</sup> Scanning speeds may vary due to the system environment. For details, please visit our website at: <https://www.pfu.ricoh.com/global/scanners/fi/>. \*<sup>2</sup> Indicated speeds are from using JPEG compression. \*<sup>3</sup> Indicated speeds are from using TIFF CCITT Group 4 compression. \*<sup>4</sup> When scanning in high resolutions (600 dpi or above), scanning may be rejected depending on scanning mode, document size, memory size, and application program. Selectable maximum resolution may vary depending on the length of the scanned document. \*<sup>5</sup> Limitations may apply to the size of documents that can be scanned, depending on system environment, when scanning at high resolution (over 600 dpi). \*<sup>6</sup> The maximum document length for long page scanning depends on the resolution: 5,461 mm (215 in.) for up to 300 dpi, 4,064 mm (160 in.) for up to 400 dpi, 863.6 mm (34 in.) for up to 600 dpi, and 431.8 mm (17 in.) for up to 1,200 dpi. \*<sup>7</sup> Scanning of documents from 209 to 256 g/m<sup>2</sup> (56 to 68 lb) is supported only when the temperature is 25±5°C (77±9°F) and humidity is 50±10%. \*<sup>8</sup> Maximum capacity depends on paper weight and may vary. \*<sup>9</sup> Numbers are calculated using scanning speeds and typical hours of scanner use, and are not meant to guarantee daily volume or unit durability. \*<sup>10</sup> With the ADF hopper closed. \*<sup>11</sup> fi Series scanners do not run with Windows 11 and 10 ARM-based PCs. \*<sup>12</sup> Functions equivalent to those offered by PaperStream IP may not be available with the WIA Driver. \*<sup>13</sup> Refer to the fi Series Support Site for driver/software downloads and full lineup of all supported operating system versions. \*<sup>14</sup> Replacement cycles are guidelines for using A4 documents (80 g/m<sup>2</sup> [20 lb]). These cycles vary depending on the type of documents scanned, how often the scanner is used and cleaned, and your operating environment.

Trademarks

ISIS is a trademark of Open Text. Microsoft, Windows, and Windows Server are trademarks of the Microsoft group of companies. Any other products or company names appearing in this document are the trademarks or registered trademarks of the respective companies.

Safety Precautions

Be sure to carefully read all safety precautions prior to using this product and use this device as instructed. Do not place this device in wet, moist, steamy, dusty or oily areas. Using this product under such conditions may result in electrical shock, fire or damage to this product. Be sure to limit the use of this product to listed power ratings.

ENERGY STAR

PFU Limited has determined that this product meets the ENERGY STAR guidelines for energy efficiency. ENERGY STAR and the ENERGY STAR mark are trademarks or registered trademarks of the U.S. Environmental Protection Agency.

PFU Limited

RICOH and RICOH logo are registered trademarks of Ricoh Co., Ltd. Other product names are the trademarks or registered trademarks of the respective companies.

Specifications are subject to change without notice. Visit the fi Series website for more information. <https://www.pfu.ricoh.com/global/scanners/> © PFU Limited 2026

<https://www.pfu.ricoh.com/global/>