



Getting Started

Thank you for purchasing ScanSnap S1300i (hereinafter referred to as "the ScanSnap"). This manual describes the preparation required for use of the ScanSnap. Follow the preparation procedures described in this manual.

For details about ScanSnap functions and features, basic operation, daily care, and consumable replacement, refer to the Operator's Guide (PDF) which is available on the Setup DVD-ROM. Keep this manual in a safe place so that you can refer to it at any time when using the ScanSnap.

Microsoft product screenshots are reprinted with permission from Microsoft Corporation.

Microsoft, Windows, Windows Vista, Excel, and SharePoint are either registered trademarks or trademarks of Microsoft Corporation in the United States and/or other countries.

Apple, the Apple logo, Mac, Mac OS, OS X, iPhoto, and App Store are trademarks of Apple Inc.

ABBYY™ FineReader™ Engine © ABBYY. OCR by ABBYY

ABBYY and FineReader are trademarks of ABBYY Software, Ltd. which may be registered in some jurisdictions.

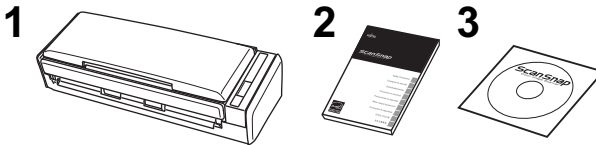
Other company names and product names are the registered trademarks or trademarks of the respective companies.

September 2014

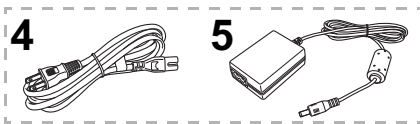
© PFU LIMITED 2012-2014

Checking the Components

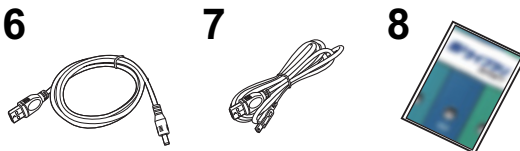
Make sure that all items shown below are included in the package.



1. ScanSnap (× 1)
2. Safety Precautions (× 1)
3. Setup DVD-ROM (× 1)
4. AC cable (× 1)(*1)
5. AC adapter (× 1)
6. USB bus power cable(× 1)
7. USB cable (USB 2.0 supported) (× 1)
8. Rack2-Filer Smart with Magic Desktop (× 1)
(Exclusive to ScanSnap S1300i Deluxe)(*2)



Power cable



*1: The contents may vary depending on the country and the ScanSnap model purchased.

*2: Bundled with FI-S1300A-D.

If any other packaging is provided, make sure to store it as well. Make sure to handle the components with care.

The box and packaging materials are required for storage and transportation of the ScanSnap. Do not throw them away.




If anything is missing or damaged, contact your FUJITSU scanner dealer or an authorized FUJITSU scanner service provider.

Read the Safety Precautions

Before using the ScanSnap, make sure to read and understand the information provided in the "Safety Precautions" document.

Symbols Used in This Manual

The following symbols are used in this manual.

Symbol	Description
	This indication alerts operators of an operation that, if not strictly observed, may result in safety hazards to personnel or damage to the product.
	This symbol indicates operations using Windows®.
	This symbol indicates operations using Mac OS.

Referring to the "Operator's Guide"

To refer to the "Operator's Guide", insert the Setup DVD-ROM into the DVD-ROM drive, and follow the procedure below.

Windows

Click the [Manuals] button in the [ScanSnap Setup] dialog box, and then the [Operator's Guide] button.

Mac OS

Double-click the [Operator's Guide] icon in the [ScanSnap] window.

Installing the Software

Windows® Installation (→ [page 2](#))

Mac OS Installation (→ [page 4](#))

ATTENTION

- Do not connect the ScanSnap to your computer before installing the software.
- If you have no DVD-ROM drive, please visit the following web page:
<http://scansnap.fujitsu.com/g-support/en/>

HINT

When you export the data scanned by the ScanSnap to your mobile device, download ScanSnap Connect Application for mobile from an application store such as the App Store or Google Play.

Windows® Installation

■ Software

You can install the following software.

- ScanSnap Manager (Scanner driver)
- ScanSnap Organizer (File management application)
- CardMinder (Business card management application)
- ABBYY FineReader for ScanSnap™ (OCR application)

Install other software bundled with the ScanSnap as needed.

For details about each software and its installation procedures, refer to "Installing the Software" in the Operator's Guide.

■ System Requirements

Operating system	Windows® 8.1 (32-bit/64-bit) (*1) Windows® 8 (32-bit/64-bit) (*1) Windows® 7 (32-bit/64-bit) Windows Vista® (32-bit/64-bit) (*2) Windows® XP (32-bit) (*3)
CPU	Intel® Core™2 Duo 2.2 GHz or higher (Recommended: Intel® Core™ i5 2.5 GHz or higher)
Memory	32-bit: 1 GB or more (Recommended: 4 GB or more) 64-bit: 2 GB or more (Recommended: 4 GB or more)
Display resolution (*4)	Windows® 8.1/Windows® 8: 1024 × 768 pixels or higher Windows® 7/Windows Vista®/ Windows® XP: 800 × 600 pixels or higher
Hard disk space (*5)	2850 MB or more of free hard disk space (1 GB or more is required for ScanSnap S1300i Deluxe. For details, refer to the manual of Rack2-Filer Smart with Magic Desktop.)
USB port	USB3.0(*6)/USB2.0/USB1.1

- *1: The software bundled with the ScanSnap operates as a desktop application.
- *2: Service Pack 2 or later is required.
- *3: Service Pack 3 or later is required.
- *4: When the font size is large, some screens may not be displayed properly.
In that case, use a smaller font size.
- *5: For Windows® 8.1, Windows® 8, Windows Vista®, and Windows® XP, if Microsoft® .NET Framework 3.5 SP1 is not installed, a maximum of 500 MB of additional free hard disk space is required.
- *6: When using a USB 3.0 port, data is transferred at the same speed as USB 2.0.

ATTENTION

- If the system requirements above are not satisfied, the ScanSnap may not operate.
- Scanning speed will slow down in the following cases:
 - The CPU or the memory does not meet the required specifications
 - The USB port or the USB hub is version 1.1
- The actual increase in used disk space after installation and the required disk space for installation may differ from each other depending on your Windows® system disk management.

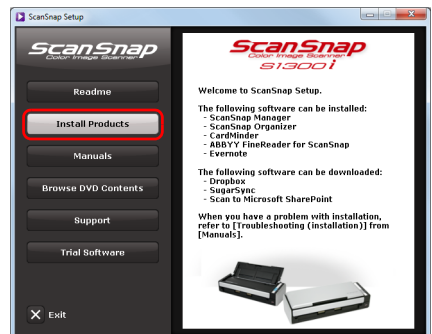
■ Installation

1. Turn on the computer and log on as a user with Administrator privileges.
2. Insert the Setup DVD-ROM into the DVD-ROM drive.
⇒ The [ScanSnap Setup] dialog box appears.

HINT

If the [ScanSnap Setup] dialog box does not appear, double-click "ScanSnap.exe" in the DVD-ROM via Windows Explorer.

3. Click the [Install Products] button.



⇒ The [Install Products] dialog box appears.

4. Click the [ScanSnap] button.

Follow the instructions on the screen to continue with the installation.



If installation is not completed successfully, click the [Manuals] button in the [ScanSnap Setup] dialog box, and then the [Troubleshooting (installation)] button, and refer to Troubleshooting (installation).

Mac OS Installation

■ Software

You can install the following software.

- ScanSnap Manager (Scanner driver)
- CardMinder (Business card management application)
- ABBYY FineReader for ScanSnap™ (OCR application)

Install other software bundled with the ScanSnap as needed.

For details about each software and its installation procedures, refer to "Installing the Software" in the Operator's Guide.

■ System Requirements

Operating system (*1)	OS X v10.9 OS X v10.8 (Recommended: 10.8.1 or later) Mac OS X v10.7 (Recommended: 10.7.4 or later) Mac OS X v10.6 (Recommended: 10.6.8)
CPU	Intel® Core™2 Duo 2.4 GHz or higher (Recommended: Intel® Core™ i5 2.5 GHz or higher)
Memory	2 GB or more (Recommended: 4 GB or more)
Display resolution	1024 × 768 pixels or higher
Hard disk space	2230 MB or more of free hard disk space
USB port	USB3.0(*2)/USB2.0/USB1.1

*1: It is recommended to apply the latest updates to Mac OS.

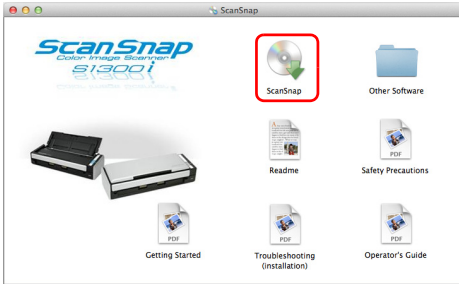
*2: When using a USB 3.0 port, data is transferred at the same speed as USB 2.0.

ATTENTION

- If the system requirements above are not satisfied, the ScanSnap may not operate.
- Scanning speed will slow down in the following cases:
 - The CPU or the memory does not meet the required specifications
 - The USB port or the USB hub is version 1.1

■ Installation

1. Turn on the computer and log on as a user with Administrator privileges.
2. Insert the Setup DVD-ROM into the DVD-ROM drive.
⇒ The [ScanSnap] window appears.
3. Double-click the [ScanSnap] icon.
Follow the instructions on the screen to continue with the installation.



Connecting the ScanSnap

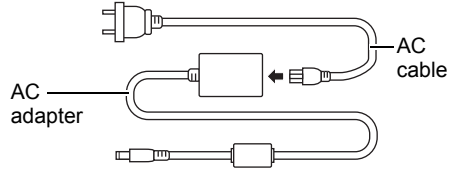
ATTENTION

- Only one ScanSnap can be used by a computer at a time.
- Use only the cables bundled with the ScanSnap.

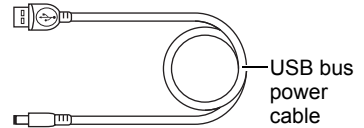


To prevent damage to the ScanSnap, use only the AC adapter bundled with the ScanSnap.
Manufacturer: LEI
Model No.: NU13-1072166-I3

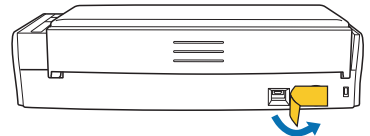
1. Select a power cable depending on where you want to use the ScanSnap.
 - To use the ScanSnap at a fixed location: Use the power cable to connect to an AC outlet.
For details about connection, refer to "Using the Power Cable" (page 6) in Step 3.



- To use the ScanSnap outside with your laptop computer, or in a place where there are no AC outlets nearby: Use the USB bus power cable to connect to your computer.
For details about connection, refer to "Using the USB Bus Power Cable" (page 6) in Step 3.



2. Remove the tape seal covering the USB connector and power connector of the ScanSnap.



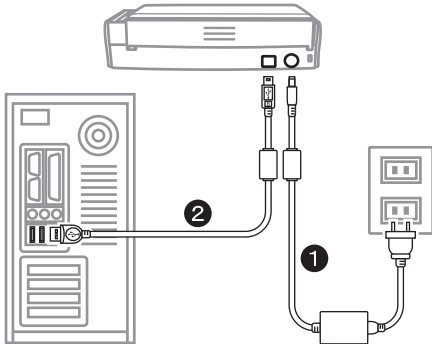
3. Connect the cables to the ScanSnap.

ATTENTION

- To power on the ScanSnap, the USB cable and either of the power cables (power cable or USB bus power cable) need to be connected.
- When using a USB hub, make sure to connect the ScanSnap to the USB hub which is connected to a USB port of your computer. Use a powered hub equipped with an AC adapter.
- If the USB port or the USB hub is version 1.1, scanning speed will slow down.
- Connect the USB cable with the USB mark facing up.

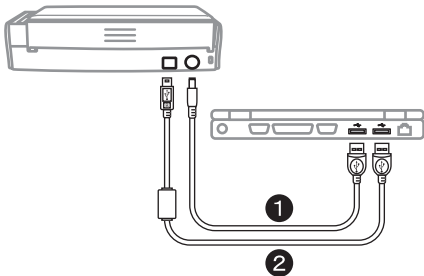
● Using the Power Cable

1. Connect the power cable ① to the power connector of the ScanSnap, and plug it in the AC outlet.
2. Connect the USB cable ② to the USB connector on the ScanSnap and the USB port on your computer.

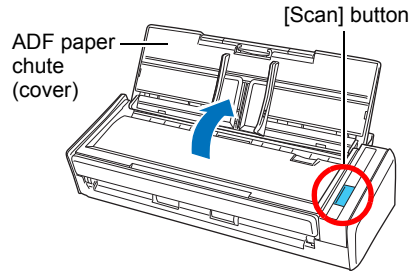


● Using the USB Bus Power Cable

1. Connect the USB bus power cable ① to the power connector on the ScanSnap and the USB port on your computer.
2. Connect the USB cable ② to the USB connector on the ScanSnap and the USB port on your computer.



4. Open the ADF paper chute (cover) of the ScanSnap.




⇒ The ScanSnap is powered on and the [Scan] button lights in blue.

ATTENTION

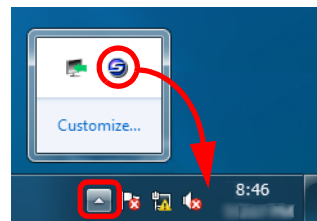
- The bottom part of the ScanSnap may become hot when the ScanSnap is being used but this does not affect ScanSnap operation or cause any physical harm. Be careful not to drop the ScanSnap when carrying it.
- When the ScanSnap is turned on and left unused for 4 hours, it will turn itself off automatically. To turn the ScanSnap back on, perform one of the following operations:
 - Press the [Scan] button
 - Close the ADF paper chute (cover) and open it again
 The time until power-off can be changed. For details, refer to the Operator's Guide.

5. Check the ScanSnap Manager icon.



Windows

⇒ The ScanSnap Manager icon (S) (S for USB bus powered connection) is displayed in the menu that appears when you click  on the taskbar.



To have the ScanSnap Manager icon (S) (S for USB bus powered connection) always displayed on the taskbar, drag the icon and drop it onto the taskbar.



ATTENTION



If the ScanSnap Manager icon is , right-click  and select [To establish connection] to refer to "Troubleshooting".

Mac OS

⇒ The ScanSnap Manager icon  ( for USB bus powered connection) appears in the Dock.



ATTENTION

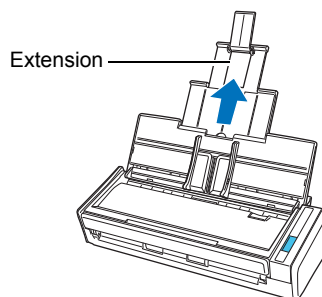
If the ScanSnap Manager icon is , while holding down the [control] key, click  and then select [To establish connection] from the menu to refer to "Troubleshooting".

Scan Test

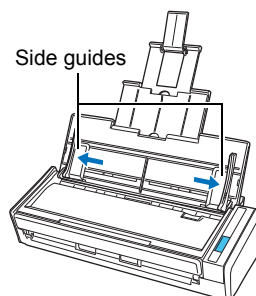
For details about the documents that can be scanned with the ScanSnap and how to load documents, refer to "ScanSnap Overview" in the Operator's Guide.

1. Load a document in the ScanSnap.

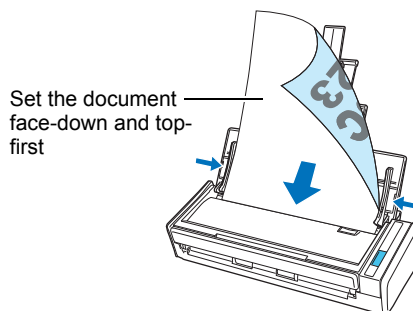
1. Pull up the extension.



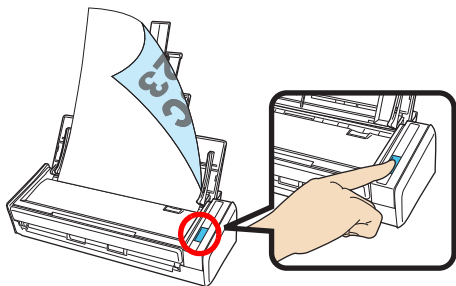
2. Slide open the side guides.



3. Load the document in the ADF paper chute (cover), and adjust the side guides to the size of the document.



2. Press the [Scan] button on the ScanSnap.



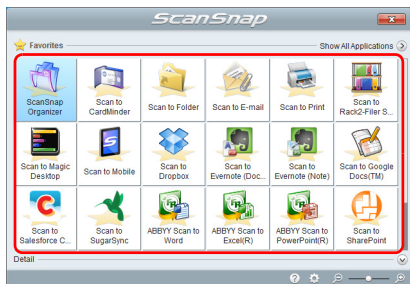
⇒ Scanning starts. The Quick Menu appears when the scanning is completed.

ATTENTION

If scanning does not start, refer to "Troubleshooting" in ScanSnap Manager Help.

3. In the Quick Menu, click the icon of the application to link with ScanSnap Manager.

Windows



Mac OS



⇒ The selected application starts up.

Check that ScanSnap Manager is linked with the application that was selected in the Quick Menu.

Contact for Inquiries

● ABBYY FineReader for ScanSnap™

Windows

From [Start] menu, select [All Programs] → [ABBYY FineReader for ScanSnap (TM) 5.0] → [User's Guide] → [Technical Support].

Mac OS

From the sidebar in Finder, select [Applications] → [ABBYY FineReader for ScanSnap] → [ABBYY FineReader for ScanSnap] → [Help] → [ABBYY FineReader for ScanSnap Help] → [Technical Support].

● Evernote

For inquiries regarding Evernote, refer to the following web page:

<http://www.evernote.com/about/contact/support/>

● Google Docs™

For inquiries regarding Google Docs™, refer to the Docs Help or the Help forum by clicking on the Help link in Google Docs™.

● Salesforce

Contact your Salesforce system administrator.

● SugarSync

For inquiries regarding SugarSync, refer to the following web page:

<https://support.sugarsync.com/>

● Dropbox

For inquiries regarding Dropbox, refer to the following web page:

<http://www.dropbox.com/contact>

- ScanSnap

For other inquiries regarding the ScanSnap, refer to the following web page:

<http://scansnap.fujitsu.com/g-support/en/>

If the solution to your problem cannot be found on the above web page, refer to the contact information for your Fujitsu office on the following web page:

<http://imagescanner.fujitsu.com/warranty.html>

Contact for Purchasing Consumables or Cleaning Materials

<http://scansnap.fujitsu.com/>

Notice

- Copying of the contents of this document in whole or in part and copying of the scanner application is prohibited under the copyright law.
- The contents of this document are subject to change without notice.