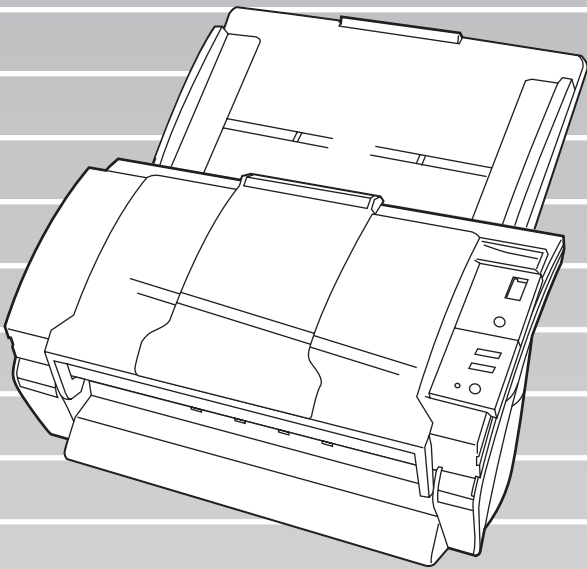




P3PC-E567-01EN

fi-4530C Image Scanner

Getting Started



CONTENTS

| | |
|--|-------------|
| ■ Regulatory Information | ii |
| ■ Note, Liability | iv |
| ■ Safety Precautions | v |
| Chapter1 PREPARING THE SCANNER..... | 1 |
| 1.1 Checking the Contents of the Scanner Package..... | 1 |
| 1.2 Names of Parts | 1 |
| 1.3 Operator panel..... | 1 |
| Chapter2 INSTALLATION OF THE SCANNER..... | 3 |
| 2.1 Installing the Scanner | 3 |
| 2.2 Connecting the Scanner to Your PC..... | 3 |
| Connecting the USB Interface Cable..... | 3 |
| Connecting the SCSI Interface Cable..... | 4 |
| Setting the SCSI ID..... | 4 |
| 2.3 Installing the Scanner Application | 5 |
| Installing the FUJITSU TWAIN32 Scanner Driver | 5 |
| Installing ScandAll 21 | 7 |
| Installing the FUJITSU ISIS Scanner Driver | 9 |
| Installing QuickScan™ Pro | 10 |
| Installing Error Recovery Guidance | 12 |
| Installing Image Processing Software Option (Trial)..... | 13 |
| Installing Adobe Acrobat..... | 13 |
| Appendix1 TROUBLESHOOTING..... | AP-1 |
| Appendix2 DAILY CARE | AP-4 |
| Appendix3 REPLACING CONSUMABLES..... | AP-5 |

INTRODUCTION

Thank you for purchasing the fi-4530C Duplex Color Scanner product.

This document describes how to handle fi-4530C Duplex Color and basic operation methods. Before you start using fi4530C Duplex Color be sure to thoroughly read this manual to ensure correct use.

The "Operator's Guide" is stored on the Setup Disk. The guide provides useful and detailed information on Operations when you would like to use advanced features, Daily Care for maintenance of the scanner, Replacing Consumables to maintain conditions for smooth scanning. Please also read the Operator's Guide for your reference.

■ Regulatory Information

FCC declaration

This equipment has been tested and found to comply with the limits for a Class B digital device, pursuant to Part 15 of the FCC Rules. These limits are designed to provide reasonable protection against harmful interference in a residential installation. This equipment generates, uses, and can radiate radio frequency energy and, if not installed and used in accordance with the instruction manual, may cause harmful interference to radio communications. However, there is no guarantee that interference will not occur in a particular installation. If this equipment does cause harmful interference to radio or television reception, which can be determined by turning the equipment off and on, the user is encouraged to try to correct the interference by one or more of the following measures:

- Reorient or relocate the receiving antenna.
- Increase the separation between the equipment and receiver.
- Connect the equipment into an outlet on a circuit different from that to which the receiver is located.
- Consult your dealer or an experienced radio/TV technician.

FCC warning: Changes or modifications not expressly approved by the party responsible for compliance could void the user's authority to operate the equipment.



Changes or modifications not expressly approved by the party responsible for compliance could void the user's authority to operate the equipment.

NOTICE The use of a shielded interface cable is required to comply with the Class B limits of Part 15 of FCC rules. The length of the AC cable must be 3 meters (10 feet) or less.

Canadian DOC Regulations

This digital apparatus does not exceed the Class B limit for radio noise emissions from digital apparatus set out in the Radio interference Regulations of the Canadian Department of Communications.

This Class B digital apparatus complies with Canadian ICES-003.

Le présent appareil numérique n'émet pas de bruits radioélectriques dépassant les limites applicables aux appareils numériques de la classe B prescrites dans le Règlement sur le brouillage radioélectrique dicté par le ministère des Communications du Canada.

Cet appareil numérique de la classe B est conforme à la norme NMB-003 du Canada.

Bescheinigung des Herstellers / Importeurs

Hiermit wird bescheinigt, daß *der/die/das*

fi-4530C


- In Übereinstimmung mit den Bestimmungen der EN45014(CE) funktentstört ist.
- Laut Maschinenlärminformationsverordnung 3. GS GV, 18.01.1991: Der höchste Schalldruckpegel beträgt 70 dB (A) oder weniger gemäß ISO/7779.

International ENERGY STAR® Program

As an ENERGY STAR® Partner, PFU LIMITED has determined that this product meets the ENERGY STAR® guidelines for energy efficiency.



The International ENERGY STAR® Office Equipment Program is an international program that promotes energy saving through the penetration of energy efficient computers and other office equipment. The program backs the development and dissemination of products with functions that effectively reduce energy consumption. It is an open system in which business proprietors can participate voluntarily. The targeted products are office equipment such as computers, monitors, printers, facsimiles, copiers, scanners, and multifunction devices.

Their standards and logos () are uniform among participating nations.

Use in High-safety Applications

This product has been designed and manufactured on the assumption that it will be used in office, personal, domestic, regular industrial, and general-purpose applications. It has not been designed and manufactured for use in applications (simply called "high-safety applications" from here on) that directly involve danger to life and health when a high degree of safety is required, for example, in the control of nuclear reactions at nuclear power facilities, automatic flight control of aircraft, air traffic control, operation control in mass-transport systems, medical equipment for sustaining life, and missile firing control in weapons systems, and when provisionally the safety in question is not ensured. The user should use this product with adopting measures for ensuring safety in such high-safety applications. PFU LIMITED assumes no liability whatsoever for damages arising from use of this product by the user in high-safety applications, and for any claims or compensation for damages by the user or a third party.

About the use of mercury

The scanner lamp contains mercury. To avoid unexpected injury, read the following carefully. Doing the following actions may result in serious personal injuries:

- Do not put the substance in the lamp in your mouth as it contains mercury.
 - Do not incinerate, crush, or shred the scanner.
 - Do not breathe the chemical liquid contained in the scanner parts.
- Disposing of the scanner should be conducted as required by local ordinances or regulations.

Trademarks

Microsoft, Windows, and Windows NT are registered trademarks of Microsoft Corporation in the United States and/or other countries. ISIS, QuickScan and their respective logos are trademarks or registered trademarks of Pixel Translations, a division of Captiva Software Corporation in the United States. Adobe, the Adobe logo, and Acrobat are either registered trademarks of Adobe Systems Incorporated in the United States and/or other countries. Other product names are the trademarks or registered trademarks of the respective companies.

How Trademarks Are Indicated In This Manual

References to operating systems (OS) are indicated as follows:

| | |
|---------------|--|
| Windows 95 | Microsoft® Windows® 95 operating system |
| Windows 98 | Microsoft® Windows® 98 operating system. |
| Windows Me | Microsoft® Windows® Millennium Edition operating system. |
| WindowsNT 4.0 | Microsoft® Windows® NT 4.0 Server operating system, Microsoft® Windows® NT 4.0 Workstation operating system. |
| Windows 2000 | Microsoft® Windows® 2000 Professional operating system. |
| Windows XP | Microsoft® Windows® XP Professional operating system, Microsoft® Windows® XP Home Edition operating system. |

Where there is no distinction between the different versions of the above operating system, the general term "Windows " is used.

Manufacturer

PFU LIMITED

Image Products Sales Dept., Imaging Products
Division, Products Group
Solid Square East Tower, 580 Horikawa-cho,
Saiwai-ku, Kawasaki-shi Kanagawa 212-8563,
Japan
Phone : (81-44) 540-4538

All Rights Reserved, Copyright© PFU LIMITED 2003

■ Note, Liability

READ ALL OF THIS MANUAL CAREFULLY BEFORE USING THIS PRODUCT. IF THIS PRODUCT IS NOT USED CORRECTLY, UNEXPECTED INJURY MAY BE CAUSED TO USERS OR BYSTANDERS.

Also, store this manual in a safe place so that it can be easily referred to during use of this product.

While all efforts have been made to ensure the accuracy of all information in this manual, PFU assumes no liability to any party for any damage caused by errors or omissions or by statements of any kind in this manual, its updates or supplements, whether such errors are omissions or statements resulting from negligence, accidents, or any other cause. PFU further assumes no liability arising from the application or use of any product or system described herein; nor any liability for incidental or consequential damages arising from the use of this manual. PFU disclaims all warranties regarding the information contained herein, whether expressed, implied, or statutory.

Warning Indications Used In This Manual

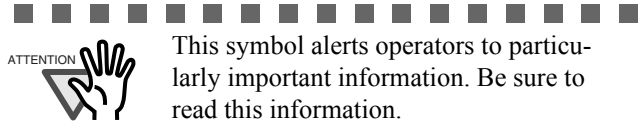


This indication alerts operators to an operation that, if not strictly observed, may result in severe injury or death.

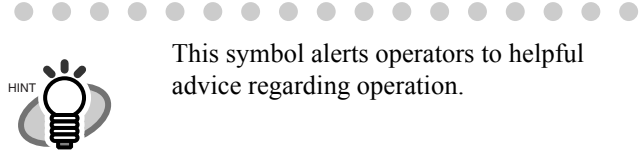


This indication alerts operators to an operation that, if not strictly observed, may result in safety hazards to personnel or damage to equipment.

Symbols Used In This Manual



This symbol alerts operators to particularly important information. Be sure to read this information.



This symbol alerts operators to helpful advice regarding operation.



A TRIANGLE symbol indicates that special care and attention is required.

The drawing inside the triangle shows the specific caution.



A CIRCLE with a diagonal line inside shows action which users may not perform. The drawing inside or under the circle shows the specific action that is not allowed.



Outline characters on a colored background show instructions users should follow.

It may also include the drawing that shows the specific instruction.

Screen Examples In This Manual

The screen examples in this manual are subject to change without notice in the interest of product improvement. If the actual displayed screen differs from the screen examples in this manual, operate by following the actual displayed screen while referring to the User's Manual of the scanner application you are using. Furthermore, the screenshots in this manual are for the FUJITSU TWAIN32 scanner driver, ScandAll 21 Image Capturing Utility Software, FUJITSU ISIS scanner driver, QuickScan™ image capturing software and Adobe® Acrobat®.

About Maintenance

The user must not perform repairs on this scanner. Contact the store where you purchased the scanner or an authorized FUJITSU Image Scanner service provider to make repairs to this product.

■ Safety Precautions



Do not damage the AC cable.



A damaged AC cable may cause fire or electric shock. Do not place heavy objects on AC cables, or pull, bend, twist, heat, damage or modify AC cables. Also, do not use damaged AC cables or power plugs, and AC cables or power plugs when the wall socket is loose.

Use only specified AC cables and connector cables



Use only specified AC cables and connector cables. Failure to use the correct cables might cause electric shock and equipment failure.

Use this scanner only at the indicated power voltage. Do not connect to multiple-power strips.



Use this scanner only at the indicated power voltage and current. Improper power voltage and current might cause fire or electric shock. Also, do not connect to multiple-power strips.

Do not touch the AC cable with wet hands.



Do not touch the power plug with wet hands. Doing so might cause electric shock.

Wipe any dust from the power plug.



Wipe off any dust from metal parts on the power plug or metal fittings with a soft, dry cloth. Accumulated dust might cause fire or electric shock.

Do not install the device in locations subject to oil smoke, steam, humidity, and dust.



Do not install the scanner in locations subject to oil smoke, steam, humidity, and dust. Doing so might cause a fire or electric shock.

Turn the scanner OFF if it is damaged.



If the scanner is damaged for any reason, turn off the scanner and unplug the power cable before contacting the store where you purchased the scanner.

Do not put liquids inside the scanner.



Do not insert or drop metal objects in to the scanner. Do not scan wet documents or documents with paper clips or staples. Do not splash or allow the scanner to get wet.



If foreign objects (water, small metal objects, liquids, etc.) get inside the scanner, immediately turn off the scanner and disconnect the power plug from the power outlet, then contact the store where you bought the scanner or the Maintenance Service Center. Pay particular attention to this warning in households where there are small children.

Do not touch the inside of the scanner unless necessary.



Do not take apart or modify the scanner. The inside of the scanner contains high-voltage components. Touching these components might cause fire or electric shock.

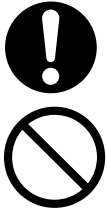
Do not use the scanner if you smell a strange odor.



If you detect heat coming from the device or detect other problems such as smoke, strange smells or noises, immediately turn off the scanner and then disconnect its power plug. Make sure that the smoking has stopped, and then contact the store where you bought the scanner or an authorized FUJITSU scanner service provider.



Do not install the scanner on unstable surfaces.



Install the scanner on a desk so that none of its parts protrude outside of the desktop. Also, make sure that the scanner is installed on a flat, level surface. Do not install the scanner on unstable surfaces. Install the scanner on a level surface that is free of vibration to prevent it from falling. Install the scanner on a strong surface that will support the weight of the scanner and other devices.

Do not block the ventilation ports.



Do not block the ventilation ports. Blocking the ventilation ports generates heat inside of scanner, which may result in fire or scanner failure.

Do not place heavy objects or climb on top of the scanner.



Do not place heavy objects on the scanner or use the scanner's top surface for performing other work. Improper installation might cause injuries.

Firmly insert the power plug.



Firmly insert the power plug into the power outlet as far it can go.

Avoid any contact when scanner is in use.



Avoid touching any scanner mechanism when scanning as this may cause injuries.

Do not use the scanner immediately after moving it from a cold place into a warm room.



Do not use the device immediately after moving it from a cold place into a warm room. This may cause condensation, which might lead to scanning errors. Let the device dry about one or two hours before you use it.

Before moving the scanner, disconnect the power plug from the power outlet.



Do not move the scanner with the power and interface cables connected as this might damage the cables, causing fire, electric shock or injuries. Before moving the scanner, be sure to disconnect the power plug from the power outlet, and disconnect data cables. Also, make sure that the floor is free of obstructions.

Protect the scanner from static electricity.



Install the scanner away from strong magnetic fields and other sources of electronic noise. Also, protect the scanner from static electricity as this might cause the scanner to malfunction.

Do not use aerosol sprays near the scanner.



Do not use aerosol sprays to clean the scanner. Aerosol sprays cause dirt and dust to enter the scanner, resulting scanner failure and malfunction.

Disconnect the power plug from the power outlet when the scanner is not used for a long period of time.



When the scanner is not used for a long period of time, be sure to disconnect the power plug from the power outlet for safety.

Do not install the scanner in the direct sunlight.



Do not install the scanner in the direct sunlight or near heating apparatus. Doing so might cause excessive heat to build up inside the scanner, causing fire or scanner trouble. Install the scanner in a well-ventilated location.

Chapter1 PREPARING THE SCANNER

1.1 Checking the Contents of the Scanner Package

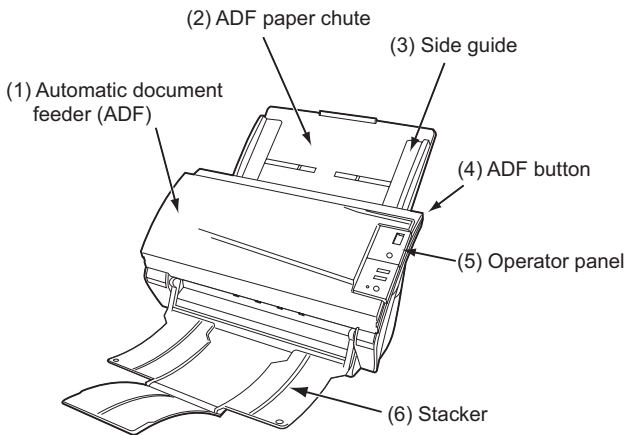
When you unpack the scanner package, make sure that the package contains all the parts on the list included in the package.

If any parts are missing or defective, contact your sales representative. Handle the scanner and accessories with care.

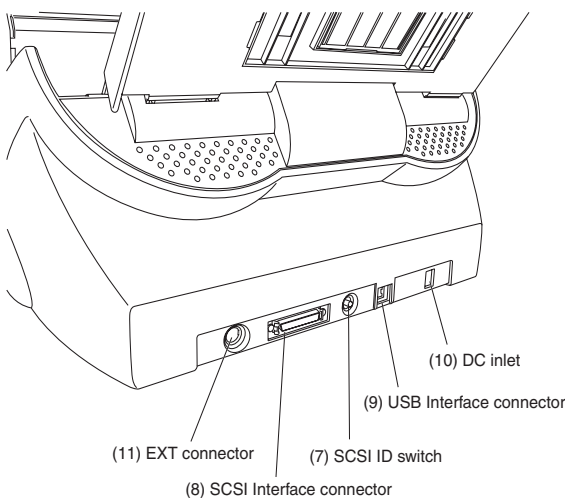
1.2 Names of Parts

This section describes the names of parts and their functions.

■ Front side

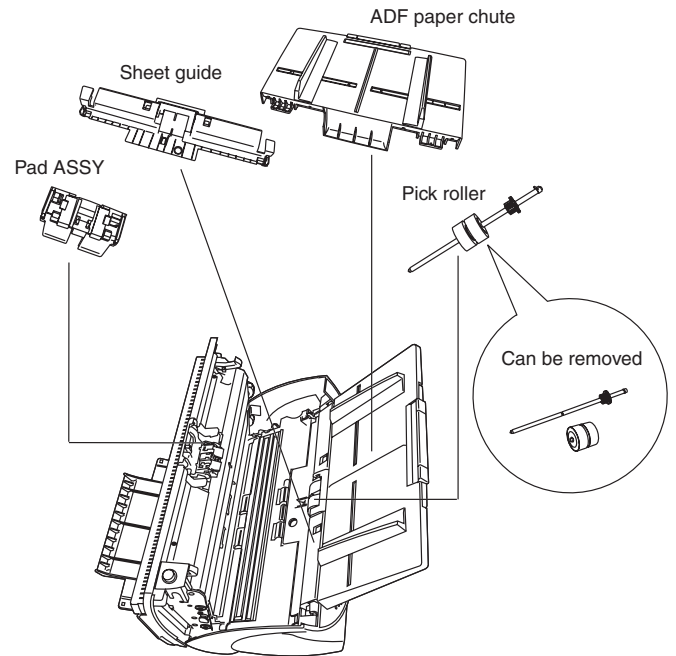


■ Rear side



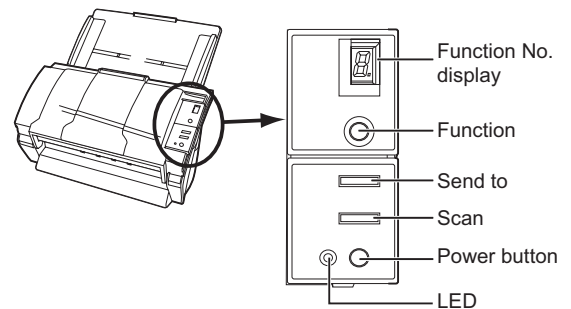
■ Removable Parts

The following shows the parts that can be removed from the scanner.



1.3 Operator panel

The operator panel is located on the right side of the scanner. The panel consists of a Function No. display, four buttons and a LED.



| Name | | Function |
|----------------------|--------------|---|
| Function No. display | | Indicates the function No. and error status. |
| Buttons | Function | Changes the Function activated by the Send to button (*). |
| | Send to | Launches the linked application software (*). |
| | Scan | |
| | Power button | Turns the scanner ON and OFF. |
| LED | - | Lights when the scanner is turned ON. |

*) About the settings on the launcher, refer to FUJITSU TWAIN32 scanner driver help and the "fi-4530C Operator's Guide" on the Setup CD-ROM.

■ Indications on the Function No. display

The following shows the indications on the Function No. display.

- 8
Blinks only one time upon turning on the scanner.
- P
Indicates that the scanner has been turned ON and is being initialized.
- 0
Indicates that initialization will soon be completed.
- 1
Indicates that initialization has been completed successfully.
This status is called "Ready Status".
- U
Indicates that a temporary error (that users can solve) has occurred during the initialization or scanning of documents.
"U" and an error number (1, 2, 6) are displayed alternately.
To return the scanner to the ready status ("1"), press the "Scan" or "Send to" button while the error is indicated.

- E
Indicates that a device alarm (that users can not solve) has occurred during the initialization or scanning of documents.
"E" and an alarm number (2 to 9, and A, c, d, F) are indicated alternately.
To return the scanner to the ready status ("1"), press "Scan" or "Send to" button while the alarm is indicated.
If this alarm occurs, turn the power off and then on again. If the alarm is indicated after turning on the power again, contact your service engineer.

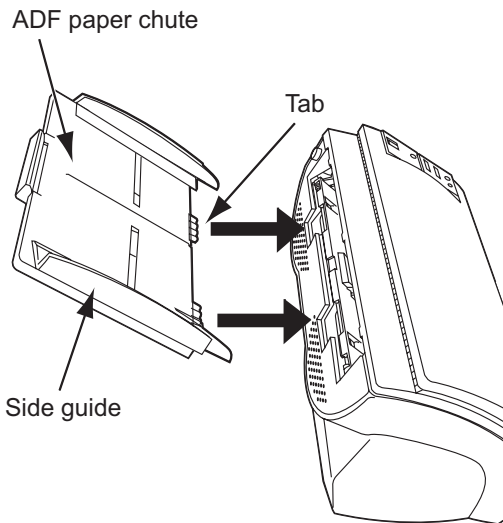
2.1 Installing the Scanner

1. Place the scanner at its installation site.

For details on the scanner's dimensions and required installation space, refer to "fi-4530C Operator's Guide" "7.2 Installation Specifications" on the Setup CD-ROM.

2. Attach the ADF paper chute.

Hold the ADF paper chute and insert its tabs into the holes on the rear side of the scanner as shown in the figure below so that the side guides face up.



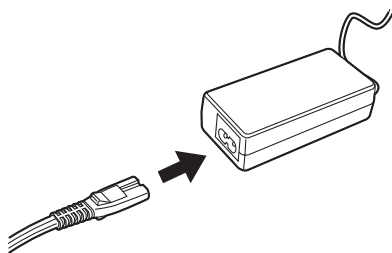
3. Connect the AC adapter.



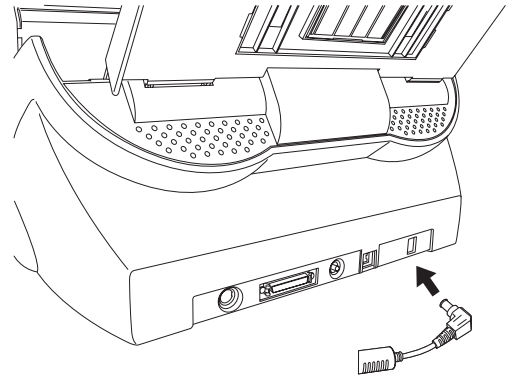
Use only the AC adapter provided by the manufacturer.



- 1) Connect the AC cable to the AC adapter.



- 2) Connect the connector of AC adapter to the DC inlet of the scanner.



- 3) Insert the AC cable into the power outlet.

2.2 Connecting the Scanner to Your PC

When running Windows 95 or Windows NT 4.0, connect the scanner to your PC by the SCSI cable. When running Windows 98, Windows Me, Windows 2000, or Windows XP, connect the scanner to your PC by either the USB interface cable or the SCSI cable.

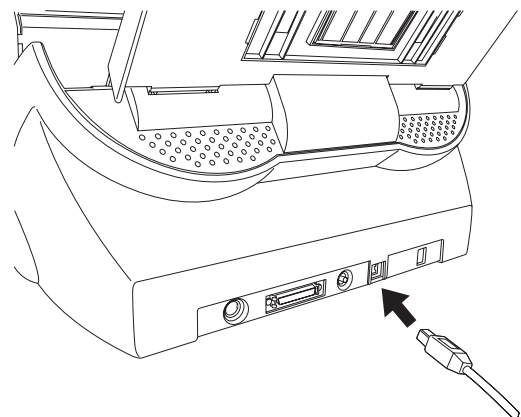


Do not connect both the USB interface cable and the SCSI cable at the same time. It is not possible to use the USB interface with Windows 95 and Windows NT 4.0.

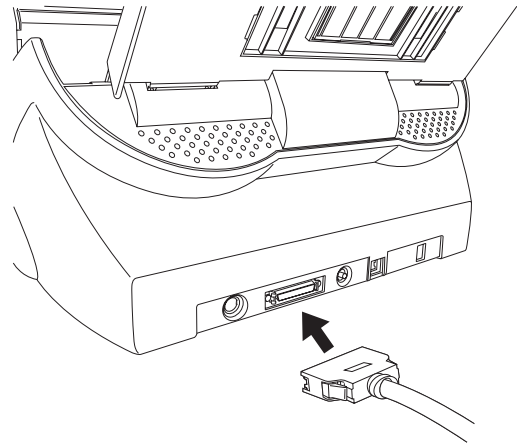


■ Connecting the USB Interface Cable

1. Connect the USB interface cable to the USB interface connector of the scanner.



2. Connect the other end of the USB interface cable to your PC.
3. Press down the power button on the operator panel to turn on the scanner.
4. Turn on your PC.



2. Connect the other end of the cable to your PC.



Use the USB interface cable provided as an accessory for the scanner. Operation with a commercially available USB cable is not guaranteed. When connecting to a USB hub, be sure to connect to the hub nearest your computer (first stage). If you connect it to a USB hub from the second stage onwards the scanner may not operate correctly. This device is equipped with SCSI and USB interfaces. The SCSI and the USB interfaces are controlled not to be used simultaneously. Do not connect both the USB interface cable and the SCSI cable at the same time.



■ Connecting the SCSI Interface Cable

When using the scanner with the SCSI interface, you need to purchase a commercially available SCSI cable and a SCSI card.

- SCSI cable
Use the cable that has connectors fit to the 50 Pin Contact Shielded High-Density SCSI Device Connector and to the connector of your SCSI card.
- SCSI card
Use the recommended SCSI card noted on the Web site below.

<http://imagescanner.fujitsu.com/>



When connecting the SCSI interface cable, be sure to first connect the SCSI interface cable then turn on the scanner and your PC. Connect the scanner so that it is the terminated device on the SCSI daisy chain.



1. Insert the SCSI cable into the interface connector.



When using the scanner with the SCSI interface, connect the scanner so that it is the terminated device on the SCSI daisy chain.



The factory default setting for SCSI ID is "ID 5". If the SCSI ID of another device has already been set to the same ID, change either the scanner's SCSI ID or that of the other device. For details on how to change the SCSI ID, refer to "Setting the SCSI ID" in this section.

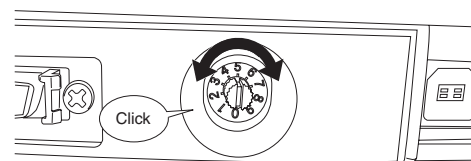


3. Push the power button to turn on the scanner.
4. Turn on the PC.

■ Setting the SCSI ID

The factory default setting for SCSI ID is "ID 5".

1. Press the power button at least for two seconds to turn OFF the scanner when it is ON. Disconnect the AC cable from the outlet.
2. Set the device address by using the SCSI ID switch on the back of the scanner.



| ID No. | Description |
|--------|---|
| 0 to 7 | Can be set as the ID |
| 8, 9 | Used for the factory default value (SCSI ID = 5). |

3. Press the power button to turn ON the scanner.

When the scanner is turned ON, the SCSI ID set at step 2 is enabled.

2.3 Installing the Scanner Application

For scanning documents with this scanner, both scanner driver and image capturing application software (called "application" hereafter) must be installed on your PC.


Two types of scanner driver (FUJITSU TWAIN 32 Scanner Driver or FUJITSU ISIS Scanner Driver) and application (ScandAll 21 and QuickScan Pro) are provided for this product. The following sections describe installation of each driver and application.

For FUJITSU TWAIN32 Scanner Driver


■ Preparation

Confirm the following items before starting to install the application.

- Prepare the Setup CD-ROM.
- Confirm that the scanner is correctly connected to your PC.

 For details on how to connect the scanner, refer to "2.2 Connecting the Scanner to Your PC" on page 3.

- Uninstall an older version of FUJITSU TWAIN 32 driver if it has already been installed.

 Uninstall [Scanner Utility for Microsoft Windows] from [Add/Remove Programs] on the control panel.

- There are two types of FUJITSU TWAIN 32: One of the following driver software will be automatically installed according to your Operating System (OS).

For Windows 98, Windows Me, Windows 2000, and Windows XP:


FUJITSU TWAIN32 V9

For Windows 95, Windows NT 4.0:


FUJITSU TWAIN32 V8


- When using Windows 95 or Windows NT 4.0: ASPI Manager V4.01 or later is required (generally comes with SCSI board products).

■ Installing the FUJITSU TWAIN32 Scanner Driver

 Windows XP screenshots are used in this section. The windows and operations may slightly vary depending on your OS.

1. Press the power button to turn ON the scanner.
2. Turn on your PC and log on to Windows.


 When using Windows NT 4.0, Windows 2000 or Windows XP, log on as a user with "Administrator" privileges (privileges of the administrator of your PC)

 The scanner may be detected automatically. If so, [Found New Hardware Wizard] (or [Add/Remove Hardware Wizard]) dialog box will appear. Click [Cancel] to close the Wizard window. Windows XP screenshots are used in this section. The windows and operations may slightly vary depending on your OS.

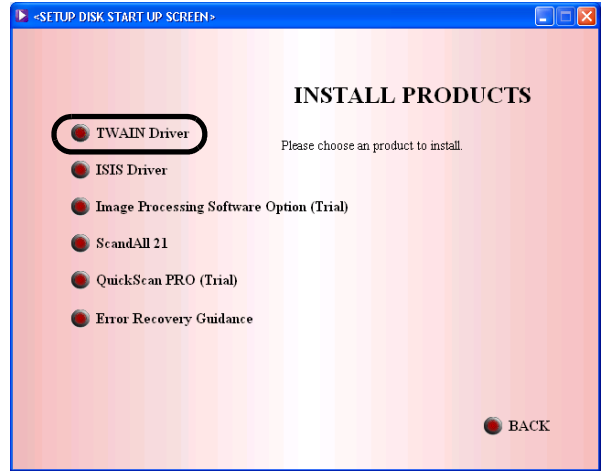
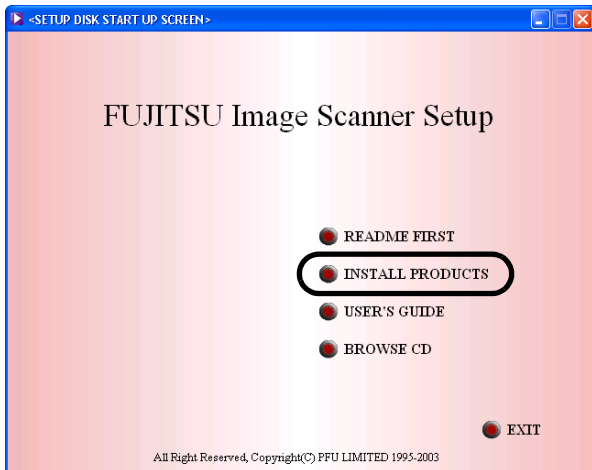
- Click [TWAIN Driver] on the window below.



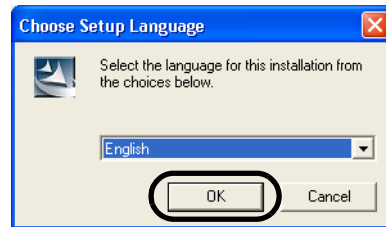
- Insert the Setup CD-ROM into the CD drive.
⇒ <SETUP DISK START UP SCREEN> appears.

ATTENTION  This screen may not appear when the "Autoplay" setting of your PC is OFF. In this case, run "Install.exe" in this CD-ROM directly by the "Explorer" or "My Computer".

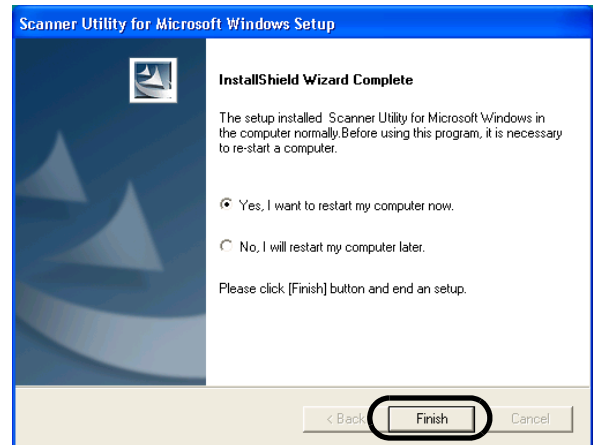
- Click [INSTALL PRODUCTS].



- Select a language used for installation on [Choose Setup Language] window and click [OK].



- Install the application following the instructions on the window.



- When the [InstallShield Wizard Complete] window appears, click [Finish].
- Your computer is restarted and the scanner will be detected. Do not remove the Setup CD-ROM from the CD drive until your PC will be completely restarted.



Depending on the OS, the following operations may be necessary.

For Windows 98:

When a request for inserting the CD-ROM of Windows 98 appears, insert it into the CD drive and click the [OK] button.

For Windows 2000:

When [Digital Signature not Found] appears, click [Yes].

For Windows XP:

1. When [Found New Hardware Wizard] appears, confirm that the Setup CD-ROM is set in the CD drive, then click the [Next] button.
2. When any alarm is displayed on [Hardware Installation] window, click the [Continue Anyway] button.
3. Click the [Finish] button.



Now the installation of the scanner driver is completed.



For confirming if the installation was successful, perform a scanning operation by using an application that complies with the TWAIN regulations such as ScandAll 21.



■ Installing ScandAll 21

"Scandall 21" is image capturing software that complies with the TWAIN standard. With the FUJITSU TWAIN 32 scanner driver, you can capture images by using a FUJITSU image scanner fi-series product.

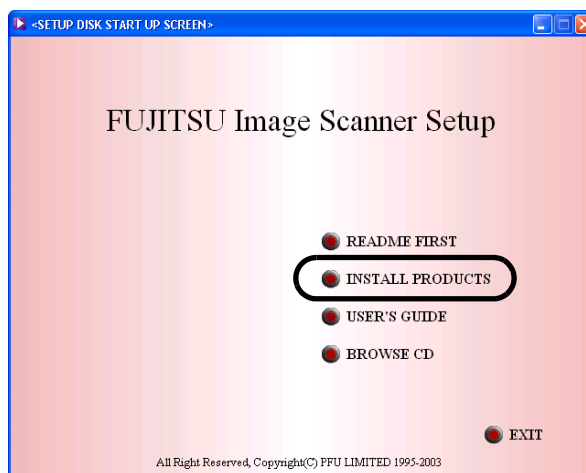


When using Windows NT 4.0, Windows 2000 or Windows XP, log on as a user with "Administrator" privileges (privileges of the administrator of your PC).

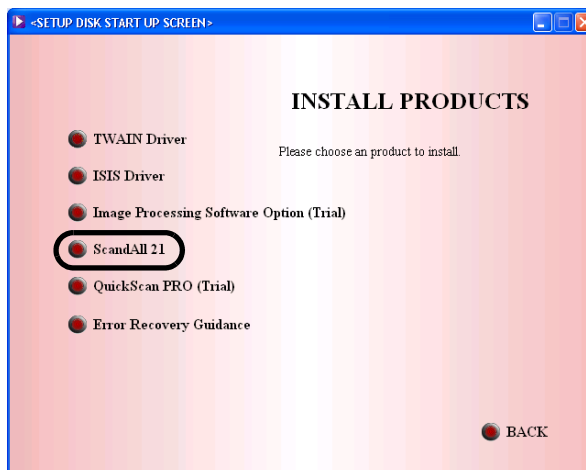


1. Insert the Setup CD-ROM into a CD drive.
⇒ <SETUP DISK START UP SCREEN> appears.

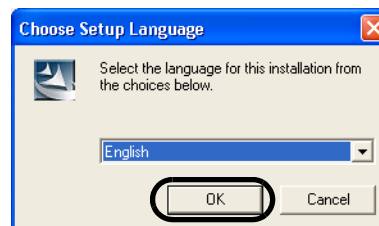
2. Click [INSTALL PRODUCTS].



3. Click [ScandAll 21] on the window below.

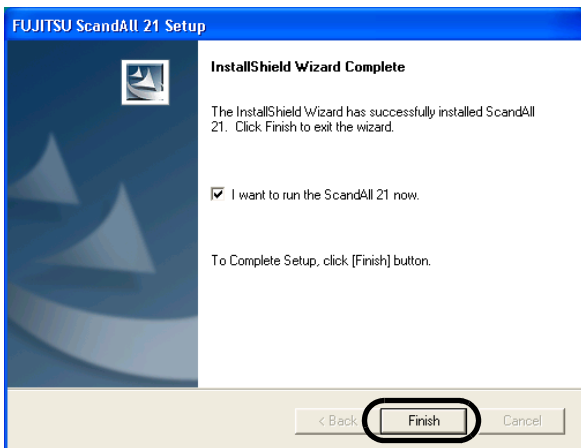


4. Select a language used for installation on [Choose Setup Language] window and click [OK].

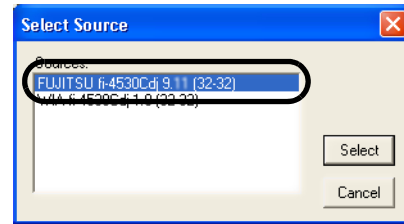


5. Install the application following the instructions on the window.

- When the [InstallShield Wizard Complete] window appears, click [Finish]



- Select "FUJITSU fi-4530Cdj" or "FUJITSU TWAIN32" on the dialog box appeared.



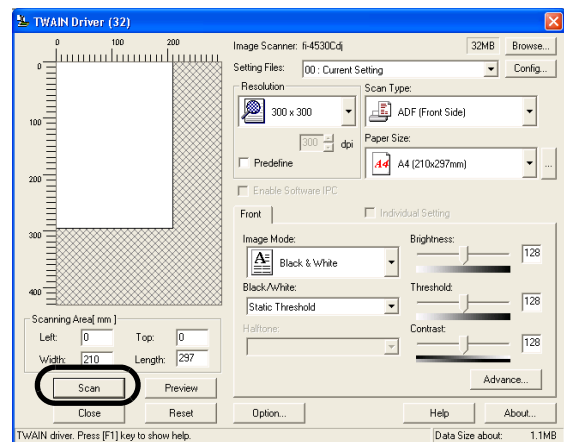
For Windows 98, Windows Me, Windows 2000, Windows XP:

[FUJITSU fi-4530Cdj]


For Windows 95, Windows NT 4.0:

[FUJITSU TWAIN32]

- Select [To View...] from the [Scan] menu.
- Set scanning resolution, document size, etc. on the [TWAIN driver] window (for setting details of scanning) and click the [Scan] button.

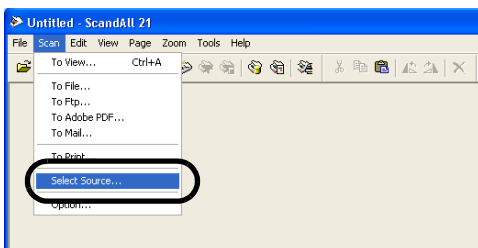


For details on [TWAIN driver], refer to the "FUJITSU TWAIN32 Scanner Driver Help" provided on the Setup CD-ROM

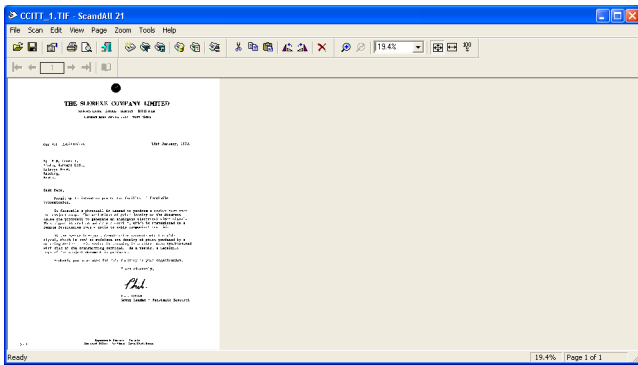
ATTENTION  For finishing the installation, it may be necessary restart to your computer. Follow the instructions on the window.

Confirming Installation

- Set documents on the ADF paper chute.
For details on how to set documents, refer to the "1.2 Loading Documents on the ADF for Scanning" in the fi-4530 Operator's Guide provided in the CD-ROM.
- Start ScandAll21
Select [Start] - [Programs] - [Scanner Utility for Microsoft Windows] - [ScandAll 21].
- Specify the scanner to use
Select [Select Source...] from the [Scan] menu of ScandAll 21.



- Documents are scanned, and the scanned images are displayed on the [ScandAll 21] window.



If the scanning is completed without any troubles, the installation was performed successfully.

For details on various types of scanning, refer to the "fi-4530C Operator's Guide" on the Setup CD-ROM.

For FUJITSU ISIS Scanner Driver

■ Preparation

Confirm the following items before starting to install the application. Prepare the Setup CD-ROM. Confirm that the scanner is correctly connected to your PC.

HINT For details on how to connect the scanner, refer to "2.2 Connecting the Scanner to Your PC" on page 3.

■ Installing the FUJITSU ISIS Scanner Driver

HINT Windows XP screenshots are used in this section. The windows and operations may slightly vary depending on your OS.

- Turn on the scanner.

- Turn on your PC and log on to Windows.

ATTENTION When using Windows NT 4.0, Windows 2000 or Windows XP, log on as a user with "Administrator" privileges (privileges of the administrator of your PC).

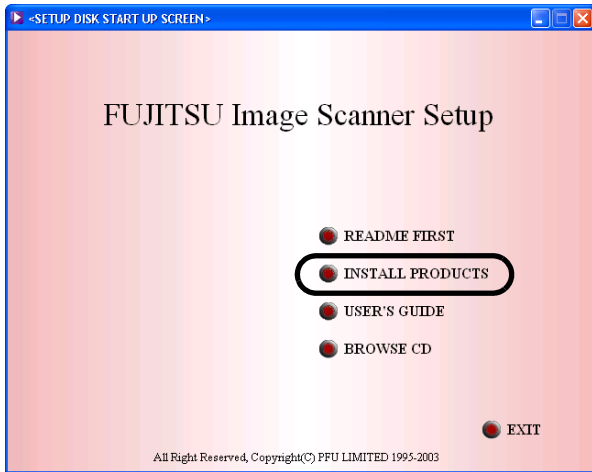
HINT The scanner may be detected automatically. If so, [Found New Hardware Wizard] (or [Add/Remove Hardware Wizard]) will appear. Click [Cancel] to close the Wizard window. The window may slightly vary depending on your OS. The window below is a screenshot for Windows XP.



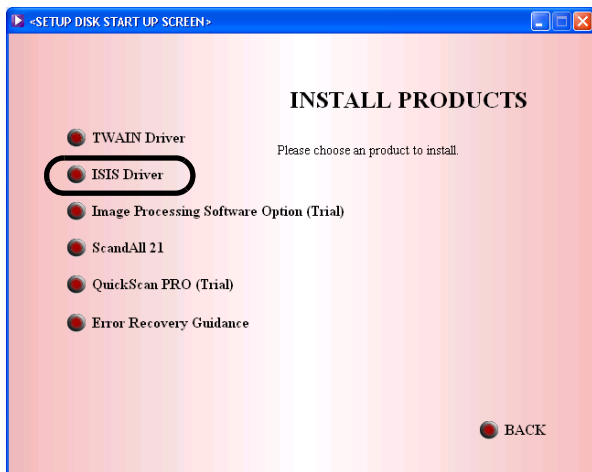
- Insert the "Setup CD-ROM" into the CD drive.
 - ⇒ <SETUP DISK START UP SCREEN> appears.

ATTENTION This screen may not appear when the "Autoplay" setting of your PC is OFF. In this case, run "Install.exe" in this CD-ROM directly by the "Explorer" or "My Computer".

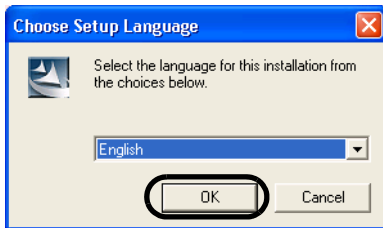
- Click [INSTALL PRODUCTS].



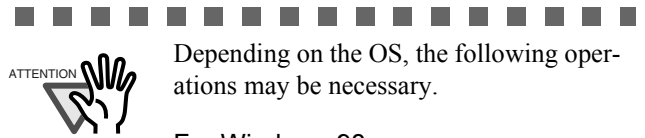
- Click [ISIS Driver] on the window below.



- Select a language used for installation on [Choose Setup Language] window and click [OK].



- Install the application following the instructions on the window.
- When the [InstallShield Wizard Complete] window appears, click [Finish].
- Your computer is restarted and the scanner will be detected. Do not remove the Setup CD-ROM from the CD drive until your PC will be completely restarted.



Depending on the OS, the following operations may be necessary.

For Windows 98:

When a request for inserting the CD-ROM of Windows 98 appears, insert it into the CD drive and click the [OK] button.

For Windows 2000:

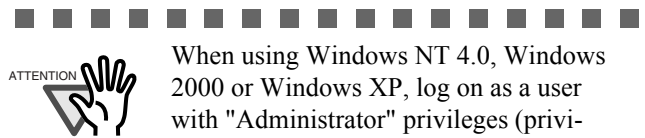
When [Digital Signature not Found] appears, click [Yes].

For Windows XP:

- When [Found New Hardware Wizard] appears, confirm that the Setup CD-ROM is set in the CD drive, then click the [Next] button..
- When any alarm is displayed on [Hardware Installation] window, click the [Continue Anyway] button.
- Click the [Finish] button when the installation is finished.

■ Installing QuickScan™ Pro

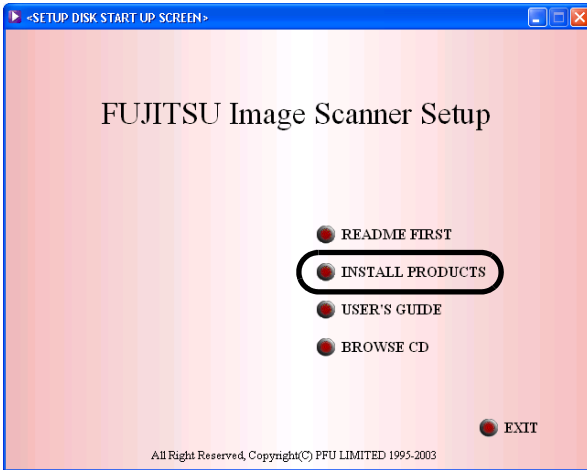
"QuickScan Pro" is image capturing software that complies with the ISIS standard. With the FUJITSU ISIS scanner driver, you can capture images by using a FUJITSU image scanner fi-series product.



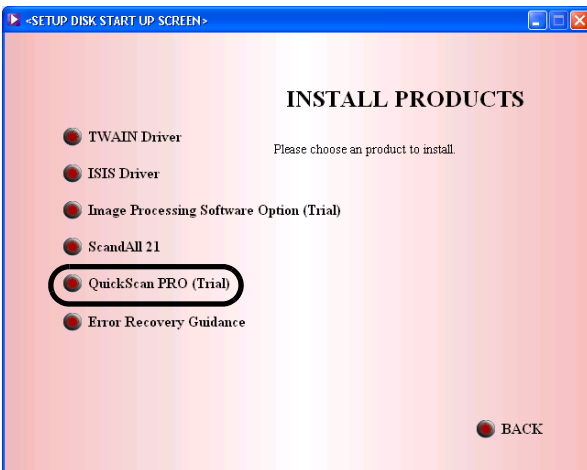
When using Windows NT 4.0, Windows 2000 or Windows XP, log on as a user with "Administrator" privileges (privileges of the administrator of your PC).

- Insert the Setup CD-ROM into a CD drive.
⇒ <SETUP DISK STARTUP SCREEN> appears.

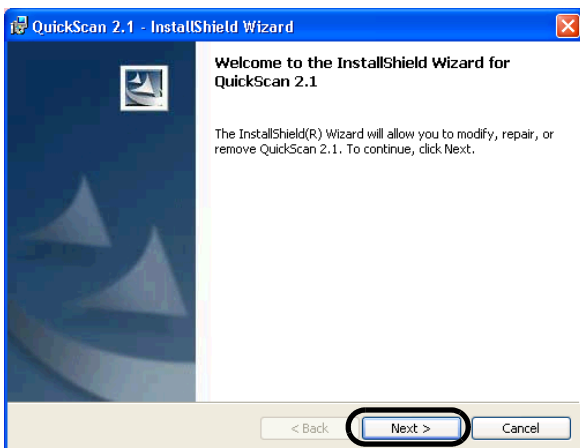
- Click [INSTALL PRODUCTS]



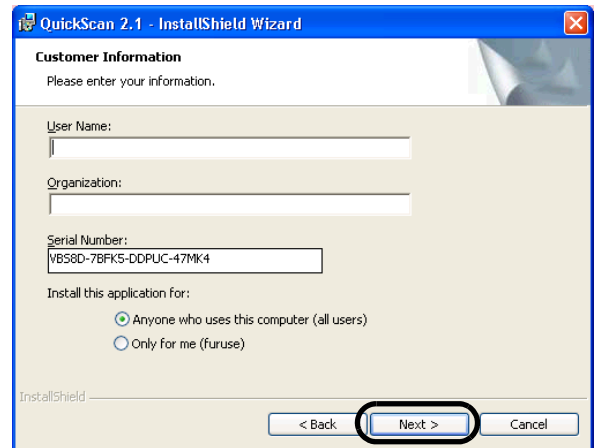
- Click [QuickScan PRO (Trial)] on the window below.



- Install the application following the instructions on the window.



- Enter required information, then click [Next >] button.



"QuickScan™ Pro" included in the Setup CD-ROM is an evaluation version. For further use after expiration of the evaluation period (up to 30 launches), it is necessary to purchase a fully functional version of QuickScan™ Pro. (When you install the evaluation version, do not change the Serial Number already displayed.)

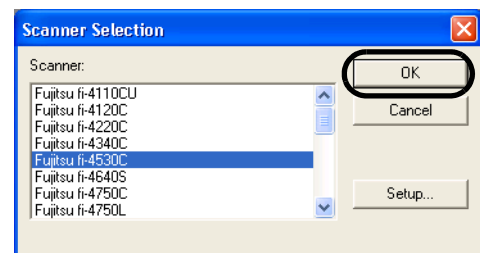


- Install the application following the instructions on the window.

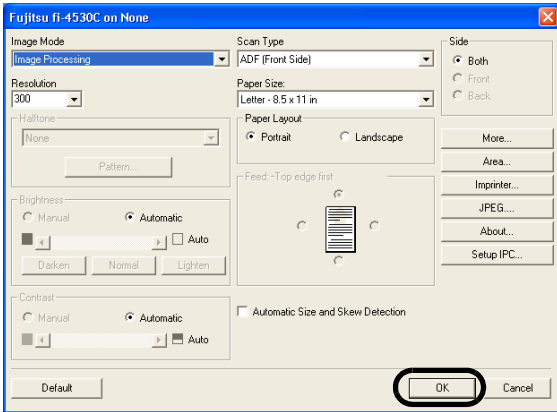
■ Confirming Installation

Confirm whether or not the scanner works normally as follows.

- Start QuickScan™ Pro.
From [Start] menu select [Programs]-[QuickScan]-[QuickScan].
- Select [Select Scanner...] from [Scan] menu in QuickScan™ Pro.
And select fi-4530C from the list of [Scanner:], and then click [OK] button.



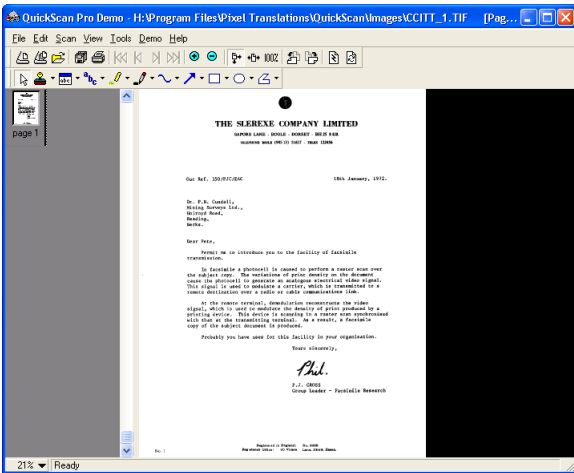
3. Select [Preview Settings...] from the [Scan] menu. Set the scan resolution, paper size and other scanning conditions, and then click [OK].



4. Load the documents on the scanner.

For details on loading documents, refer to "1.2 Loading Documents on the ADF for Scanning" in the fi-4530C Operator's Guide on the Setup CD-ROM.

5. Select [Preview Scan] from the [Scan] menu. And then the document is scanned.



If the scanning is completed without any troubles the installation was performed successfully.



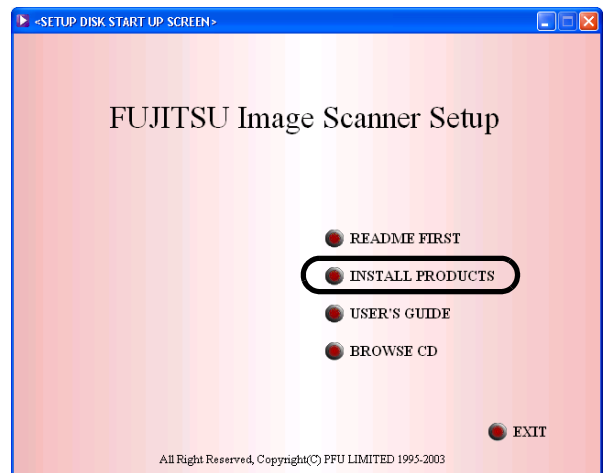
Refer to "QuickScan Overview" or "QuickScan Help" for information about QuickScan functions and operations. On the [Start] menu, point to [Programs]-[QuickScan] and click the file.

Error Recovery Guidance

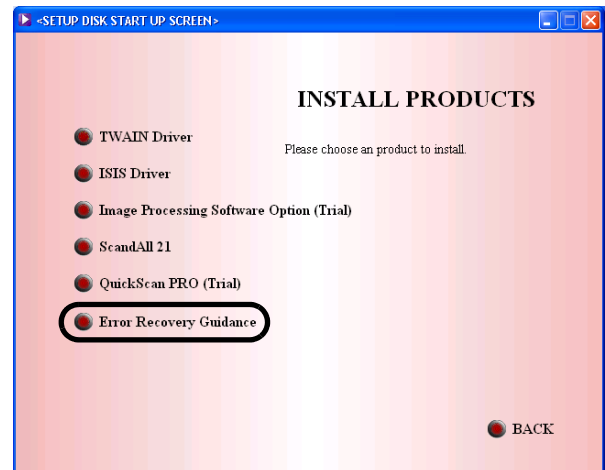
■ Installing Error Recovery Guidance

When any error occurs in the scanner, this Guidance automatically displays the solutions for troubleshooting on its window.

1. Insert the Setup CD-ROM into the CD drive.
⇒ <SETUP DISK STARTUP SCREEN> appears.
2. Click [INSTALL PRODUCTS].



3. Click [Error Recovery Guidance] on the window below.



- Select a language used for installation on [Choose Setup Language] window and click [OK].



- Install the application following the instructions on the window.
- When the [InstallShield Wizard Complete] window appears, click [Finish].

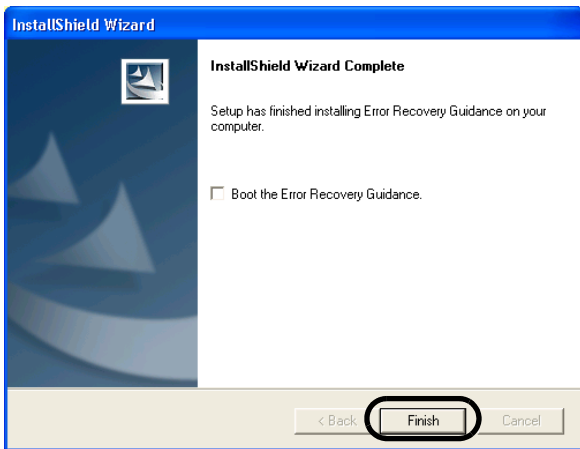


Image Processing Software Option (Trial)

■ Installing Image Processing Software Option (Trial)

For details on the installation of the Image Processing Software Option, refer to the "Image Processing Software Option USER'S GUIDE".

Adobe® Acrobat®

■ Installing Adobe Acrobat

Install Adobe Acrobat by the following procedure from the "Adobe Acrobat 5.0 CD-ROM" provided with the scanner.



Adobe Acrobat is required for displaying the manuals stored on the Setup CD-ROM. It is also possible to set Adobe Acrobat to display scanned images working together with the scanner.
*Installation of Adobe Acrobat is not necessary if it is already installed on your PC.



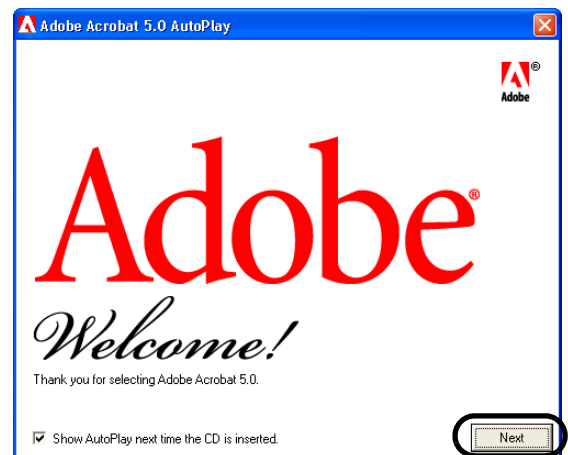
- Insert the Adobe Acrobat 5.0 CD-ROM into the CD-ROM drive.
⇒ The CD-ROM is automatically recognized, and the "Adobe Acrobat 5.0 AutoPlay" screen is displayed.



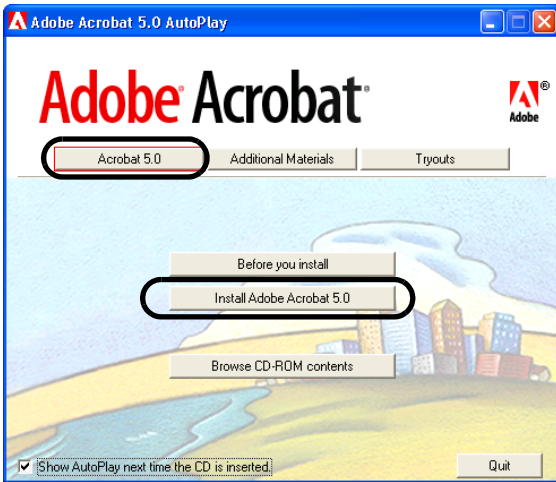
If the "Adobe Acrobat 5.0 AutoPlay" screen is not displayed even after the Adobe Acrobat 5.0 CD-ROM is inserted into the CD-ROM drive, double-click the "AutoPlay.exe" icon at the CD-ROM drive in Explorer.



- The following window appears. Click the [Next] button.



- The following window appears. Click the [Acrobat 5.0] button, then click the [Install Adobe Acrobat 5.0] button shown below.



⇒ The Setup window appears and the installation will be started.

- The setup window appears. Install Adobe Acrobat following the instructions on the window.



For details on installation of Adobe Acrobat 5.0, read the description that is displayed by clicking the [Before you install] button in the screen at Operation 3. For details on how to use Adobe Acrobat 5.0, refer to "Adobe Acrobat 5.0 Help."



Appendix1 TROUBLESHOOTING

■ Troubleshooting checklist

| Symptom | Check this item | Remedy |
|---|---|---|
| Scanner does not turn on. | Have you pushed the power button? | Push the power button. |
| | Are the AC cable and AC adapter properly connected to the scanner? | Correctly connect the AC cable and the AC adapter. Disconnect the AC cable and the AC adapter from the scanner, then connect them again. If this does not restore the power supply, contact the store where you purchased the scanner or an authorized FUJITSU scanner service provider. |
| | Is Windows normally started up? | Push the power button again after completely starting up Windows. |
| Scanning does not start. | Are the documents loaded correctly on the ADF paper chute? | Load the document correctly on ADF paper chute. |
| | Is the ADF closed completely? | Close the ADF completely. |
| | Is the USB cable or SCSI cable properly connected? | Correctly connect the cable. (When a USB hub is used, check the hub's power supply.) |
| | (When using SCSI interface) Is SCSI ID set correctly? | Set SCSI ID correctly by SCSI ID switch on rear of scanner. |
| | Does the Function No. display indicates an alarm or an error? | When the Function No. display indicates an alarm or an error, refer to the "Chapter 5. TROUBLESHOOTING" in the fi-4530C Operator's Guide for removing the alarm or the error. |
| | Does the alarm state remain displayed even after the scanner has been turned off and back on again? | Turn off and on the power button. If this does not eliminate the alarm state, contact the store where you purchased the scanner or an authorized FUJITSU scanner service provider. |
| Vertical lines appear in the printed image. | Is the glass dirty? | Clean the glass following the instructions in Operator's Guide "3. Daily Care". |
| The printed scanned image shifts or is distorted. | Are the documents loaded correctly? | Load the documents correctly. |
| Quality of scanned image is unsatisfactory. | Are the glass or sheet guides (a white location) clean? | Clean dirty locations. |

| Symptom | Check this item | Remedy |
|--|---|---|
| Double-feed frequently occurs. | Do the documents qualify the "Document Quality" and the "Double-feed Detection Conditions" in the chapter 6 of the fi-4530C Operator's Guide? | Use the documents that qualify the "Document Quality" and the "Double-feed Detection Conditions" in the chapter 6 of the fi-4530C Operator's Guide. |
| | Are the documents set properly in the ADF paper chute? | Fan the documents before scanning. Correctly align the document stack and load them on the ADF paper chute. Refer to "2.1 Installing the Scanner" on page 3 for details. |
| | Is the document stack thicker than 10mm? | Reduce the number of sheets in the document sheet to 10 mm thickness or less. |
| | Is the Pad ASSY dirty? | Clean the Pad ASSY. Refer to Operator's Guide in "3.2. Cleaning the ADF". |
| | Is the Pad ASSY worn out? | Replace the Pad ASSY. Refer to Operator's Guide in "4.2. Replacing the Pad ASSY". |
| Paper is not fed (pick error occurs frequently, or document stops midway). | Do the documents qualify the "Document Quality" and the "Double-feed Detection Conditions" in the chapter 6 of the fi-4530C Operator's Guide? | Use the documents that qualify the "Document Quality" and the "Double-feed Detection Conditions" in the chapter 6 of the fi-4530C Operator's Guide. |
| | Is the Pick roller dirty? | Clean the Pick roller. Refer to Operator's Guide in "3.2. Cleaning the ADF". |
| | Is the Pick roller worn out? | Clean the Pick roller. Refer to Operator's Guide in "4.3. Replacing the Pick Roller". |
| | Is there any debris on the document feed path? | Remove any debris from the document feed path. |
| Are the scanned images elongated? | Are the Feed rollers dirty? | Clean the Feed rollers. Refer to Operator's Guide in "3.2. Cleaning the ADF". |
| | Have you adjusted the scan scale? | For Windows 98, Windows Me, Windows 2000, WindowsXP, select "Scanners and Cameras" in the control panel, then click the [Device Set] tab to adjust scale. For Windows 95, Windows NT 4.0, right click the Scanner Control Center in the task tray, select [Options] and adjust the scan scale. |
| Is there a shadow on the leading edge of the scanned image? | Are the Feed rollers dirty? | Clean the Feed rollers. Refer to Operator's Guide in "3.2. Cleaning the ADF". |
| | Adjust the offset. | For Windows 98, Windows Me, Windows 2000, WindowsXP, adjust the [Sub-scan Setting] on [Scanners and Cameras] in the control panel. For Windows 95, Windows NT 4.0, right click the Scanner Control Center, select [Options]-[Sub-scan Setting] and adjust the offset. |

■ Temporary error

| Indication | Meaning |
|------------|---------------------------------|
| U1 | A paper feed error occurred. |
| U2 | A double feed error occurred. |
| U6 | The print cartridge is not set. |

The following shows the procedure for releasing of each temporary error.

- "U1" error

Remove jammed documents.

Confirm that the documents meet the paper conditions for scanning.

Refer to fi-4530C Operator's Guide "6.2 Document Quality" on the Setup CD-ROM.

- "U2" error

Remove jammed documents.

Confirm that the documents meet the paper conditions for scanning.

Refer to fi-4530C Operator's Guide "6.2 Document Quality" on the Setup CD-ROM.

- "U6" error

This error may occur only when the Imprinter option is installed on your scanner.

Open the ink cover and confirm if the print cartridge is firmly attached.

■ Device alarm (Permanent error)

| Indication | Meaning |
|------------|--|
| E2 | A trouble in the optical system (front). |
| E3 | A trouble in the optical system (back). |
| E4 | The motor fuse has blown out. |
| E6 | A trouble in the operator panel. |
| E7 | A trouble occurred in the EEPROM. |
| E8 | The SCSI interface fuse has blown out. |
| E9 | An error in the image memory. |
| Ec | An alarm in the memory. |
| Ed | A trouble in the SCSI interface controller. |
| EF | A trouble in the Background switching mechanism. |

When you encounter any alarm, turn off and on the scanner. If the alarm is still displayed on the Function No. display, contact the store where you purchased the scanner or an authorized FUJITSU scanner service provider.

Appendix2 DAILY CARE



The glass of the inside of the ADF becomes hot during operation.



When you clean the inside of the scanner, turn off the power and unplug the AC adapter from the outlet and wait for at least three minutes.



Do not turn off the scanner when you clean the Feed rollers or Eject rollers.

■ Cleaning Materials

| Cleaning Materials | Parts No. | Remarks |
|-----------------------------------|------------------------------|---|
| Cleaner F1 (or isopropyl alcohol) | CA99501-0013 | 1 bottle Moisten a cloth with this fluid and wipe the scanner clean. |
| Lint-free dry cloth | - Commercially available one | |

For details about the cleaning materials, contact the FUJITSU scanner dealer where you purchased the scanner.

■ Cleaning Method

The ADF must be cleaned with a lint-free cloth moistened with the Cleaner F1.

■ Locations and Cycle for Cleaning

| Part to clean | Standard Cleaning Cycle |
|--------------------|--|
| Pad ASSY | Clean these parts after every 5,000 scans. |
| Pick roller | |
| Feed rollers | |
| Plastic rollers | |
| Eject rollers | |
| Sheet guides | |
| Glass | |
| Ultra sonic sensor | |



The scanner must be cleaned more frequently if you scan any of the following type of sheets:

- Documents of coated paper
- Documents that are almost completely covered with printed text or graphics
- Chemically treated documents such as carbonless paper
- Documents containing a large amount of calcium carbonate
- Handwritten documents

For details on the cleaning the ADF, refer to "3.2 cleaning the ADF" in fi-4530C Operator's Guide on the Setup CD-ROM".

Appendix3 REPLACING CONSUMABLES



The glass of the inside of the ADF becomes hot during operation.

When you clean the inside of the scanner, turn off the power and unplug the AC adapter from the outlet and wait for at least three minutes.



Do not turn off the scanner when you clean the Feed rollers or Eject rollers.

Consumables and Replacement Cycle

The following table shows the specifications of consumables and guidelines for the replacement cycle.

| Description | Parts No. | Standard Replacement Cycle |
|-------------|--------------|----------------------------------|
| Pad ASSY | PA03334-0002 | After 100,000 scans or one year |
| Pick roller | PA03334-0001 | After 200,000 sheets or one year |

For purchase of consumables, contact the store where you purchased the scanner or an authorized FUJITSU scanner service provider.

The replacement cycles above are rough guidelines for the case of using A4/Letter woodfree or wood containing paper 64 g/m² (17 lb). This cycle varies according to the type of the used paper and how frequently the scanner is used and cleaned.

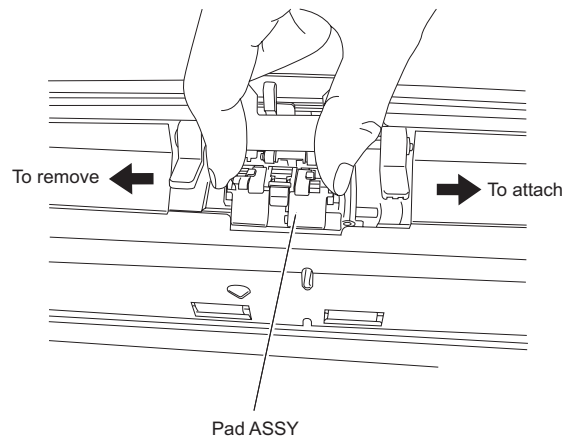


Use only the specified consumables.
Do not use other consumables.



Following illustration shows the locations of the parts to be replaced. Refer to "Chapter 4 Replacing Consumables" fi-4530C Operator's Guide on the Setup CD-ROM.

Replacing the Pad ASSY



Replacing the Pick Roller

