

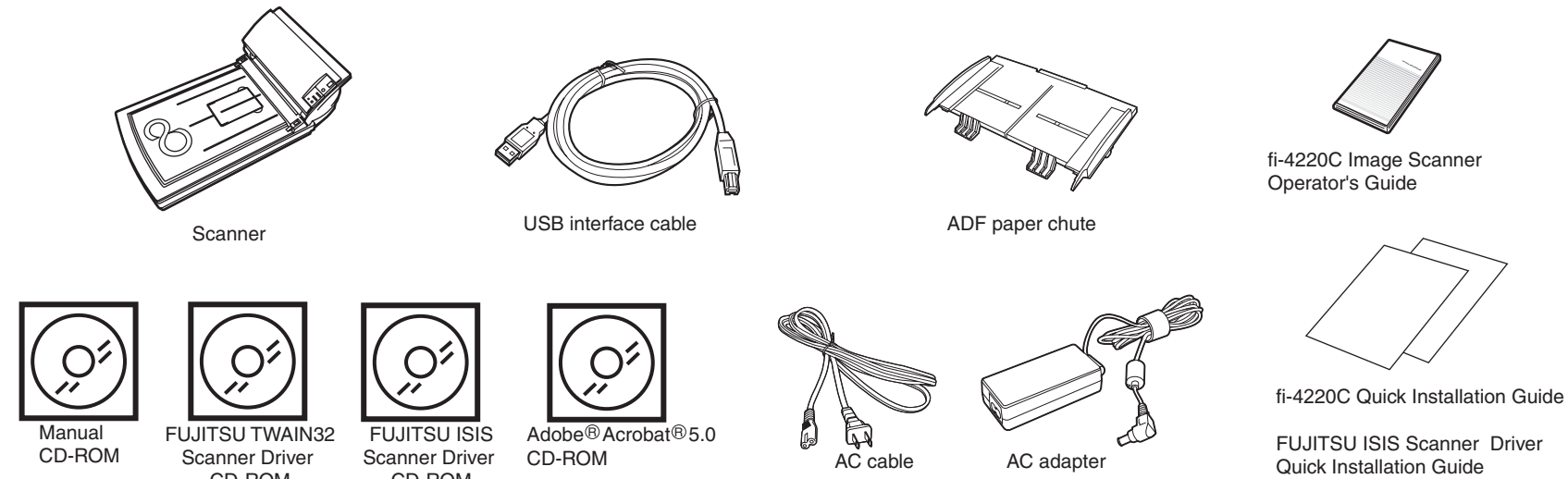
# fi-4220C Quick Installation Guide

Refer to the "fi-4220C Image Scanner Operator's Guide" when you would like to know more about the scanner.  
Refer to the "Scanner Utility for Microsoft® Windows® User's Guide" on the Scanner driver CD-ROM when you would like to know more detailed information about the FUJITSU TWAIN32 Scanner driver installation.

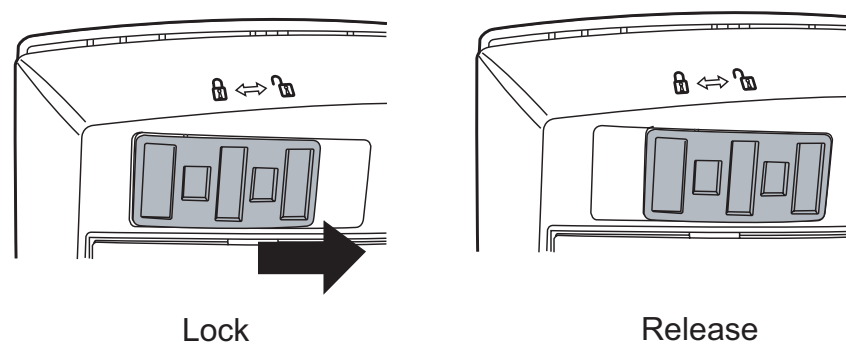
Carefully read the "fi-4220C Image Scanner Operator's Guide" before using this product.  
Particularly read and understand the "Safety Precautions" before using this product.

## 1 Check the scanner and accessories

Confirm that all of the following items are included.



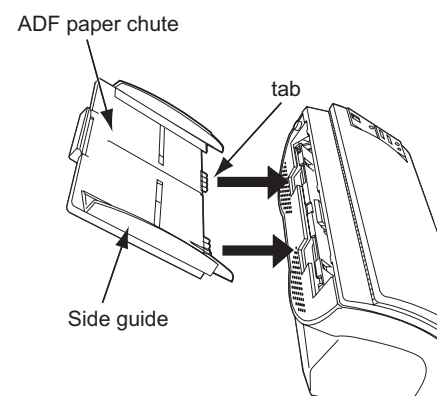
## 2 Release the Shipping Lock



Make sure to slide the shipping lock in place (located on the bottom of the scanner) to secure the internal carrier unit during transportation. After transporting and placing the scanner, tilt the scanner (approx. 30 degrees) and release the shipping lock. See the "fi-4220C Image Scanner Operator's Guide" for further details.

## 3 Attach the ADF paper chute

1. Holding the ADF paper chute, insert it so that the two tabs on the chute slot into the holes on the rear of the scanner. Attach the ADF paper chute so that the side with the side guides is face up.



## 4 Connect the USB interface cable, SCSI interface cable and the AC cable

**Caution** Confirm that the power of PC and the image scanner device is turned off.

1. Connect either the USB interface cable or the SCSI interface cable. When using **Windows® 95, Windows NT® 4.0**, connect the SCSI interface cable.

### Connecting the USB interface cable

- 1 Connect the PC end of the USB interface cable to the PC.
- 2 Connect the scanner end of the USB interface cable to the scanner.

### Connecting the SCSI interface cable

- 1 Connect the PC end of the SCSI interface cable to the PC.
- 2 Connect the scanner end of the SCSI interface cable to the scanner.
- 3 Check the SCSI ID switch.

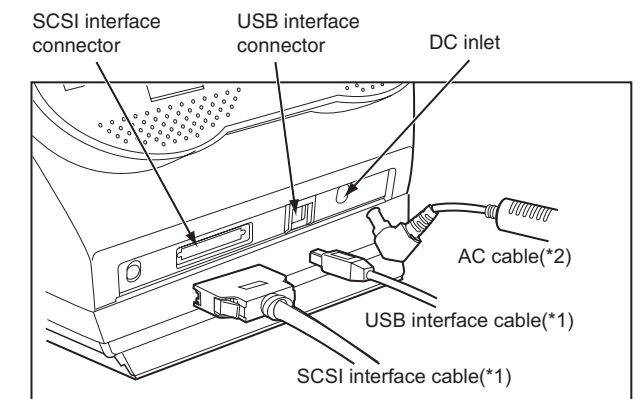
The SCSI ID switch is set to No. 5. If another device has the same ID then change the SCSI ID. Refer to the "fi-4220C Image Scanner Operator's Guide" for information about the procedure to change the SCSI ID.

**Caution**

- It is necessary to separately purchase a SCSI interface cable and a SCSI card which are available commercially. See "fi-4220C Image Scanner Operator's Guide" for details.
- Connect the scanner so that it is the terminator SCSI device.

2. Connect the AC adapter with the AC Cable, and then connect it to the DC inlet on the Scanner.

3. Insert the AC cable into the power outlet. Next, install the FUJITSU TWAIN32 Scanner driver.



\*1) Connect to your PC.  
\*2) Connect to the power outlet.

- When using **Windows® 98, Windows® Me, Windows® 2000** or **Windows® XP**, perform the procedure in step **5-a** to complete installation.
- When using **Windows® 95** or **Windows NT® 4.0**, perform the procedure in **5-b** to complete the installation.

## 5-a Install FUJITSU TWAIN32 Scanner driver

Windows® 98, Windows® Me, Windows® 2000, Windows® XP

**Caution**

Install the mini-driver first, and then the TWAIN data source. If the old version of FUJITSU TWAIN32 Scanner driver has been installed on your personal computer, refer to the "Scanner Utility for Microsoft® Windows® User's Guide" on the Scanner driver CD-ROM, and update the mini-driver.

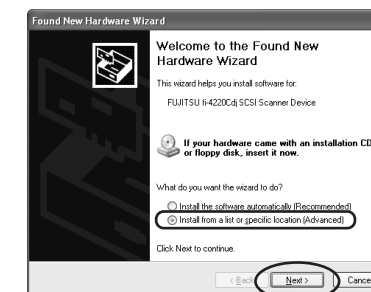
The Windows® XP screen samples are shown below. The screen and operations will differ slightly depending on the OS that is being used.

### Preparation

Confirm that the Scanner is connected to your personal computer with the USB interface cable or SCSI interface cable.

### Installing the mini-driver

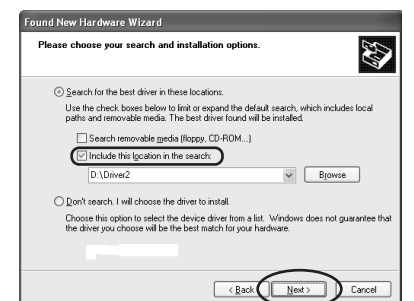
1. Turn on the power by pushing the power switch on the scanner's control panel. The green LED on the control panel lights. The Function No. display shows to the order "8", "P", "0", "1". When Function No. display reaches "1" the scanner is ready.
2. Turn on your personal computer and log on to Windows®. When using **Windows® 2000** or **Windows® XP** log on as an administrator. The "Found New Hardware Wizard" dialog box is displayed.
3. Check "Install from a list or specific location (Advanced)", then click [Next].



- For **Windows® Me**, check "Specify the location of the driver (Advance)", then click [Next].  
For **Windows® 2000** and **Windows® 98**, clicking on [Next] the select search method screen is displayed.
- For **Windows® 98**, select "Search for the best driver for your device. (Recommended)" then click [Next].
  - For **Windows® 2000**, select "Search for a suitable driver for my device (Recommended)" then click [Next].

4. Insert the Scanner driver CD-ROM

5. Select "Search for the best driver in these locations". Check "Include this location in the search:" then specify **D:\Driver2** (When your CD-ROM is the D drive). After that click [Next].



- For **Windows® 98**, just check "Specify a location:" then specify **D:\Driver2** (When your CD-ROM is the D drive). After that click [Next].  
For **Windows® Me**, select "Search for the best driver for your device." Check "Specify a location" then specify **D:\Driver2** (When your CD-ROM is the D drive). After that click [Next].  
For **Windows® 2000**, just check "Specify a location" and then in the next screen specify "Copy manufacturer's files from:" then specify **D:\Driver2** (When your CD-ROM is the D drive), then click [OK].

Continued on next page

Continued from previous page

6. For **Windows® XP**, the next screen is displayed, click [Continue Anyway] and complete the installation.



For **Windows® 2000**, the "Digital Signature Not Found" dialog is displayed, click [Yes].  
For other operating systems click [Next].

**Caution** For **Windows® 98** there is a request to insert a disc. When this happens, insert the **Windows® 98** CD-ROM.

7. Click [Finish].



8. Restart the system.  
After restarting the system install the TWAIN data source.

### ■ Installing TWAIN data source

When using **Windows® 2000** or **Windows® XP** log on as an administrator.

1. Insert the Scanner Driver CD-ROM, then use the explorer to double click on **D:\Driver2\Setup\install.exe** (when your CD-ROM is the D drive).

**Hint** When automatic start has been set, the setup disk start screen is displayed. Installation can be started from this screen also.

2. Follow the instruction on the screen to complete the installation. Make the best selection that suits your needs.

- Select the language you will use during installation.
- Check the installation directory. If you need to change the installation destination, click the [Browse...] button then specify the destination.
- Check the names of components that need to be installed in [Select Components]. Explanation of the component is displayed underneath it.

3. When installation is finished, confirm that the following folder has been created. The icons displayed differ depending on the setting in [Select Component] during installation.



Continue by installing Image Capturing Software Utilities "ScandAll 21" for Microsoft® Windows®.

## 6 Install Image Capturing Software Utilities "ScandAll 21" for Microsoft® Windows®

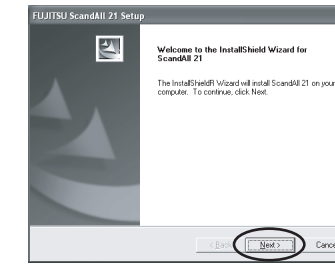
When using **Windows NT® 4.0**, **Windows® 2000** or **Windows® XP**, log on as an administrator.

1. Insert the Scanner driver CD-ROM, then use explorer to double click on ScandAll 21.exe in the ScandAll folder in the CD-ROM drive.

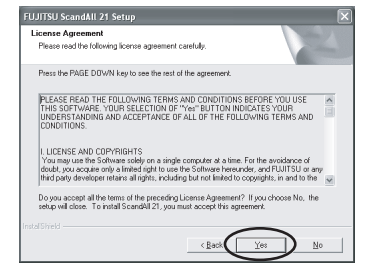
2. Select the language you use during installation in [Choose Setup Language] then click [OK]. This screen might not be displayed.



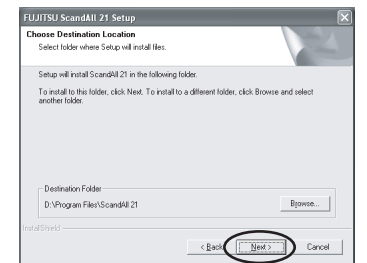
3. Click [Next] in the welcome screen.



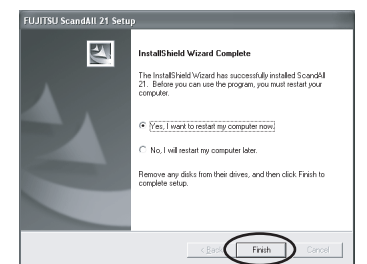
4. Carefully read the License Agreement then click [Yes], if you agree.



5. Confirm the name of the destination folder then click [Next].



6. Click [Finish].



## 5-b Install FUJITSU TWAIN32 Scanner driver

Windows® 95, Windows NT® 4.0

Refer to the "Scanner Utility for Microsoft® Windows® User's Guide" on the Scanner driver CD-ROM when you would like to know more detailed information about the FUJITSU TWAIN32 Scanner driver installation.

### ■ Preparation

1. Confirm that the SCSI adapter is attached to your personal computer.
2. Confirm that SCSI driver and ASPI manager are correctly integrated and operating.

**Caution** ASPI manager Version 4.01 or newer is required. Check the WNASPI32.DLL file version with explorer. Please refer to "Scanner Utility for Microsoft® Windows® User's Guide" for details.

3. If an older version is installed, uninstall it before doing the installation.

### ■ Installation

1. Turn on the power by pushing the power switch on the scanner's control panel.  
The green LED on the control panel lights. The Function No. display shows to the order "8", "P", "0", "1". When Function No. display reaches "1" the scanner is ready.
2. Turn on your personal computer and log on Windows®.  
When using **Windows NT® 4.0**, log on as an administrator.
3. Insert the Scanner driver CD-ROM, then use explorer to double click on **D:\Driver1\ASPI\install.exe** (when your CD-ROM is the D drive).

**Hint** When automatic start has been set, the setup disk start screen is displayed. Installation can be started from this screen also.

4. Follow the instruction on the screen.

5. When installation is finished, confirm that the following group ("Scanner Utility for Microsoft Windows" group) has been created.

Continue by installing Image Capturing Software Utilities "ScandAll 21" for Microsoft® Windows®.

## 7 Scanning documents

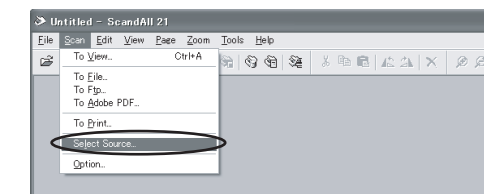
Confirm whether the scanner works normally, as follows.

1. Place a document on the ADF paper chute.  
For details on how to load documents, see "3 BASIC SCANNER OPERATIONS" in the "fi-4220C Image Scanner Operator's Guide"

**Caution** In case of Windows® 98, Windows® Me, Windows® 2000, and Windows® XP, when documents are set on the scanner, an application may start automatically or the window for selecting application may be displayed. If you want to change these setting, refer to "6.3 Event tab" of "Scanner Utility for Microsoft® Windows® User's Guide."

2. Start ScandAll 21.  
In the start menu select [Program] then [Scanner Utility for Microsoft Windows] then [ScandAll 21] in that order.

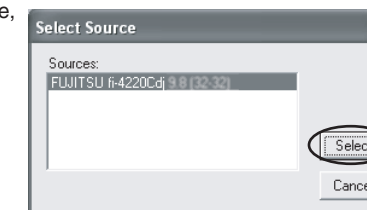
3. Specify the scanner you are using.  
Select [Select Source] from the [Scan] menu in ScandAll 21.



The following dialog is displayed.

- In case of Windows® 98, Windows® Me, Windows® 2000, and Windows® XP,  
Select "**FUJITSU fi-4220Cdj**".

- In case of Windows® 95, and Windows NT® 4.0,  
Select "**FUJITSU TWAIN32**".

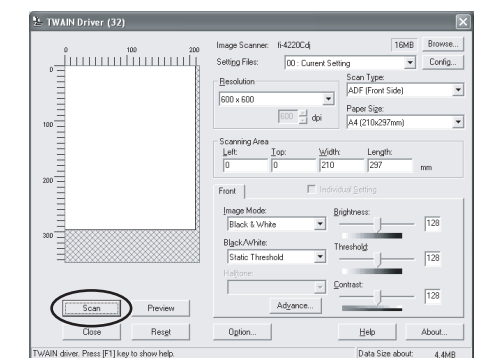


And then Click [Select].

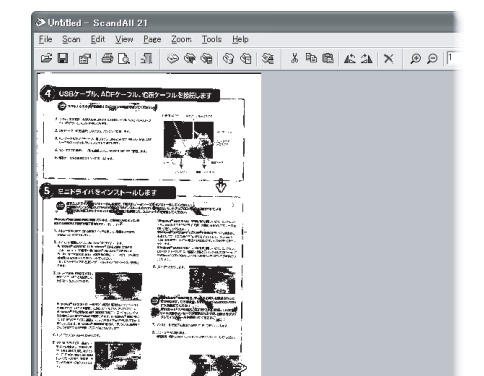
4. Click [Scan To View] in the toolbar.



5. In [TWAIN Driver] (Scan conditions setting screen) set the scan resolution, paper size and other scanning conditions, and click the [Scan] button.  
For details on settings in the [TWAIN Driver] dialog box, refer to the "Scanner Utility for Microsoft® Windows® User's Guide" on the Scanner driver CD-ROM.



The document is scanned and the image is displayed on the ScandAll 21 screen.



If the document can be scanned then setup has been successfully finished. For various scanning operations not mentioned here, see "4 SCANNING VARIOUS TYPES OF DOCUMENTS" in the "fi-4220C Image Scanner Operator's Guide". See "ScandAll 21 Help" for information about ScandAll 21 functions and operations.

**Installation end**

The screen images may be changed due to improvements without notice.

If the displayed screen images are slightly different from the screen images in "fi-4220C Quick Installation Guide" follow the actual screen display for installation. Please also refer to the software operation manual and do the installation according to the actual screens.